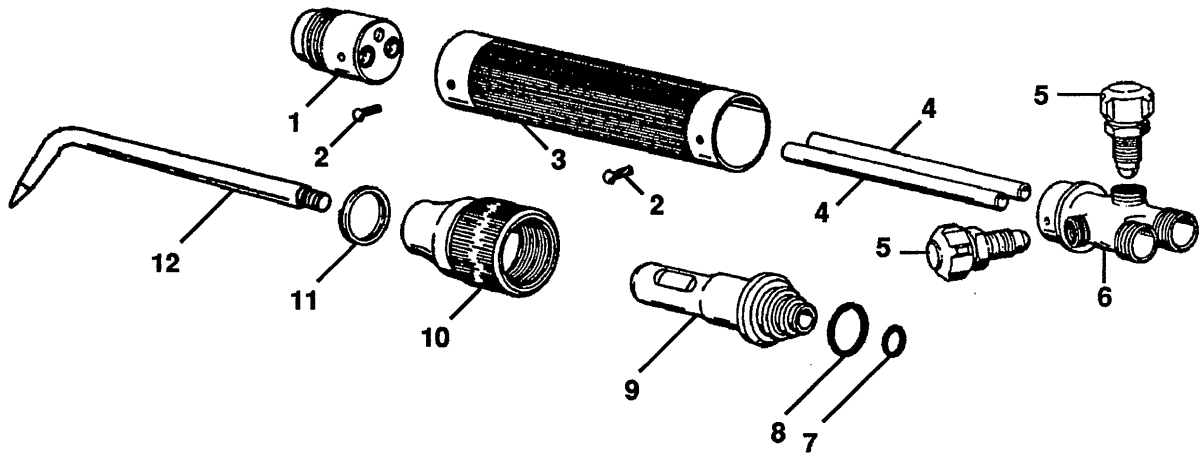


Marquette Model 21-100 Medium Duty Welding Torch

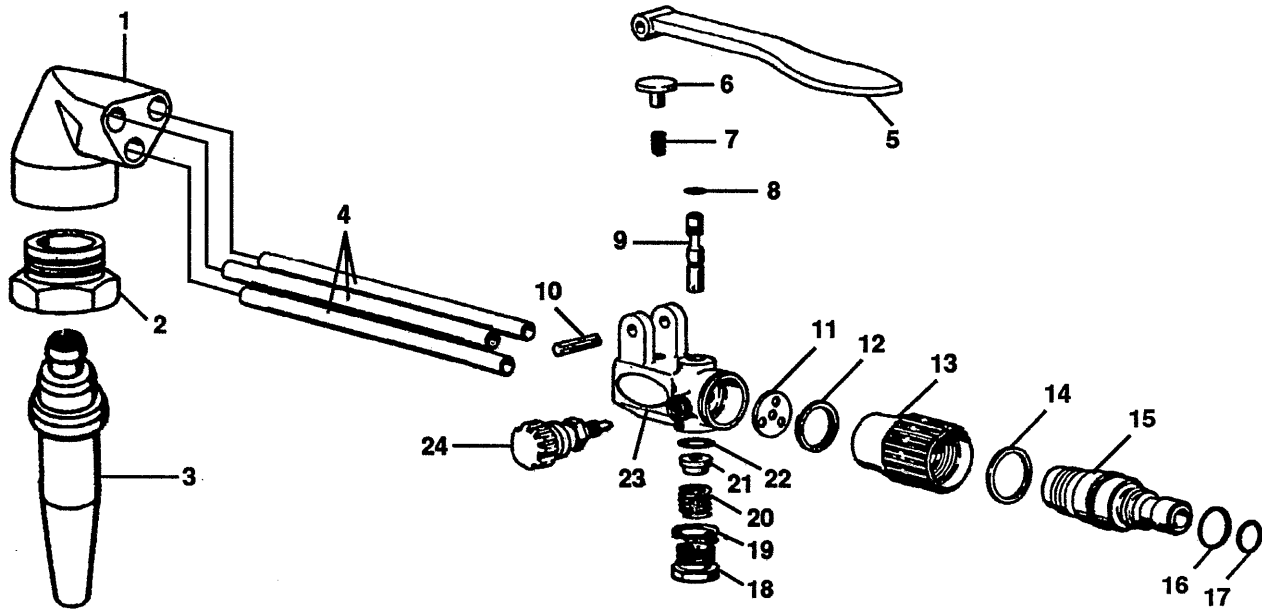


REF. NO.	MFG. NO.	S-S NO.	DESCRIPTION	CODE	REF. NO.	MFG. NO.	S-S NO.	DESCRIPTION	CODE
1	350-00308		Block		7	350-00317		O-Ring, Small	
2	350-00309		Drive Screw (2)		8	350-00316		O-Ring, Large	
3	350-00327		Handle Casing (Marquette)		9			Mixer Assembly — See Chart on page M-6	
	350-00310		Handle Casing (NAPA)		10	350-00315		Nut	
4	350-00311		Tube (2)		11	350-00314		Retaining Ring	
5	350-00313		Needle Valve Assembly (2)		12			Copper Tip End (only) — See Chart on page M-6	
6	350-00312		Tail						

Marquette

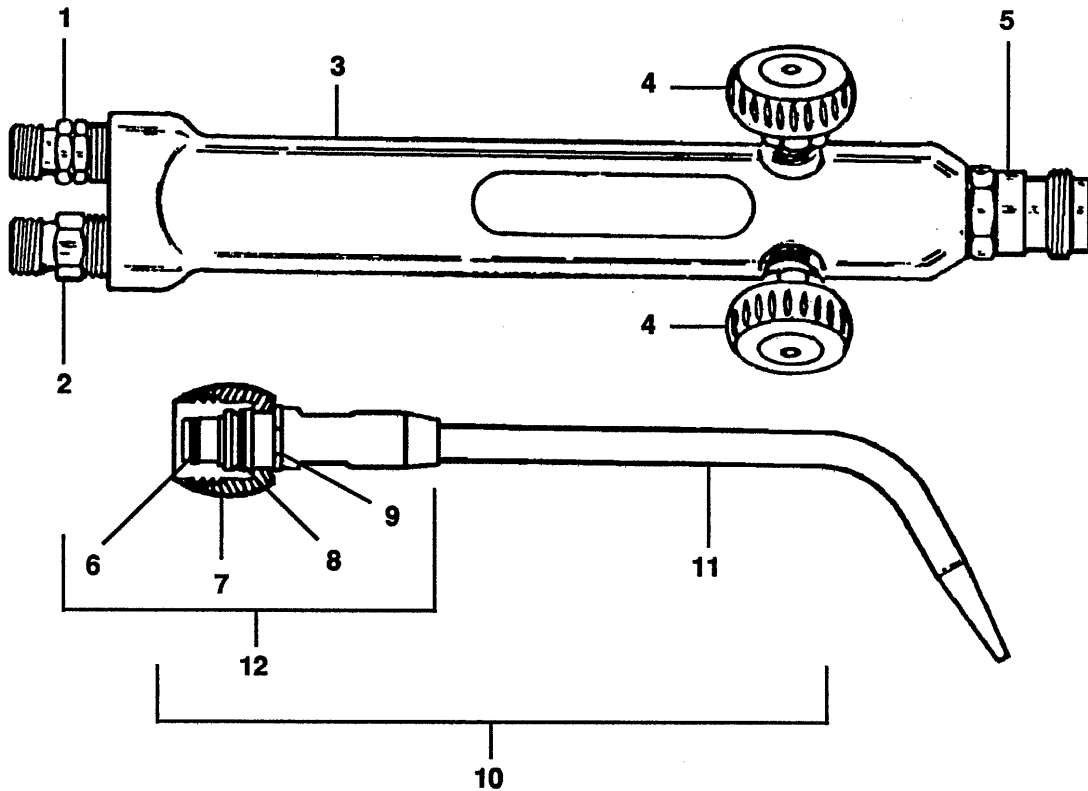
Model 21-110

Medium Duty Cutting Assembly



REF. NO.	MFG. NO.	S-S NO.	DESCRIPTION	CODE	REF. NO.	MFG. NO.	S-S NO.	DESCRIPTION	CODE
1	350-00285		Torch Head		14	350-00304		Washer	
2	350-00286		Tip Nut		15	350-00305		Connector Stem	
3			Cutting Tip — See Chart on page M-6		*16	350-00316		O-Ring, Large	
4	350-00287		Tube (3)		*17	350-00317		O-Ring, Small	
5	350-00288		Lever		18	350-00300		Cap	
6	350-00289		Button		*19	350-00299		Gasket	
*7	350-00290		Spring		*20	350-00298		Spring	
*8	350-00291		Plunger O-Ring		*21	350-00297		Disc	
*9	350-00292		Plunger		*22	350-00296		Valve O-Ring	
10	350-00293		Lever Roll Pin		23	350-00295		Body	
*11	350-00301		Gasket		24	350-00294		Needle Valve Stem Assembly	
*12	350-00302		Retaining Ring		*	350-00330X		Repair Kit	
13	350-00303		Torch Nut						

Marquette Model 22-101 Welding Torch



REF. NO.	MFG. NO.	S-S NO.	DESCRIPTION	CODE	REF. NO.	MFG. NO.	S-S NO.	DESCRIPTION	CODE
1	557-40059	Q-048	Acetylene Nipple		9	699-42185		Retaining Ring	
2	557-40060		Oxygen Nipple		10			Complete Tip Assembly — See Chart on page M-6	
3	510-40006		Body Forging		11			Copper Tip End (Only) — See Chart on page M-6	
4	501-40051		Needle Valve Assembly (2)		12			Brass Mixing Section (Only) — See Chart on page M-6	
5	509-40054		Block						
6	669-42080		O-Ring, Small						
7	559-40062		Mixer Nut						
8	669-42079		O-Ring, Large						

