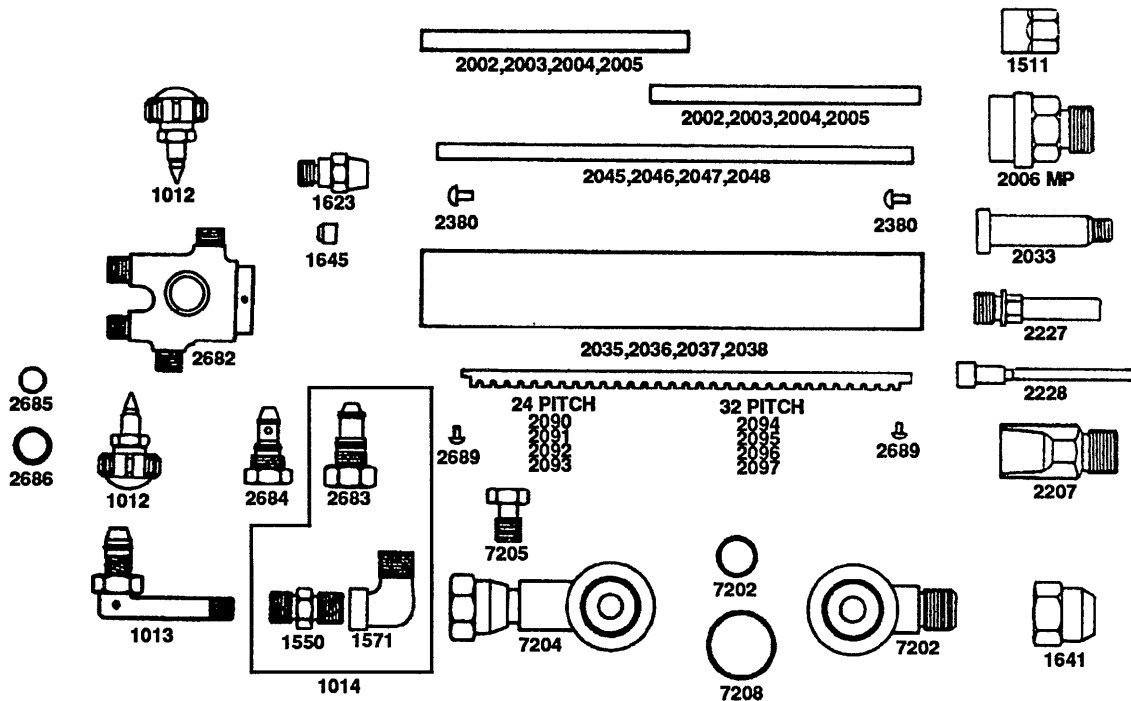


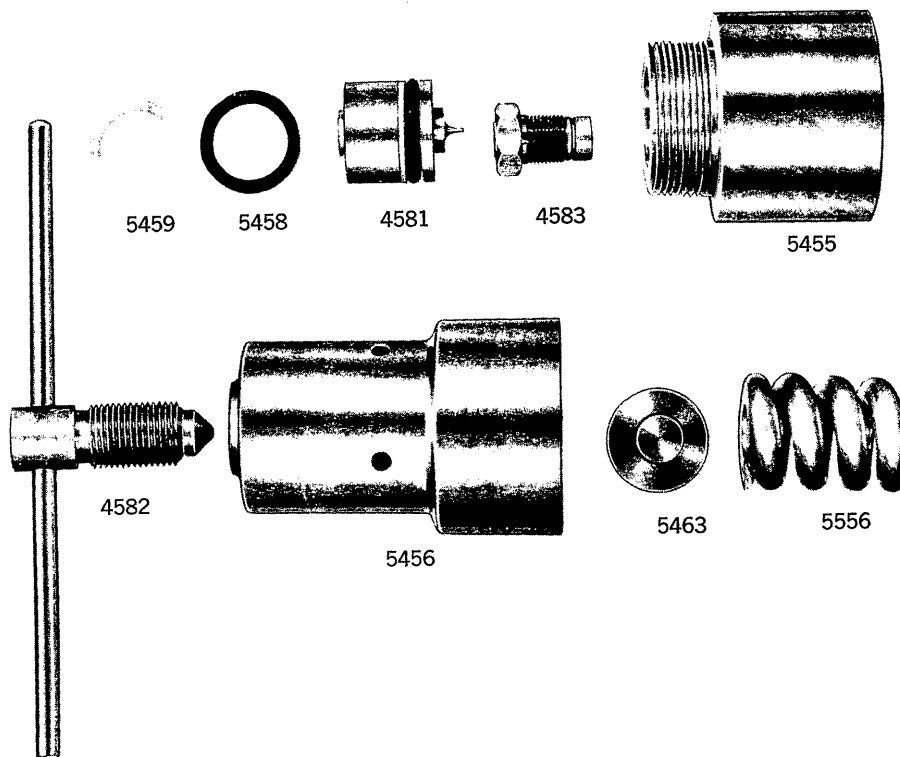
## Speedi-Cut Machine Torch



MFG. NO.	S-S NO.	DESCRIPTION	MFG. NO.	S-S NO.	DESCRIPTION
1008		Meco Speedi-Cut Machine Torch	2092		24 Pitch Rack for 16" Torch
1012		Body Assembly			w/Screws
1013		Valve Stem & Pack. Assy. (2 req.)	2093		24 Pitch Rack for 19" Torch
1014		High Pressure Lever Assembly			w/Screws
		Three Hose Adapter Assembly	2094		32 Pitch Rack for 10" Torch
		(Nos. 1550-1571-2683)			w/Screws
1028		Adjustable Swivel Head Assy.	2095		32 Pitch Rack for 13" Torch
1511		Mixer Nut			w/Screws
1550		1/4" NPTM to 9/16" - 18 Adapter	2096		32 Pitch Rack for 16" Torch
1571		1/4" NPT Street Ell			w/Screws
1623	E-122	Gland Nut	2097		32 Pitch Rack for 19" Torch
1641	E-080	Cutting Head Nut			w/Screws
1645	E-043	Cutting Head Tube Packing	2207		Mixer Head
2002		Gas Tube for 10" Torch (2)	2227		Medium Pressure Mixer Body
2003		Gas Tube for 13" Torch (2)	2228		Medium Pressure Mixer Stem
2004		Gas Tube for 16" Torch (2)	2380	E-146	Handle Retaining Screw (3)
2005		Gas Tube for 19" Torch (2)	2682		Torch Body
2006		Cutting Head Med. Pressure	2683		Poppet Valve Noz., 3 Hose Torch
2033		Mixer Shell Medium Pressure	2684		Poppet Valve Noz., 2 Hose Torch
2035		Plain Handle Tube for 10"	2685		Poppet Valve Nozzle O-Ring
		Torch (2 req.)			(Small)
2036		Plain Handle Tube for 13"	2686		Poppet Valve Nozzle O-Ring
		Torch (2 req.)			(Large)
2037		Plain Handle Tube for 16"	2689		Rack Retaining Screw (2)
		Torch (2 req.)	7202		Swivel Tip Outlet Half
2038		Plain Handle Tube for 19"	7204		Swivel Tip Inlet Half w/Union
		Torch (2 req.)			Shank & Nut
2045		High Press. O <sub>2</sub> for 10" Torch	7205		Swivel Tip Clamp Bolt
2046		High Press. O <sub>2</sub> for 13" Torch	7206		Clamp Bolt Washer (not shown)
2047		High Press. O <sub>2</sub> for 16" Torch	7207		Inner Seal O-Ring
2048		High Press. O <sub>2</sub> for 19" Torch	7208		Outer Seal O-Ring
2090		24 Pitch Rack for 10" Torch			
		w/Screws			
2091		24 Pitch Rack for 13" Torch			
		w/Screws			

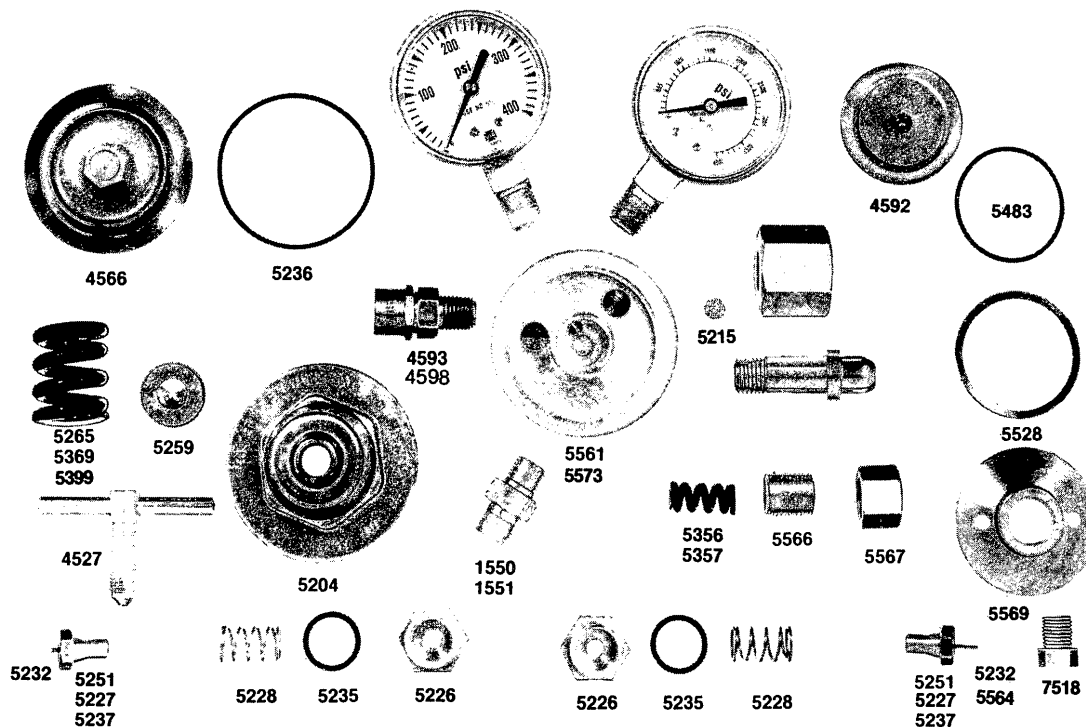
# Meco

## Type SH Regulator



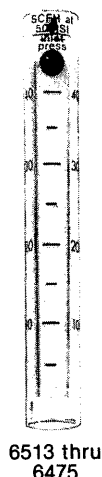
MFG. NO.	S-S NO.	DESCRIPTION	MFG. NO.	S-S NO.	DESCRIPTION
SH		Regulator	5456		Bonnet
4581		Piston Assembly	5459		Anti-Extrusion Ring
4582		Adj. Screw, Tee Handle	5463		Spring Button
4583		Seat, Nozzle & Filter Assembly	5556		Bonnet Spring
5449		Seal, O-Ring			
5455		Body			

# Meco Type A-B Dubbl-Stage Regulator

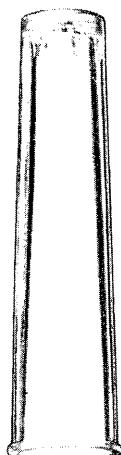


MFG. NO.	S-S NO.	DESCRIPTION	MFG. NO.	S-S NO.	DESCRIPTION
A-B		Dubbl-Stage Regulator			for 150 PSI Press. (Purple)
1550		Oxygen Outlet Bushing	5356		Bonnet Spring 1st Stage
1551		Acetylene Outlet Bushing			L.P. (Red)
4527		Adjusting Screw	5357		Bonnet Spring - 1st Stage
4566	E-188	Diaph. Assy. 2nd Stage S.S.			L.P. (Green)
4592	E-225	Diaph. Assy., 1st Stage, S.S.	5369		Bonnet Spring, L. P. 2nd Stage
4593		Relief Valve (not used on fuel gas regulators) 180 PSI Preset			for 15 PSI Press. (Black)
4598		Relief Valve #110 Set for Flowmeter & Flowgauge	5373		Flowmeter Body
5204		Bonnet - 2nd Stage	5399		Bonnet Spring, 2nd Stage for 100 PSI pressure (Blue)
5215	E-258	Sintered Filter (Incl. in 5561 Body)	5483	E-231	O-Ring (Bonnet 1st Stage)
5226		Nozzle (2), 5/32" Diameter	5528	E-207	Neoprene
5227	E-199	Seat Assy. (Buna-N) LPG & CO <sub>2</sub> (2)	5561		Friction Washer (1st Stage)
5228		Seat Spring (2)			A-B Regulator Body (cylinder type)
5232		.687" Push Off Pin 2nd Stage, H.P. Gases & 1st Stage LP Gases	5564		.651" Push Off Pin - 1st Stage H.P. Gases
5235	E-235	O-Ring (Nozzle) (2) Neoprene	5566		Adj. Screw - 1st Stage
5236	E-210	O-Ring (2nd Stage Bonnet) Neoprene	5567		Adj. Screw Cap, 1st Stage
5237	E-200	Seat Assembly for High Purity Gases, Viton (2)	5569		Bonnet - 1st Stage
5251	E-198	Seat Assembly, Neoprene Standard (2)	5573		Flowmeter Type Body
5259		Spring Button - 2nd Stage	7518		Gauge Hole Plug, used in Relief Valve Hole on Fuel Gas Regs., 1/4" NPTM
5265		Bonnet Spring, 2nd Stage			

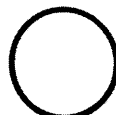
# Meco Flowmeter



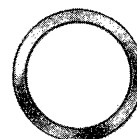
6513 thru  
6475



6502



6508



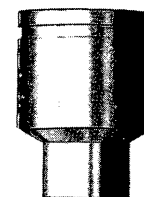
6500  
6501



6509



6503



6510  
6511  
6512



2621



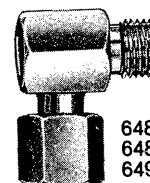
6485  
6486  
6487



6504  
6505



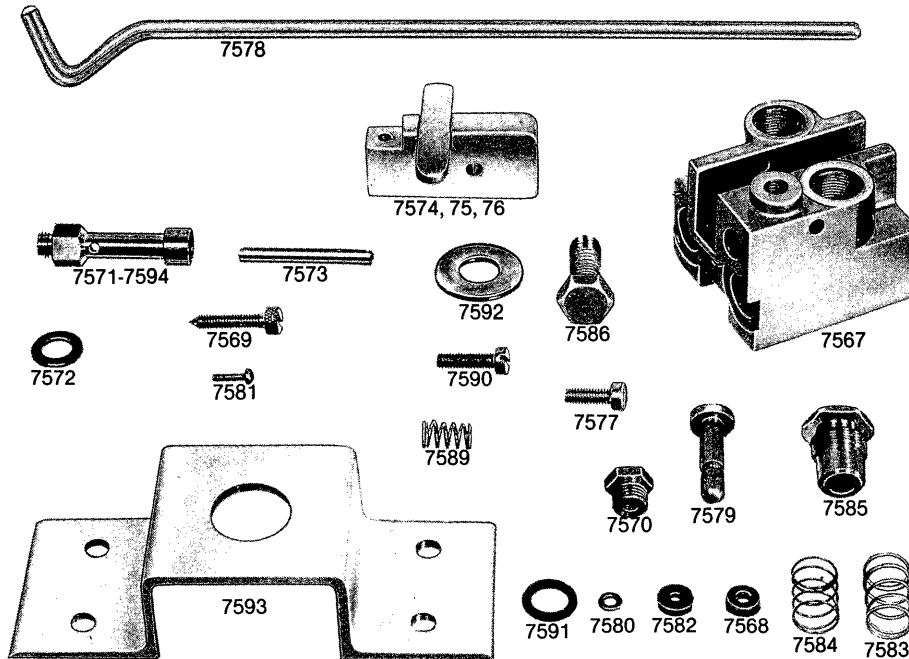
6506  
6507



6488  
6489  
6490

MFG. NO.	S-S NO.	DESCRIPTION	MFG. NO.	S-S NO.	DESCRIPTION
2621	E-033	Meco Flowmeter	6505		Black
6452		Center Flowtube O-Ring Seal, Nitrogen, 0-80 CFH Tube & Ball Assy (50PSI)	6506		Valve Stem Assembly, W/Knob, Green, Chrome
6454		Hydrogen 0-150 CFH Tube & Ball Ball (50PSI)	6507		Inlet Adaptor, Chrome 1/8 x 1/4 NPT Male
6460		O <sub>2</sub> , 0-35 CFH Tube & Ball Assy (50PSI)	6508		Inlet Adaptor, Brass 1/8 x 1/4 NPT Male
6475		CO <sub>2</sub> , 0-90 CFH Tube & Ball Assy (80PSI)	6509		Outer Dome O-Ring Seal, Body Recess O-Ring Seal
6485		Flowmeter Angle Adaptor RH Chrome	6510		Body 9/16" - 18 Male Chrome R.H.
6486		Flowmeter Angle Adaptor LH Chrome	6511		Body 9/16" - 18 RH Male Brass
6487		Flowmeter Angle Adaptor RH Brass	6512		Body 5/8" - 18 RH Female Brass
6488		Reg. to Flowmeter Adaptor 9/16" - 18 RH Brass	6513		O <sub>2</sub> Tube & Ball Assy 0-15 LPM (50PSI)
6489		Reg. to Flowmeter Adaptor 9/16" - 18 RH Brass	6514		O <sub>2</sub> Tube & Ball Assy 0-5 LPM (50PSI)
6490		Reg. to Flowmeter Adaptor 9/16" - 18 RH Chrome	6515		Argon, 0-45 CFH, Tube & Ball Assy (50PSI)
6500		Dome Bushing (Chrome)	6516		Argon, 0-80 CFH Tube & Ball Assy (50PSI)
6501		Dome Bushing (Brass)	6517		CO <sub>2</sub> , 0-40 CFH Tube & Ball Assy (50PSI)
6502		Dome	6518		Helium, 0-25 CFH Tube & Ball Assy (50PSI)
6503	Tube Gasket	6519		Helium, 0-120 CFH Tube & Ball Assy (50PSI)	
6504	E-220	Valve Stem Assembly, W/Knob,			

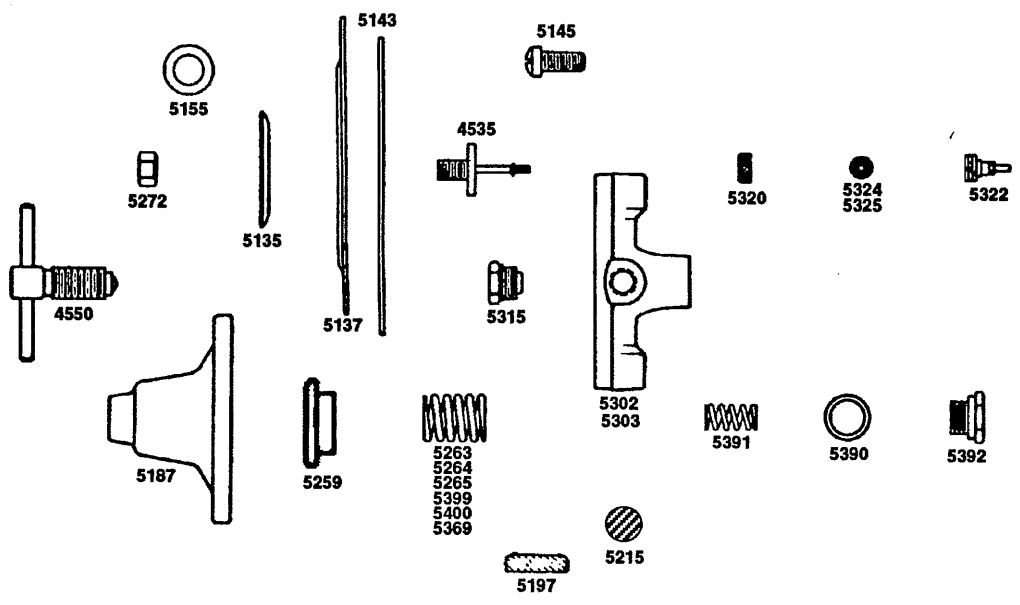
# Meco Gas Economizer



MFG. NO.	S-S NO.	DESCRIPTION	MFG. NO.	S-S NO.	DESCRIPTION
7260		Meco Gas Economizer Pilot Valve Pilot (for 7267 Inert Gas Economizer) (not illustrated)	7389 7390 7392		Valve Seat (2) Valve Spring (2) Diaphragm Assy. (2) (not illustrated)
7370		Economizer Body	7393		Pilot Valve Burner Assy. (for 7268 Economizer) (not illustrated)
7371		Pilot Valve			
7372		Pilot Valve Body			
7373		Pilot Valve Burner Assy. (for 7266 Economizer)			
7374		Rocker Arm			
7375		Valve Seat Screw (2)			
7376		Valve Plunger (2)			
7377		Valve Guide (2)			
7378		Diaphragm Retainer (2)			
7379		Inlet/Outlet Adaptor, R.H., (2) 9/16" - 18			
7380		Inlet/Outlet Adaptor, L.H., (2) 9/16" - 18			
7381		O-Ring (for 7373 Pilot Valve Burner Assy)			
7382		Locking Screw (2)			
7383		Adjusting Screw (2)			
7384		Adjusting Screw Nut (2)			
7385		Hinge Pin			
7386		Hook			
7387		Friction Ring (2)			
7388		Diaphragm (2)			

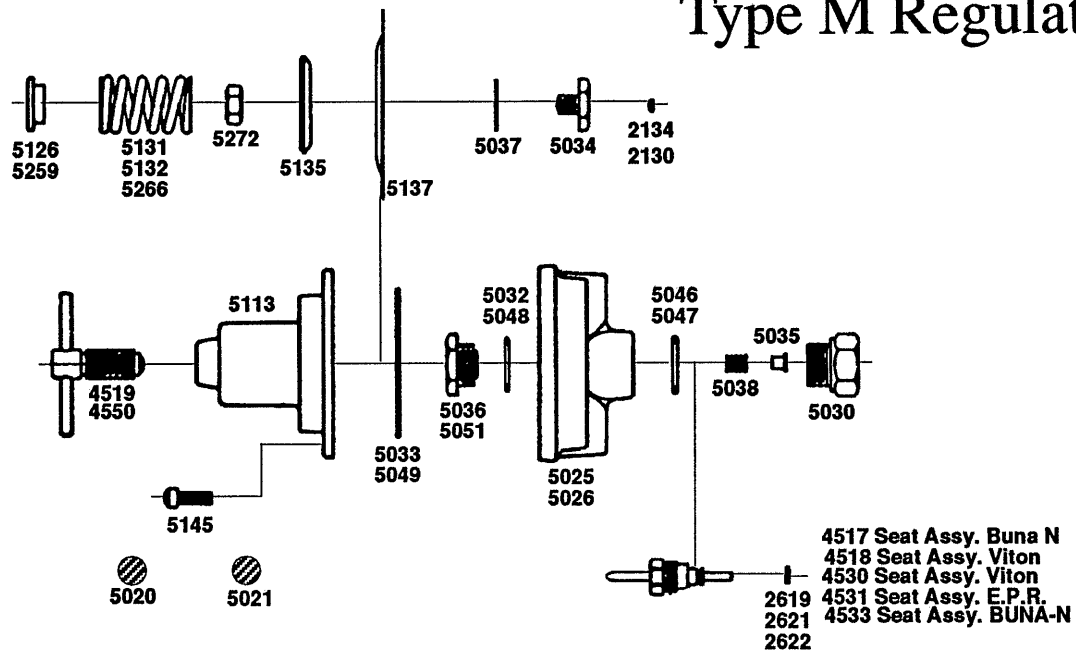
# Meco

## Type O Station Regulator



MFG. NO.	S-S NO.	DESCRIPTION	MFG. NO.	S-S NO.	DESCRIPTION
Type O		Station Regulator	5302		Body W/Two Outlets, 1/4" NPT Female
4509		Diaphragm - Yoke Assy.	5303		Body W/Three Outlets, 1/4" NPT Female
* 4535		Diaphragm Stud & Ling Assy.	5315		Nozzle
4550	E-064	Adjusting Screw Assembly	5322		Seat Holder
* 5135		Diaphragm Plate	5320		Seat Holder Nut
* 5137	E-070	Diaphragm, Stainless Steel	5324		Seat For Acetylene Gas, EPR
5143	E-050	Diaphragm Gasket	5325	E-164	Seat For Gases Other Than Acety., Buna-N
5145	E-191	Bonnet Screw (8)	5369		Bonnet Spring, For 20 PSIG Max. Outlet Press.
* 5155	E-056	Yoke Gasket	5391		Back Cap Spring
5187		Bonnet	5390	E-168	Back Cap Gasket
5197		Filter Screen	5392		Back Cap
5215	E-258	Filter Screen	5399		Bonnet Spring, For 30 PSIG Max. Outlet Press.
5259		Spring button	5400		Bonnet Spring, For 100 PSIG Max. Outlet Press.
5263		Bonnet Spring, For 10 PSIG Max. Outlet Press.	* 5272		Diaphragm - Yoke Assy.
5264		Bonnet Spring, For 40 PSIG Max. Outlet Press.			
5265		Bonnet Spring, For 70 PSIG Max. Outlet Press.			

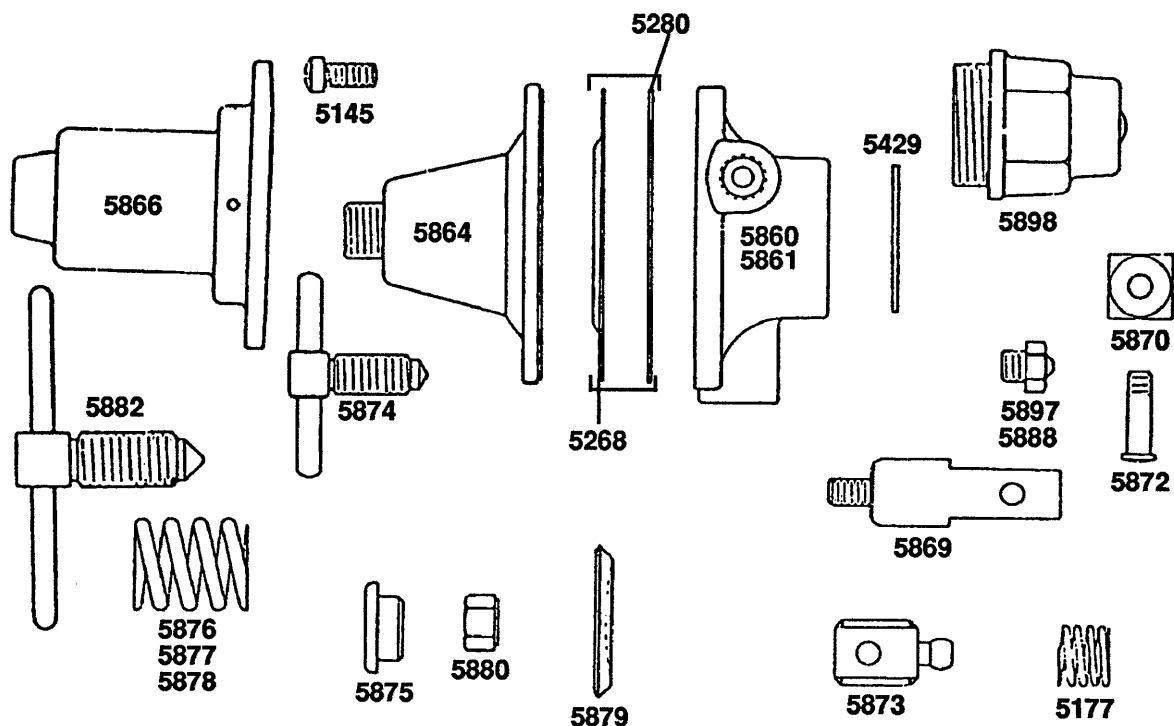
**Type M Regulators**



MFG. NO.	S-S NO.	DESCRIPTION	MFG. NO.	S-S NO.	DESCRIPTION
Type M		Regulators	5032		Nozzle Seal O-ring, BUNA-N, N <sub>2</sub> , H <sub>2</sub> , Helium, Propane, Argon, CO <sub>2</sub> & Air
2130		O-Ring, Viton for Diaphragm Stud, Oxygen	5033		Diaphragm Seal (O-Ring) BUNA-N, N <sub>2</sub> , H <sub>2</sub> , Helium, Propane, Argon, CO <sub>2</sub> & Air
2134		O-Ring BUNA-A for Diaphragm Stud, N <sub>2</sub> , H <sub>2</sub> , Helium, Propane, Argon, CO <sub>2</sub> & Air	* 5034		Diaphragm Stud
2619	E-033	O-Ring, Viton for Seat Holder, O <sub>2</sub>	5035		Seat Holder Guide
2621		O-Ring BUNA-N for M Seat Holder, N <sub>2</sub> , H <sub>2</sub> , Helium, Propane Argon, CO <sub>2</sub>	5036		Nozzle, .234" Orifice Diameter, Manifold
2622		O-Ring, E.P.R. for Seat Holder, Acetylene	* 5037		Diaphragm Stud Gasket, Teflon
4508		Diaphragm Assembly	5038		Rear Spring
4517		Seat Assy., BUNA-N 7/16", Station, O <sub>2</sub> & Acetylene	5046		Back Cap Seal (O-Ring) BUNA-N, N <sub>2</sub> , H <sub>2</sub> , Helium, Propane, Argon, CO <sub>2</sub> & Air
4518		Seat Assy., Viton 7/16", Station, O <sub>2</sub> & Acetylene	5047		Back Cap Seal (O-Ring) Viton, Oxygen and Acetylene
4519	E-100	Adjusting Screw Assembly	5048		Diaphragm Seal (O-Ring), Viton
4530		Seat Assy., Viton .234" Orifice, Manifold, Oxygen	5049		Diaphragm Seal (O-Ring) Viton, O <sub>2</sub> & Acety.
4531		Seat Assy., EPR .234" Orifice, Manifold, Acetylene	5051		Nozzle 7/16" Diameter, Station
4533		Seat Assy., BUNA-N .234" Orifice, Manifold, N <sub>2</sub> , H <sub>2</sub> , Helium, Propane, Argon, CO <sub>2</sub> & Air	5113		Bonnet
4550	E-064	Adj. Screw Assy., Used in M-250 only	5126		Spring Button, Used in M-30, M-140, & M-Acety. Manifold Regs.
5020		Filter Screen, Used in Line Bodies	5131		Bonnet Spring, Used in M-30, M-140, & M-Acety. Manifold Regs.
5021		Sintered Filter, Standard	5132		Bonnet Spring, Used in M-140 Regs.
5025		Body, (Has 1/4" NPT opening for Low Press. Gauge) Line/Station	* 5135		Diaphragm Plate
5026		Body, (Has 1/4" NPT openings for High & Low Press. Gauges) Manifold	* 5137	E-070	Diaphragm, S.S.
5030		Back Cap	5145	E-191	Bonnet Screws (8)
			5259		Spring Button, in M-250 only
			5266		Bonnet Spring, Used in M-250 only (Yellow)
			* 5272		Diaphragm Plate Nut
					<b>Diaphragm Assembly</b>

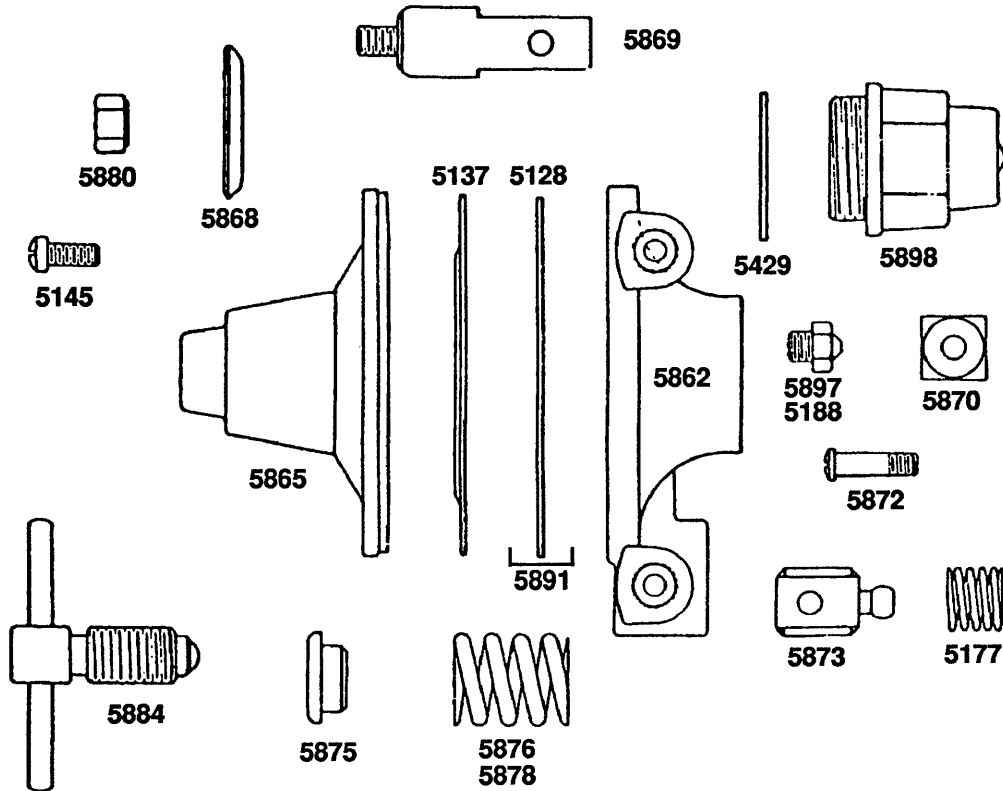
# Meco

## Type P Corrosive Gas Regulators



MFG. NO.	S-S NO.	DESCRIPTION	MFG. NO.	S-S NO.	DESCRIPTION
Type P		Corrosive Gas Regulator	5875		Spring Button
5145	E-191	Bonnet Screws	5876		Bonnet Spring, 80 PSI
5177	E-267	Back Cap Spring	5877		Bonnet Spring, 580 PSI
5268	E-071	Stainless Steel Diaph. (2) (Part of 5892) for 600 PSI Type	5878		Bonnet Spring, 160 PSI
5280		Diaphragm Liner, Teflon (Part of 5892)	5879		Diaphragm Plate
5429	E-061	Back Cap Gasket, Teflon	5880		Diaphragm Plate Nut
5860		Body, 1 Inlet 2 Outlet	5882		Tee Adjusting Screw for Type P-600
5861		Body, Cylinder Type	5888		Nozzle, 5/64", Stainless Steel (Use In PS Regs. Only)
5864		Bonnet, Tee Type	5892		S.S. Diaph. & Yoke Assy. w/Teflon Liner
5866		Bonnet, For Type P-600 only	5897		Nozzle, 5/64" Monel (For Use in PM Regulators Only)
5869		Yoke	5898		Back Cap
5870		Seat Block w/Kel-F Seats			<b>S.S. Diaph. &amp; Yoke Assy. w/Teflon Liner</b>
5872		Yoke Clamping Screw			
5873		Yoke Guide			
5874		Tee Adjusting Screw			

## Type O Corrosive Gas Regulators



MFG. NO.	S-S NO.	DESCRIPTION	MFG. NO.	S-S NO.	DESCRIPTION
Type O		Corrosive Gas Regulator	5878		Bonnet Spring, 160 PSI
* 5137	E-070	Stainless Steel Diaph.	5884		Tee Adjusting Screw
5145	E-191	Bonnet Screws	5897		Noz., 5/64" Monel (For Use in OM Regulators Only)
* 5218		Diaph. Liner, Teflon			Back Cap
5429	E-061	Back Cap Gasket, Teflon	5898		Back Cap
5870		Seat Block w/Kel-F Seats	5888		Noz., 5/64" S.S. (Use OS Regs. Only)
5177	E-267	Back Cap Spring			S.S. Diaph. w/Teflon Liner
5872		Yoke Clamping Screw	*		
* 5880		Diaphragm Plate Nut			
5862		Body, Cylinder Type			
5865		Bonnet			
* 5868		Diaphragm Plate			
* 5869		Yoke			
5891		S.S. Diaphragm and Yoke Assy. with Teflon Liner			
5873		Yoke Guide			
5875		Spring Button			
5876		Bonnet Spring, 80 PSI			

## Meco Type B Industrial Regulator



5235



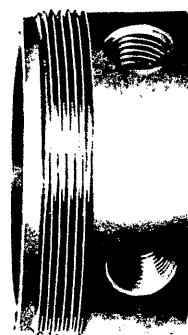
5226



5232

5227  
5237  
5251

5228

5222  
5224  
5225  
5231

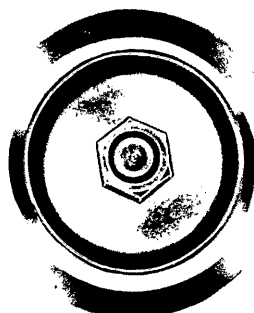
5197



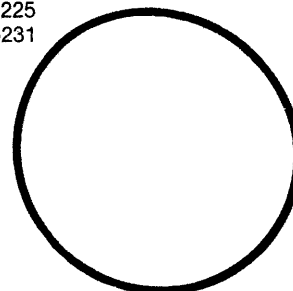
5215



5259

5263  
5265

4566



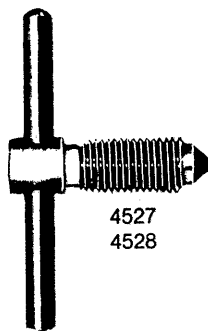
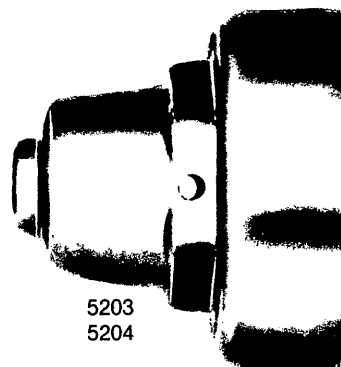
5236



5274

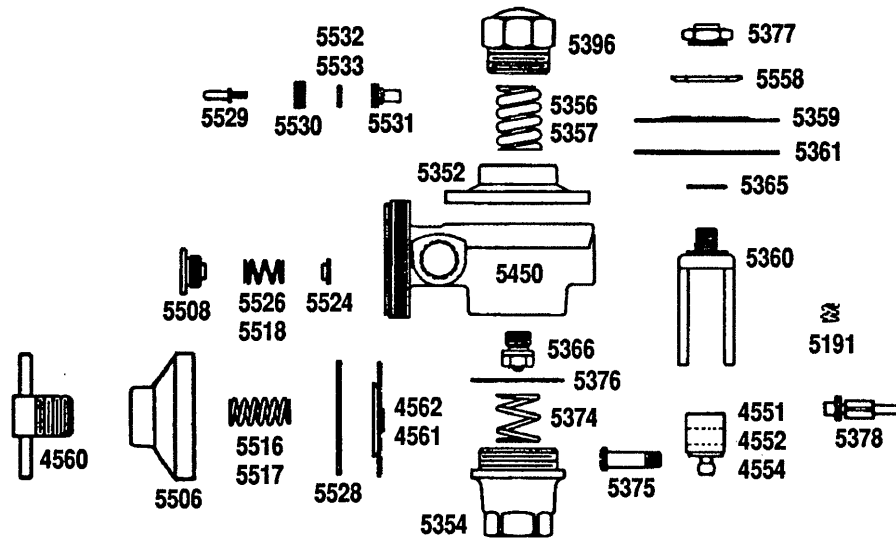


5273

4527  
45285203  
5204

MFG. NO.	S-S NO.	DESCRIPTION	MFG. NO.	S-S NO.	DESCRIPTION
4527		B Regulator Low Press. Tee Adj. Screw, Fuel Gas	5265 5273 5274		Bonnet Spring - high pressure Slotted Adj. Screw Protection Cap for Slot Adj. Screw
4528	E-101	High Press. Tee Adj. Screw, Oxygen			
4566	E-188	Diaphragm Assembly. S.S.			
5197		Filter Screen Brass			
5203		Cap Type Bonnet			
5204		Bonnet, Brass Tee Type			
5215	E-258	Sintered Brass Filter, Standard			
5222		Flowmeter Body			
5224		Body (Indust.) 1-HP, 2-LP			
5225		Body (Indust.) 1-HP, 3-LP			
5226		Nozzle 5/32 Diameter			
5227	E-199	Seat Assembly (Buna-N)			
5228		Seat Spring			
5231		Industrial Body 2-HP, 2-LP			
5232		.687" Push Off Pin for all Gases			
5235	E-235	Nozzle Seal O-Ring			
5236	E-210	Diaphragm Seal O-Ring			
5237	E-200	Seat Assembly (Viton)			
5251	E-198	Seat Assembly (Neoprene)			
5259		Spring Button			
5263		Bonnet Spring - low pressure			

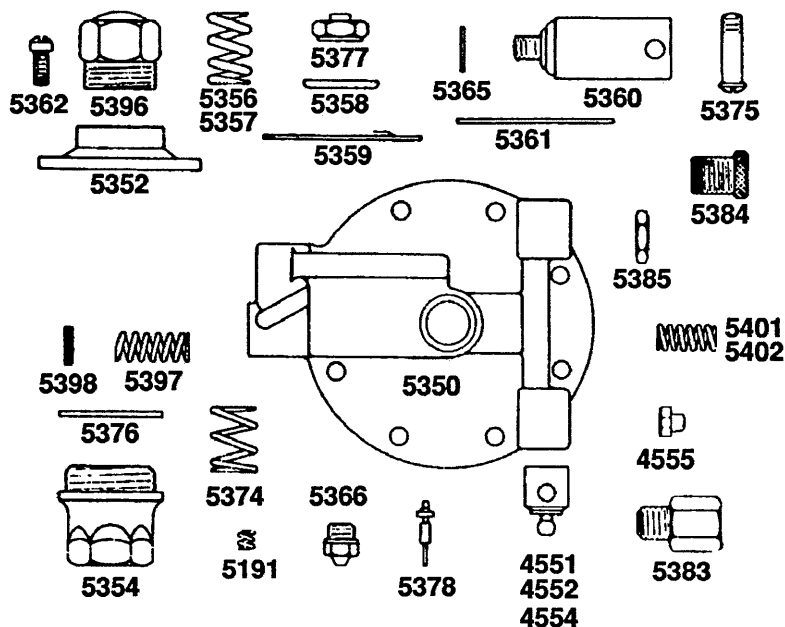
**Type RS Dubbl-Stage Regulators**



MFG. NO.	S-S NO.	DESCRIPTION	MFG. NO.	S-S NO.	DESCRIPTION
4551	E-068	RS Dubbl-Stage Regulator	5366		Nozzle, 1st Stage
4552		Seat Block & Seat Assy., White Nylon, O <sub>2</sub>	5374		Back Cap Spring
4554		Seat Block & Seat Assy., Black Nylon for Acety.	5375		Yoke Clamping Screw
4560		Adj. Screw Assy., 2nd Stage	5376	E-065	Back Cap Gasket
4561	E-067	Diaphragm Assy., 2nd Stage, Buna-N, LPG & CO <sub>2</sub>	5377		Diaphragm Plate Nut
4562		Diaph. Assy., 2nd Stage, H.P., O <sub>2</sub>	5378		Check Valve
5191	E-161	Check Valve Spring	5396		Bonnet Nut
5215	E-258	Filter Screen - Not illustrated	5450		Body
5352		Bonnet	5506		Bonnet, 2nd Stage
5354		Back Cap	5508		Nozzle, Second Stage
5356		Bonnet Spring, Acety., 60 PSIG, 1st Stage	5516		Bonnet Spring, 2nd Stage, 30 PSIG
5357	E-066	Bonnet Spring, 180 PSIG, 1st Stage	5517		Bonnet Spring, 2nd Stage, 90 PSIG
5358		Diaphragm Plate	5518		Rear Spring, 2nd Stage, H.P.
5359	E-234	Diaphragm - 1st Stage, S.S.	5524		Seat Guide, Second Stage
5360		Yoke	5526	E-132	Rear Spring, 2nd Stage, L.P.
5361	E-245	Diaphragm Gasket	5528	E-207	Friction Ring, Second Stage
5362		Bonnet Screws, Not illustrated (8)	5529		Seat Holder Stem, 2nd Stage
5365		Yoke Gasket	5530	E-172	Seat Holder, Nut, 2nd Stage
			5531	E-173	Seat Holder, Second Stage
			5532	E-133	Seat, Holder, 2nd Stage Buna-N
			5533		Acetylene Seat, 2nd Stage, Butyl

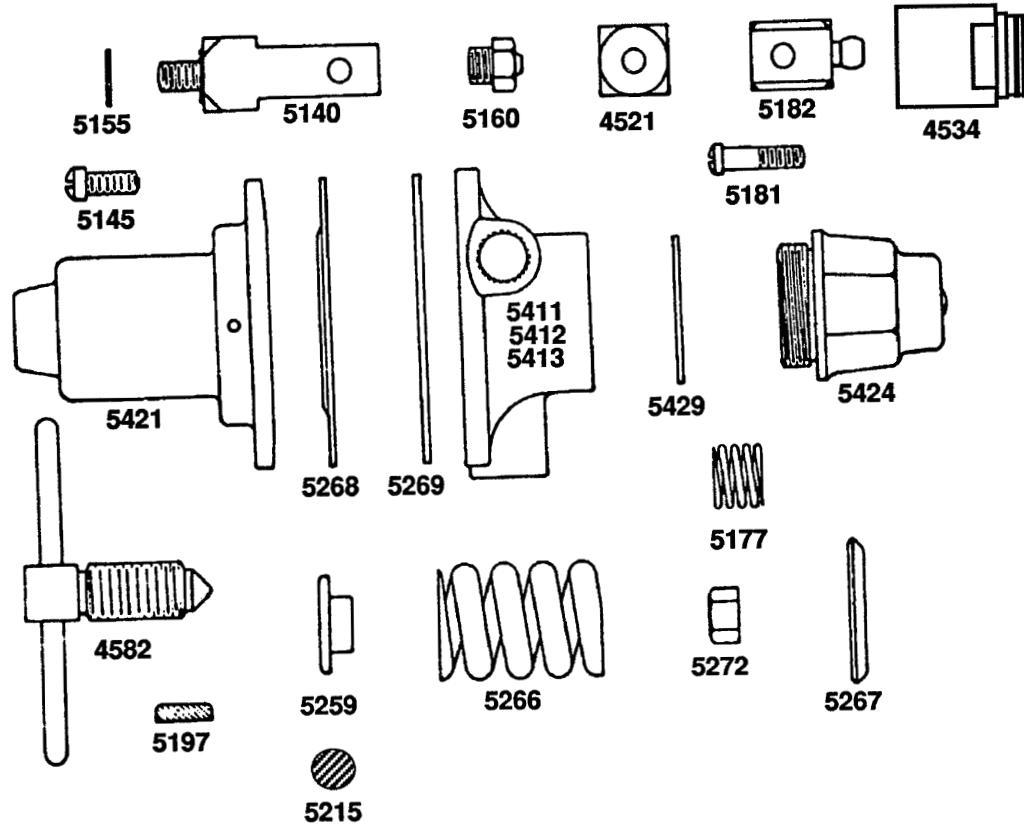
# Meco

## Type OR Dubbl-Stage Regulators



MFG. NO.	S-S NO.	DESCRIPTION	MFG. NO.	S-S NO.	DESCRIPTION
4551	E-068	OR Dubbl Stage Regulator First Stage HP	5361	E-245	Diaphragm Gasket - 1st Stage
4552		Seat Assy., Nylon White Seat for O <sub>2</sub>	5362		Bonnet Screw (8) - 1st Stage
4554		Seat Assy., Nylon Black Seat for Acety.	5365		Yoke Gasket - 1st Stage
4555	E-155	Safety Valve Seat Assembly	5366		Nozzle - 1st Stage
5191	E-161	Check Valve Spring - 1st Stage	5374		Back Cap Spring - 1st Stage
5350		Body	5375		Yoke Clamping Screw - 1st Stage
5352		Bonnet - 1st Stage	5376	E-065	Back Cap Gasket - 1st Stage
5354		Back Cap - 1st Stage	5377		Diaphragm Plate Nut - 1st Stage
5356		Bonnet Spring-Acety. - 1st Stage	5378		Check Valve - 1st Stage
5357		Bonnet Spring-Oxygen - 1st Stage	5383	E-165	Safety Valve Body
5358		Diaphragm Plate - 1st Stage	5384		Safety Valve Bonnet
5359	E-234	Diaphragm, 1st Stage, S.S.	5385		Safety Valve Lock Nut
5360		Yoke - 1st Stage	5396		Bonnet Nut - 1st Stage
			5397		Filter Spring
			5398		Filter
			5401		Safety Valve Spring, Low Press.
			5402		Safety Valve Spring, High Press.

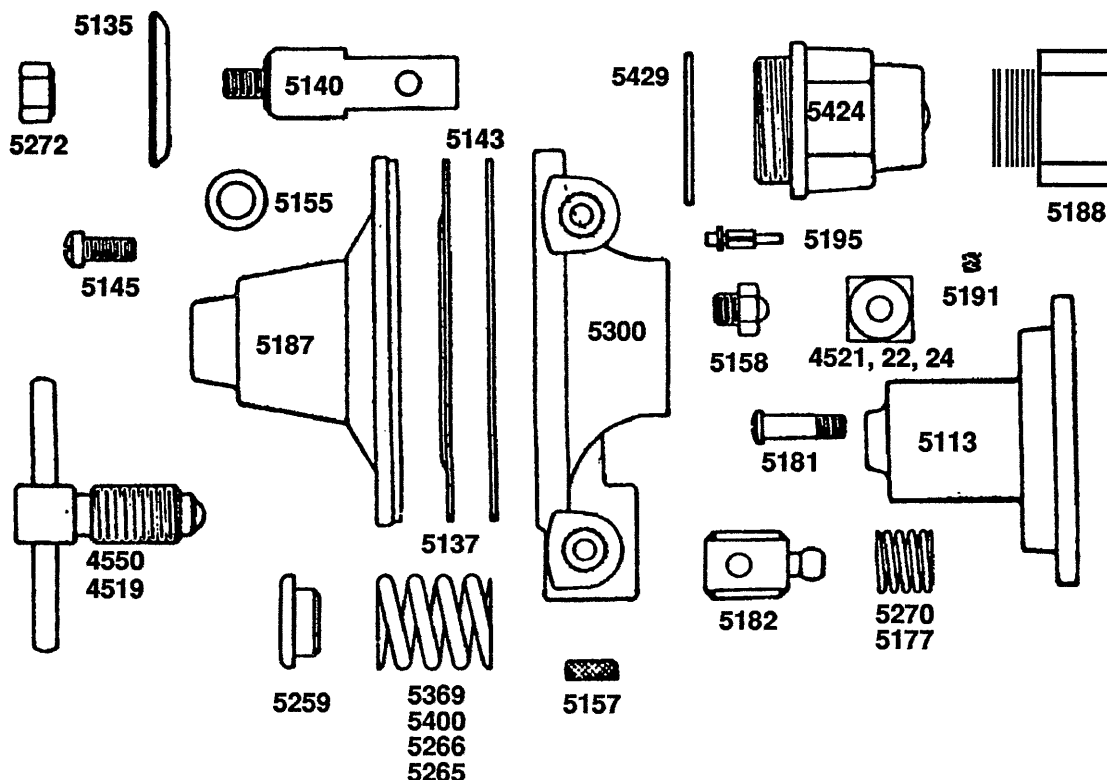
## Type P-600 Industrial Regulator



MFG. NO.	S-S NO.	DESCRIPTION	MFG. NO.	S-S NO.	DESCRIPTION
P-600		Industrial Regulator	5259		Spring Button for 600 lb. Type
4507		Diaphragm - Yoke Assy. - 600 PSI Type	5266		Comp. Spring for 600 lb. Press.
4521	E-004	Seat Block w/White Nylon Seats for Oxygen	* 5267	E-071	Diaphragm Plate
4534		Enviro-Cap, Water Heated Back Cap Assembly	* 5268		Diaphragm
4582		Adjusting Screw 600 lb. Type	* 5269	E-051	Diaphragm Gasket
* 5140		Yoke	5411		Diaphragm Plate Nut
* 5145	E-191	Bonnet Screw (6)	5412		Body, 1 inlet, 2 outlets
* 5155	E-056	Yoke Gasket, Teflon	5413		Body, 1 inlet, 3 outlets
5160	E-086	Nozzle with 1/8" Orifice	5421		Body, 2 inlets, 2 outlets
5177	E-267	Rear Spring	5424		Regulator Bonnet, Long Barrel 600 Type
5181	E-131	Yoke Clamping Screw	5429		Back Cap
5182	E-062	Yoke Guide			Back Cap Gasket
5197		Filter Screen			Diaphragm Yoke Assembly
5215	E-258	Sintered Filter			600 PSI Type

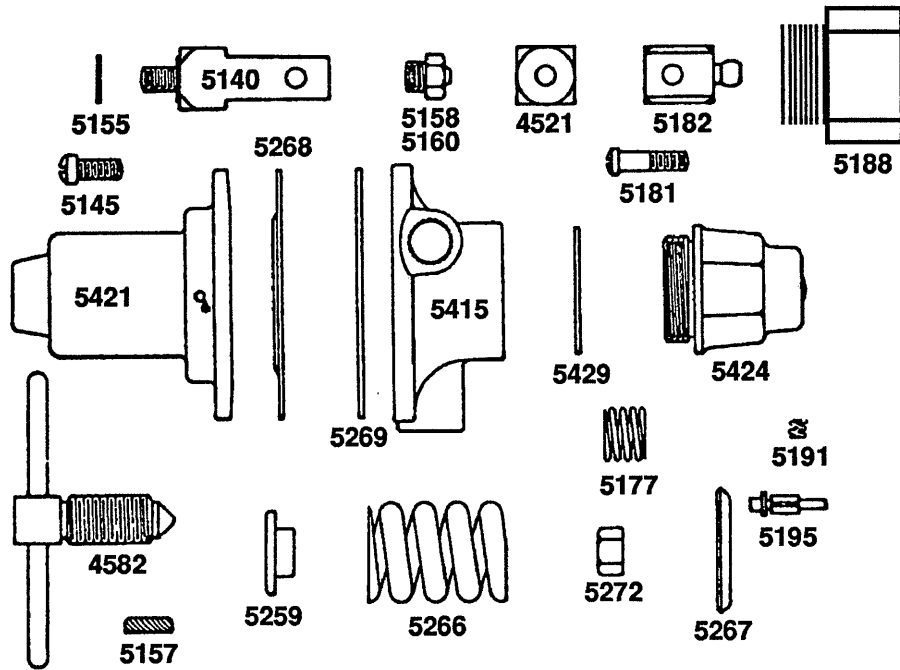
# Meco

## Type O Multi-Seat Regulator



MFG. NO.	S-S NO.	DESCRIPTION	MFG. NO.	S-S NO.	DESCRIPTION
Type O		Multi-Seat Regulator	5157		Sintered Filter
1550		Oxygen Outlet Bushing (not illustrated)	5158	E-084	Nozzle with 1/8" Orifice
1551		Acety. Outlet Bushing (not illustrated)	5177	E-267	Rear Spring, Oxygen
4505		Diaphragm, Yoke Assy.	5181	E-131	Yoke Clamping Screw
4519	E-100	Adj. Screw Assy. for 0-250 Reg. only	5182	E-062	Yoke Guide
4521	E-004	Seat Block with Nylon Seats - White for Oxygen	5187		Bonnet, Tee Type
4522	E-072	Seat Block with Nylon Seats - Black for Acetylene	5188	E-226	Body Nut
4524	E-224	Seat Block w/Kel-F Seats for CO <sub>2</sub>	5191	E-161	Check Valve Spring
4550	E-064	Adjusting Screw Assembly	5195	E-162	Check Valve for 5/64" Nozzle
5113		Bonnet for 0-250 Regulator, only	5259		Spring Button
* 5135		Diaphragm Plate	5265		Bonnet Spring
* 5137	E-070	Diaphragm, S.S.	5266		Bonnet Spring for 0-250 Reg. only
* 5140		Yoke	5270	E-163	Rear Spring, Acetylene
5143	E-050	Diaphragm Gasket	* 5272		Diaphragm Nut Plate
5145	E-191	Bonnet Screw (8)	5300		Left Hand Body, Standard
* 5155	E-056	Yoke Gasket, Teflon	5307		Gauge Guard Assy. (not shown)
			5369		Acetylene Compression Spring
			5400		O <sub>2</sub> Compression Spring (140 lb.)
			5424		Back Cap
			5429	E-061	Back Gas Gasket, Teflon
					Diaphragm, Yoke Assy.

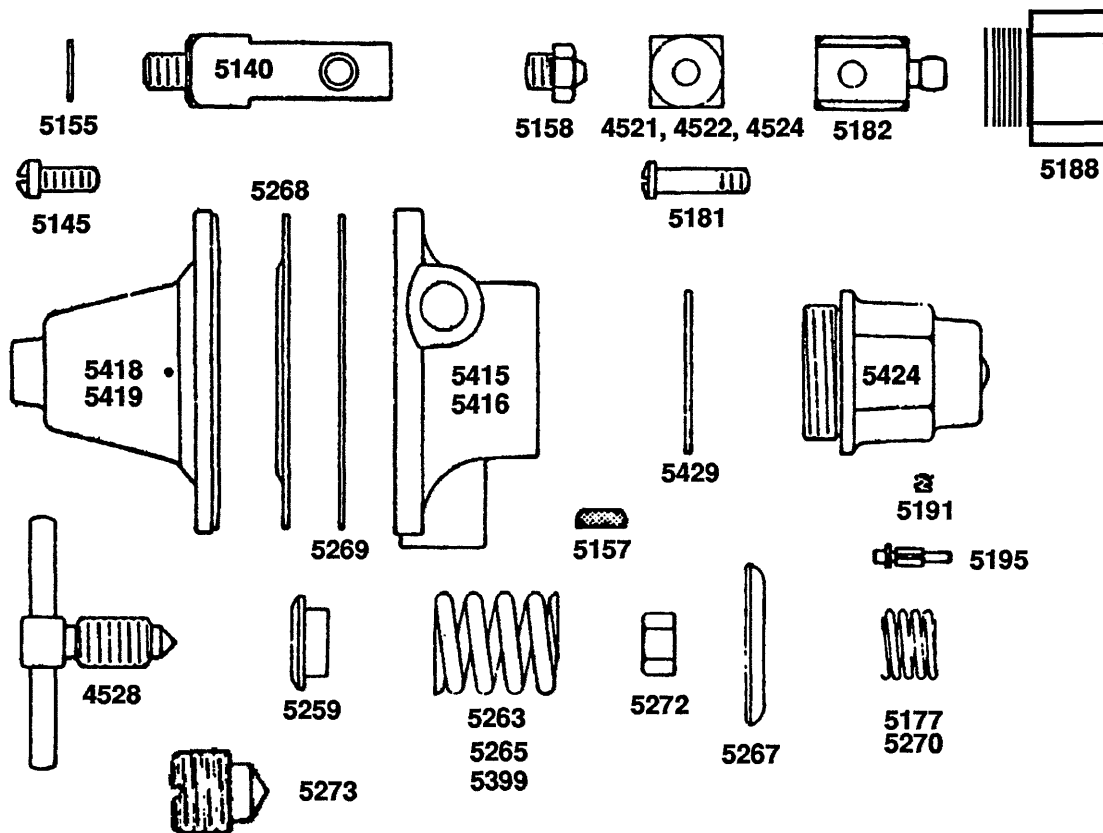
**Type P-600 Cylinder Regulator**



MFG. NO.	S-S NO.	DESCRIPTION	MFG. NO.	S-S NO.	DESCRIPTION
P-600		Cylinder Regulator	* 5272		Diaphragm Plate Nut
4507		Diaph. Yoke Assy. - 600 PSI Type	5415		Regulator Body, left hand
4521	E-004	Seat Block with White Nylon Seats for Oxygen	5421		Regulator Bonnet, long barrel 600 type
4582		Adjusting Screw 600 lb. Type	5424		Back Cap
* 5140		Yoke	5429	E-061	Back Cap Gasket, Teflon
5145	E-191	Bonnet Screw (6)			<b>Diaph. Yoke Assy. - 600 PSI type</b>
* 5155	E-056	Yoke Gasket, Teflon			
5157		Sintered Filter			
5160	E-086	Nozzle with 1/8" Orifice			
5177	E-267	Rear Spring			
5181	E-131	Yoke Clamping Screw			
5182	E-062	Yoke Guide			
5188	E-226	Body Nut			
5191	E-161	Check Valve Spring			
5195	E-162	Check Valve 1/8" Nozzle			
5259		Spring Button for 600 lb. press.			
5266		Comp. Spring for 600 lb. press.			
* 5267		Diaphragm Plate			
* 5268	E-071	Diaphragm, S.S.			
5269	E-051	Diaphragm Gasket			

# Meco

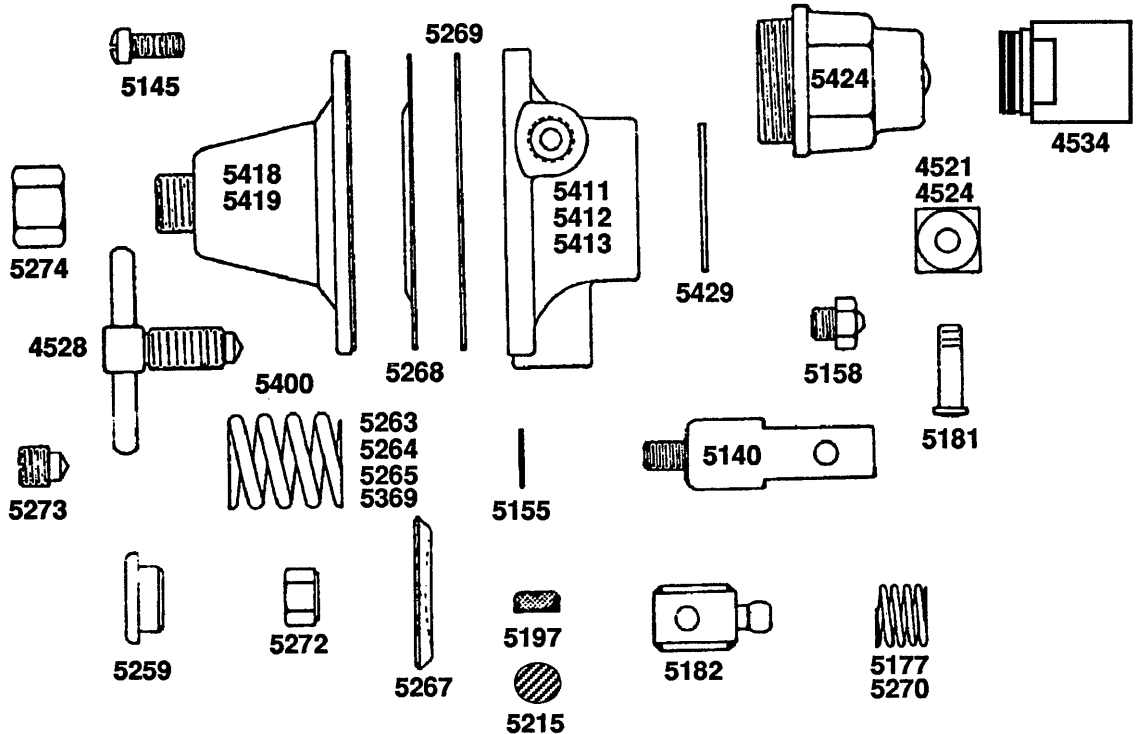
## Type P Multi-Seat Regulator



MFG. NO.	S-S NO.	DESCRIPTION	MFG. NO.	S-S NO.	DESCRIPTION
Type P		Multi-Seat Regulator	5259		Spring Button
1550		O <sub>2</sub> Outlet Bushing, not shown	5263		Comp. Spring for 20 lb. Press.
1551		Acety. Outlet Bushing, not shown	5265		Comp. Spring for 150 lb. Press.
4506		Diaphragm Yoke Assy.	5267		Diaphragm Plate
4521	E-004	Seat Block with Nylon Seats - White for Oxygen	5268	E-071	Stainless Steel Diaphragm
4522	E-072	Seat Block with Nylon Seats - Black for Acetylene	5269	E-051	Diaphragm Gasket
4524	E-224	Seat Block w/Kel-F Seats for CO <sub>2</sub>	5270	E-163	Rear Spring, Acetylene
4528	E-101	Adjusting Screw Assembly	5272		Diaphragm Plate Nut
* 5140		Yoke	5273		Slot Type Adj. Screw
5145	E-191	Bonnet Screw (6)	5274		Protection Cap for Slot Adj. Screw
* 5155	E-056	Yoke Gasket, Teflon	5399		Compression Spring for 100 PSI
5157		Sintered Filter	5416		Body, Flowmeter Type
5177	E-267	Rear Spring, Oxygen	5415		Left Hand Body, Standard
5181	E-131	Yoke Clamping Screw	5418	E-170	Bonnet, Tee Type
5182	E-062	Yoke Guide	5424		Back Cap
5188	E-226	Body Nut	5429	E-061	Back Cap Gasket
5191	E-161	Nozzle Check Valve Spring			Diaphragm Yoke Assy.
5195	E-162	Check Valve for 5/64" Nozzles			

# Meco

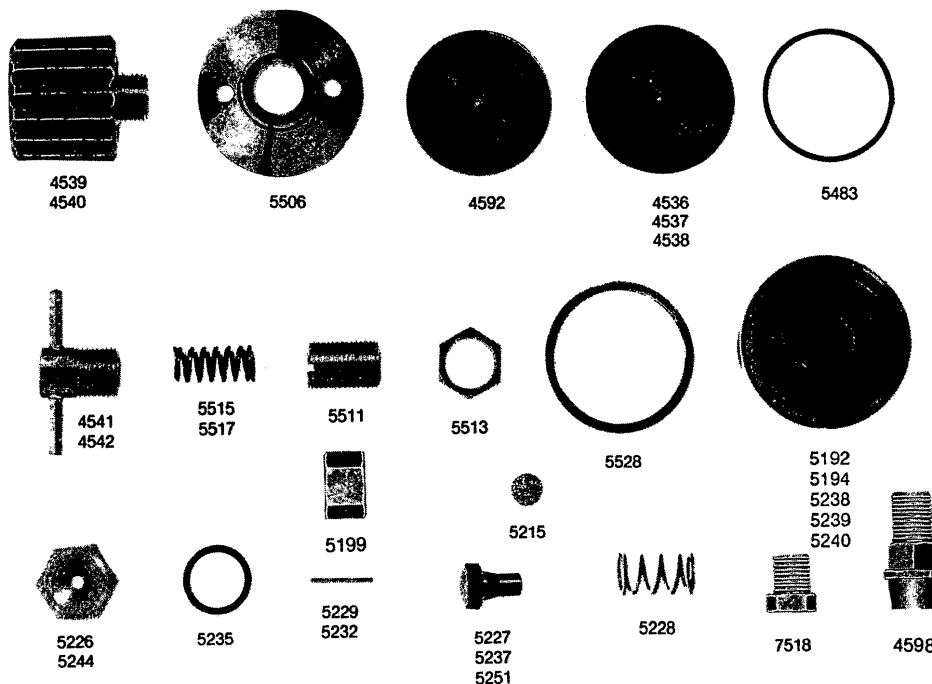
## Type P-30, -50, -125, -150, & -225 Industrial Multi-Seat Regulator



MFG. NO.	S-S NO.	DESCRIPTION	MFG. NO.	S-S NO.	DESCRIPTION
P-30, P-50, P-125, P-150, & P-225		Industrial Multi-Seat Regulator	5263		Comp. Spring for 30 lb. Press.
4506		Diaphragm - Yoke Assy.	5264		Comp. Spring for 125 lb. Press.
4521	E-004	Seat Block with White Nylon Seats, for Oxygen	5265		Compression Spring for 150 PSI
4524	E-224	Seat Block w/Kel-F Seats for CO <sub>2</sub>	* 5267		Diaphragm Plate
4528	E-101	Adjusting Screw Assembly	* 5268	E-071	Stainless Steel Diaphragm
4534		Enviro-Cap Water Heated Back Cap Assy.	5269	E-051	Diaphragm Gasket
* 5140		Yoke	* 5272		Diaphragm Plate Nut
5145		Bonnet Screw (6)	5273		Slot Type Adjusting Screw
* 5155	E-056	Yoke Gasket, Teflon	5274		Protection Cap for Slot Adj. Screw
5158	E-084	Nozzle with 5/64" Orifice	5369		Compression Spring for 50 PSI
5177		Rear Spring, for over 500 lb. Inlet Press.	5400		Compression Spring for 225 PSI
5181	E-131	Yoke Clamping Screw	5411		Body, 1 inlet, 2 outlets
5182	E-062	Yoke Guide	5412		Body, 1 inlet, 3 outlets
5197		Filter Screen	5413		Body, 2 inlets, 2 outlets
5215		Sintered Filter	5418	E-170	Bonnet for "T" type Adj. Screw
5259		Spring Button	5419		Bonnet, for Slotted Type Adjusting Screw
			5424		Back Cap
			* 5429	E-061	Back Cap Gasket, Teflon
					Diaphragm - Yoke Assy.

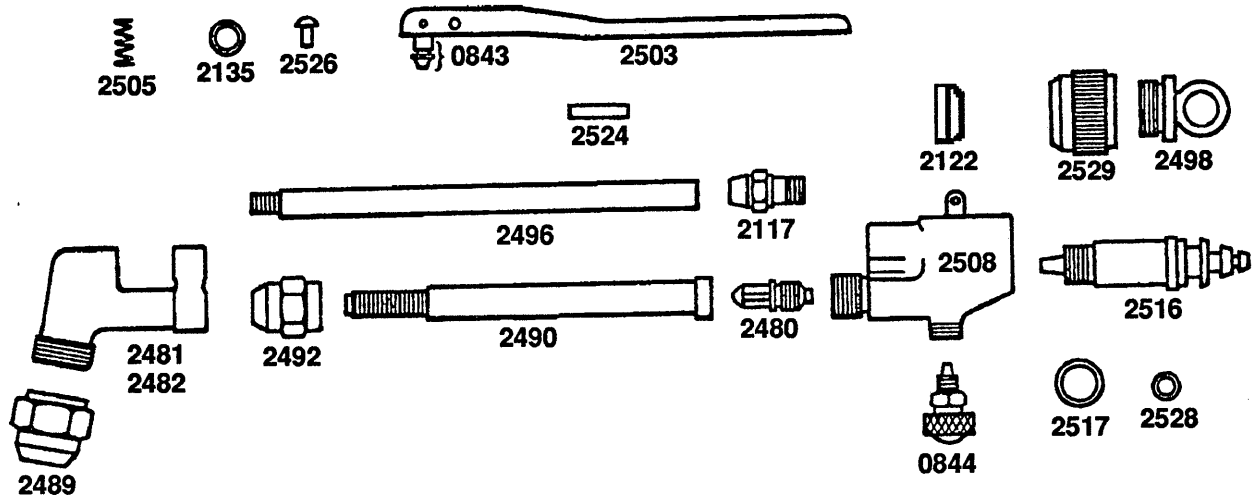
# Meco

## Type A Cylinder Regulator



MFG. NO.	S-S NO.	DESCRIPTION	MFG. NO.	S-S NO.	DESCRIPTION
4536		Type A Regulator	5229		.750" Push Off Pin for O <sub>2</sub> & Other H.P. Gases
4537	E-185	Diaphragm Assembly, Acety.	5232		.687" Push Off Pin for Low Pressure Gases
4538	E-232	Diaphragm Assembly, Oxygen	5235	E-235	Nozzle Seal O-Ring, Neoprene
4539		Diaphragm Assembly, LPG & CO <sub>2</sub>	5237	E-200	Seat Assembly, Viton
4540		Knob Adj. Screw, Acetylene	5238		Body, Industrial 1 inlet, 2 outlets
		Knob Adj. Screw, High Press. (specify gas)	5239		Body, Industrial 1 inlet, 3 outlets
4541		Tee Adj. Screw, Acetylene	5240		Body, Cylinder Type
4542		Tee Adj. Screw, High Pressure	5244		Nozzle, 1/8" Diameter, Cylinder Only
4592	E-225	Diaphragm Assembly, S.S.	5251	E-198	Seat Assy., Neoprene for O <sub>2</sub> , Etc.
4598		Relief Valve 110-Set	5483	E-231	Diaphragm Seal O-Ring
5192		Body, Industrial, 2 Inlets, 2 Outlets, A-1-B	5506		Bonnet, brass
5194		Body, Cylinder Type less RV Port for Fuel Gases	5511		Adjusting Screw, slot type
5199		Cap Nut, Brass, for Slot Adj. Screw	5513		Adjusting Screw, lock nut
5215	E-258	Sintered Filter	5515		Bonnet Spring, (15 PSI)
5226		Nozzle 5/32 Industrial Only	5517		Bonnet Spring, (60 PSI)
5227	E-199	Seat Assy., Buna-N, for LPG & CO <sub>2</sub>	5528	E-207	Friction Washer
5228		Seat Spring	7518		Gauge Hole Plug 1/4" NPTM

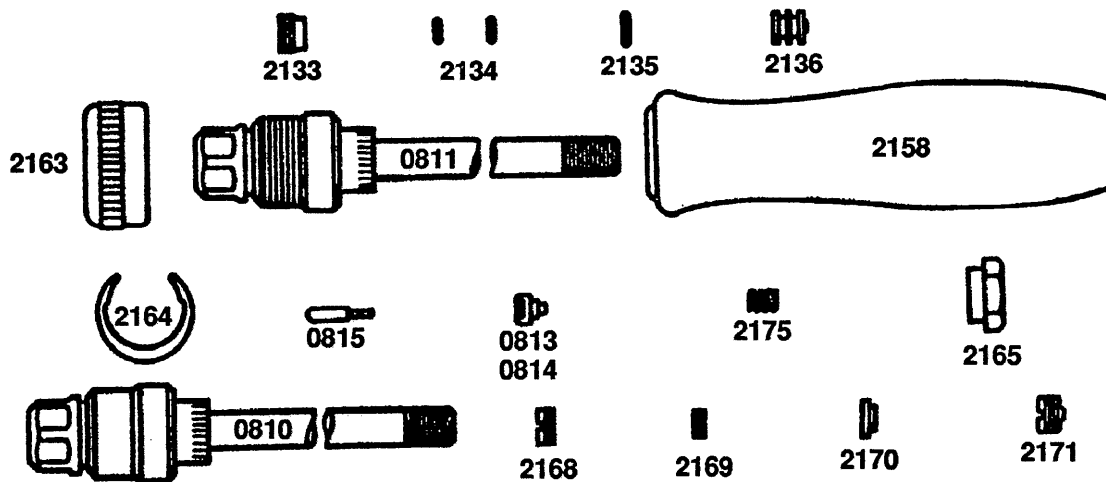
## Han-Tite Aviator Jet Cutting Attachment



MFG. NO.	S-S NO.	DESCRIPTION	MFG. NO.	S-S NO.	DESCRIPTION
		Han-Tite Aviator Jet Cutting Attachment	2517		Union Shank Seal (Large O-Ring)
			2524		Top Lever Poppet Valve Lever Pin (2)
0832		75° Cutting Head Assy. MP	2526	E-202	Poppet Valve Spring Button
0833		90° Cutting Head Assy. MP	2528		Union Shank Seal (Small O-Ring)
0843	E-135	Poppet Valve Seat Assembly	2529		Union Attachment Nut
0844		Valve Stem & Pkg. Nut Assy.	* 0832		75° Cutting Head Assy. MP
2117	E-123	High Pressure Tube Gland Nut	* 0833		90° Cutting Head Assy. MP
2122		Cutting Attachmt. Tube Packing			
2135		Poppet Valve Seat Assy. O-Ring			
2480		Medium Pressure Mixer			
* 2481		Cutting Head 90 degree			
* 2482		Cutting Head 75 degree			
2489	E-026	Cutting Head Nut			
* 2490		Mixer Gas Tube			
* 2492		Mixer Gas Tube Nut			
* 2496		High Pressure Oxygen Tube			
2498		Protector Cap			
2503		Poppet Valve Lever			
2505		Poppet Valve Spring			
2508		Valve Body			
2516		Union Shank			

# Meco

## Super Jiffy Torch



MFG. NO.	S-S NO.	DESCRIPTION	MFG. NO.	S-S NO.	DESCRIPTION
		Super Jiffy Torch	2136		Poppet Valve Nozzle
0810		Valve Body (old style)	2158		Handle
0811		Valve Body Assembly	2163		Gas Control Ring
0813		Poppet Valve Seat Assy., Acety.	2164		Retaining Ring
0814		Poppet Valve Seat Assy., LPG Gas	2165		Handle Retaining Nut
0815		Adjusting Stem Assembly	2168		Packing Gland (old style)
2133		Packing Gland	2169		Valve Stem Packing (old style)
2134		Valve Stem Seal (2)	2170		Packing Washer (old style)
2135		Poppet Valve Nozzle Seal	2171		Poppet Valve Nozzle (old style)
			2175		Poppet Valve Spring











•

•

•

•

•

•

•

















