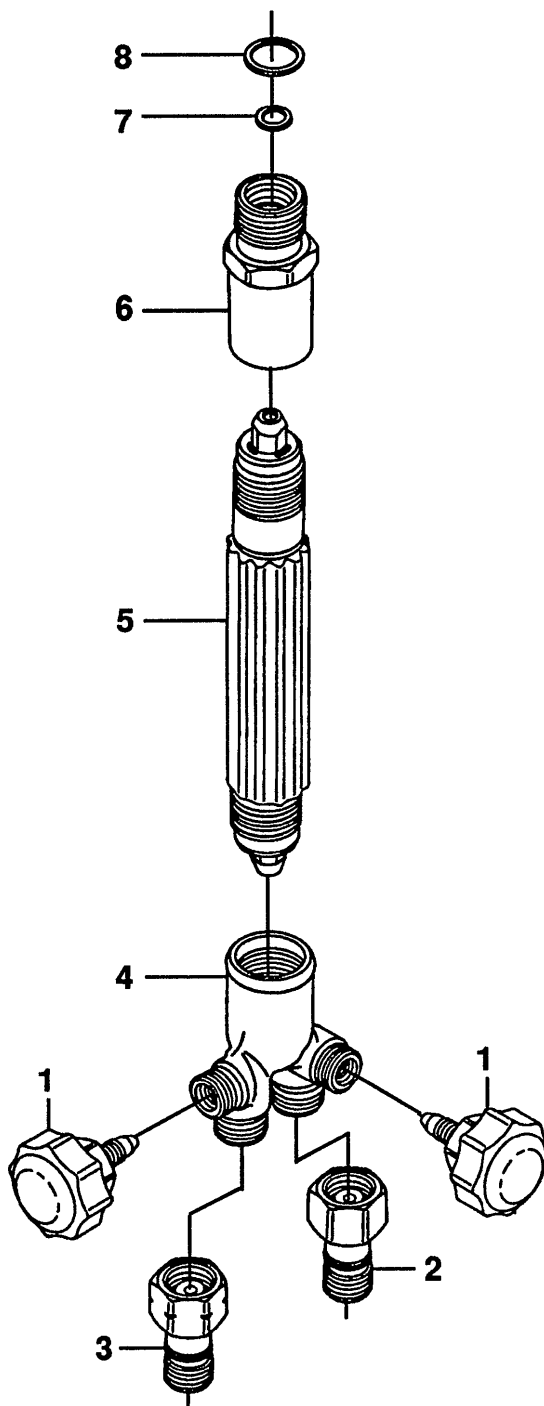


Rego/Rexarc

Models HWP 1000 & HWP 2000

Torch Handle

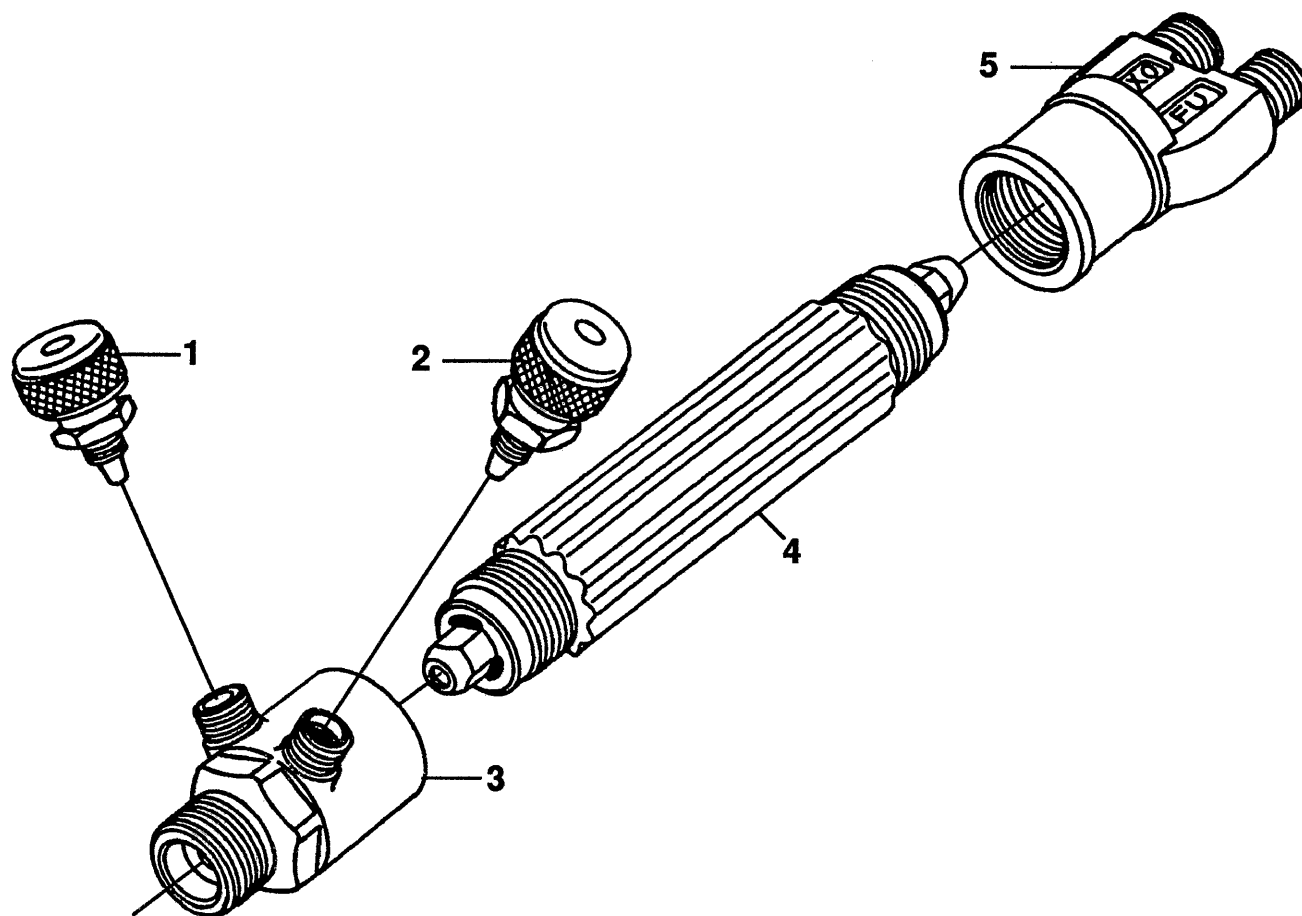


REF. NO.	MFG. NO.	S-S NO.	DESCRIPTION	CODE	REF. NO.	MFG. NO.	S-S NO.	DESCRIPTION	CODE
	HWP 1000		Torch Handle, Old GX	A	5	3754-29G		Handle Assembly	A
	HWP 2000		Torch Handle, Old SX	B		3819-29G		Handle Assembly	B
1	936-15A		Stem Assembly (2)	A, B	6	3754-6	R-100	Head	A, B
2	ACG 801		Check Valve, Oxygen	A, B	7	3754-52	R-040	Gasket, Fuel	A, B
3	ACG 802		Check Valve, Fuel	A, B	8	3754-53		Gasket, Oxygen	A, B
4	3754-3G	R-099	Valve Body	A, B					

Rego/Rexarc

Model HWP 3000

Torch Handle

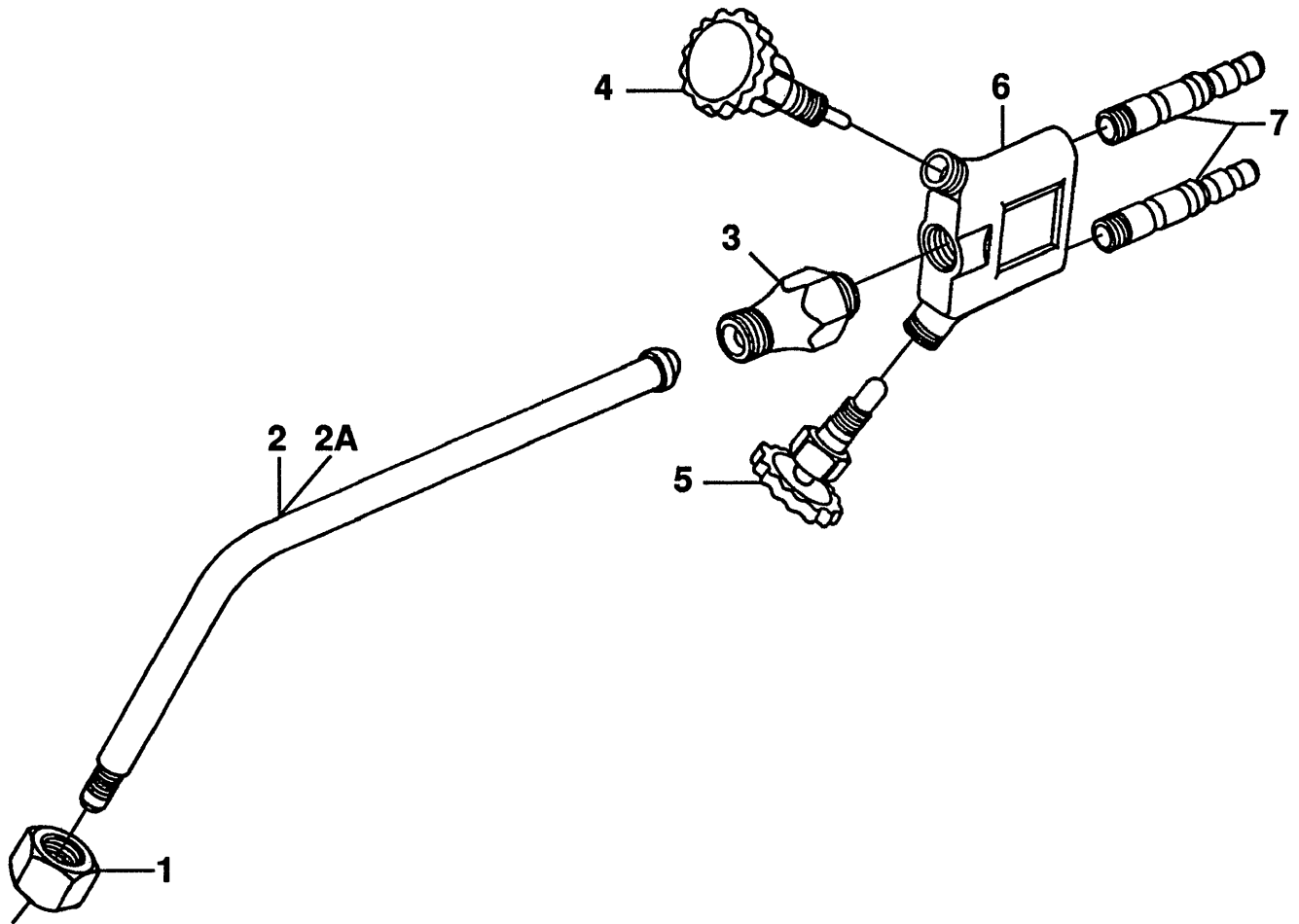


REF. NO.	MFG. NO.	S-S NO.	DESCRIPTION	CODE	REF. NO.	MFG. NO.	S-S NO.	DESCRIPTION	CODE
	HWP 3000		Torch Handle, Old LXG						
1	830-75A		Needle Valve (Oxygen)						
2	831-75A	R-049	Needle Valve (Fuel)						
3			Needle Valve Body - Not Available						
4			Torch Handle - Not Available						
5			Torch Base - Not Available						

Rego/Rexarc

Model 42

Light Duty Torch

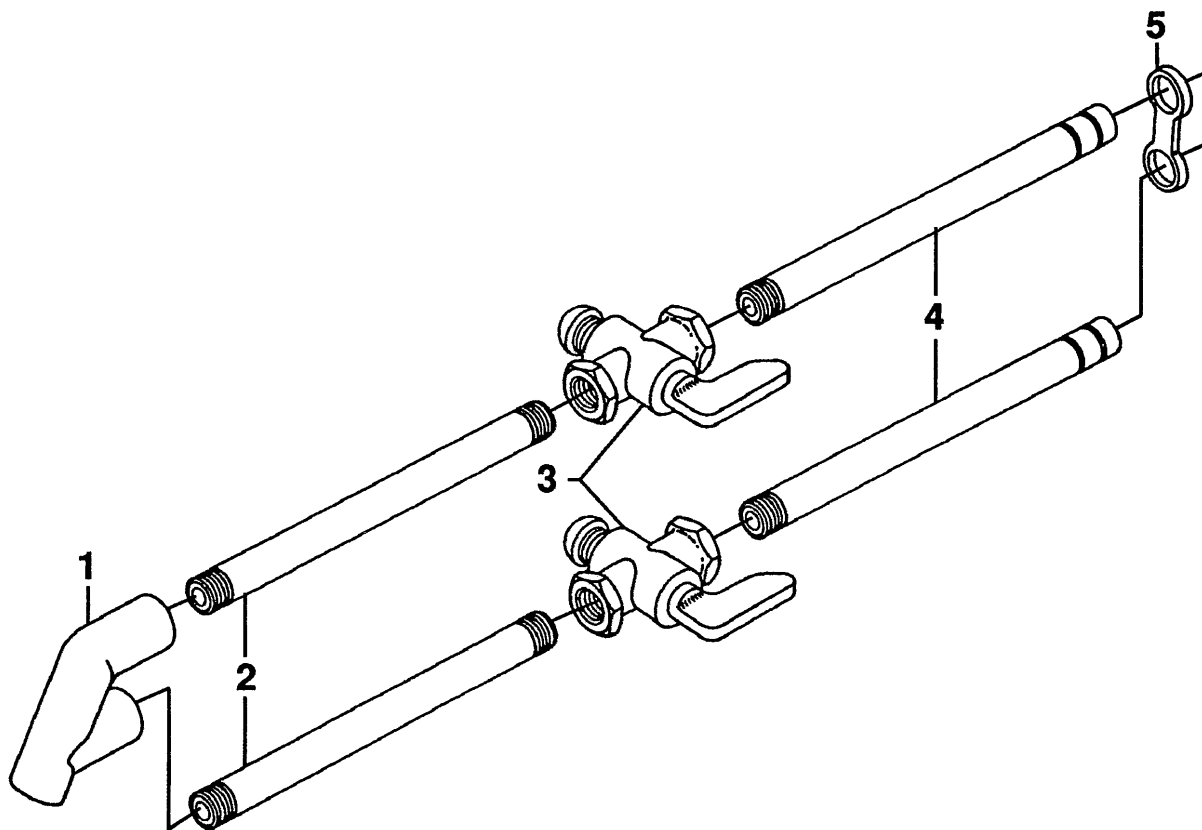


REF. NO.	MFG. NO.	S-S NO.	DESCRIPTION	CODE	REF. NO.	MFG. NO.	S-S NO.	DESCRIPTION	CODE
42			Light Duty Torch		5	NH-31	R-138	Valve Stem Assembly, Gas	
1	H-19		Coupling Nut		6	NH-15		Body	
2	H-17C	R-132	60 Degree Gooseneck		7	H-23		Tailpiece (2)	
2A	H-17B		90 Degree Gooseneck						
3	H-16		Mixing Chamber						
4	NH-30	R-137	Valve Stem Assembly, Oxygen						

Rego/Rexarc

Model A-1

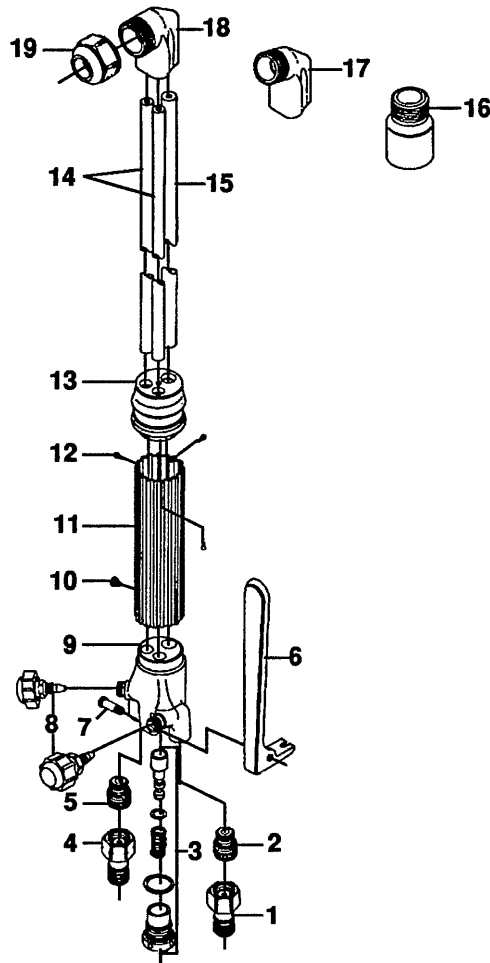
Light Duty Torch



REF. NO.	MFG. NO.	S-S NO.	DESCRIPTION	CODE	REF. NO.	MFG. NO.	S-S NO.	DESCRIPTION	CODE
	A-1		Light Duty Torch						
1	A1-1		Head						
2	A1-8		Head Conn. Tubing (2)						
3	A1-9		Cock Assembly (2)						
4	A1-10		Hose Conn. Tubing (2)						
5	A1-7		Bracket						

Rego/Rexarc

Models CWP 7519, CWP 7536, CWP 9019, CWP 9036, CWP 18019, CWP 18036 Hand Cutting Torches

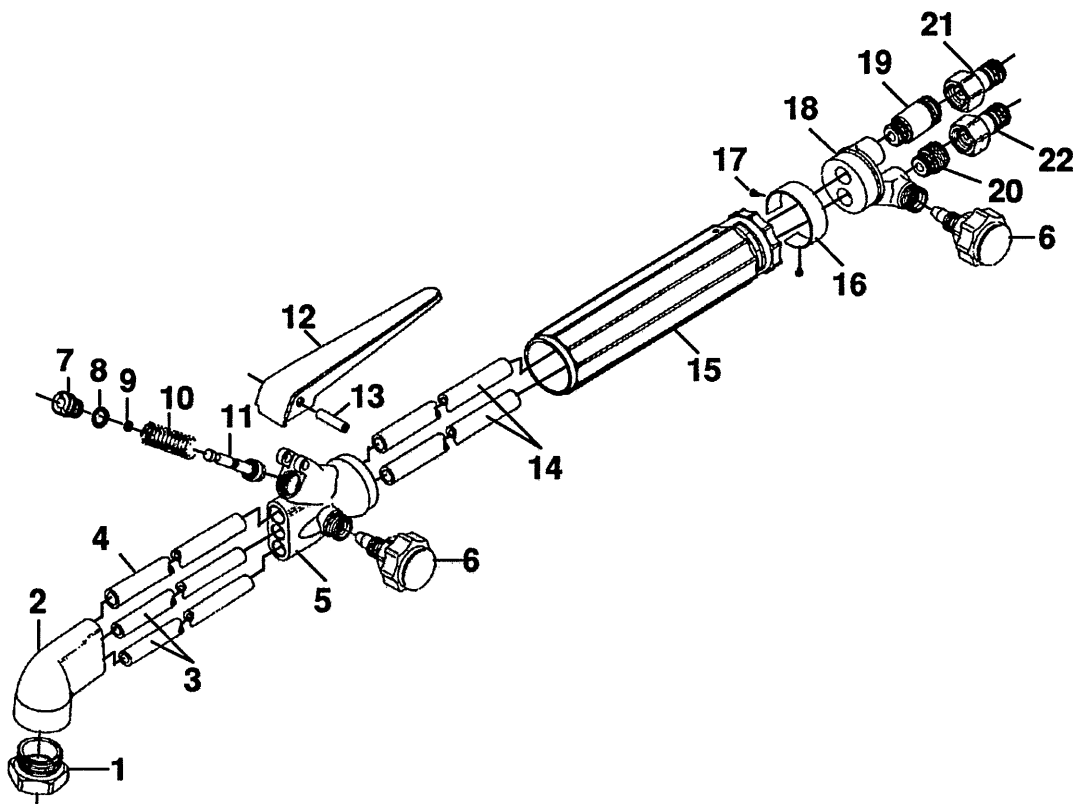


REF. NO.	MFG. NO.	S-S NO.	DESCRIPTION	CODE	REF. NO.	MFG. NO.	S-S NO.	DESCRIPTION	CODE
	CWP 7519		Hand Cutting Torch, Old KX 75B-19	A	7	3763-20	R-042	Lever Screw	A thru F
	CWP 7536		Hand Cutting Torch, Old KX 75B-36	B	8	938P-11A	R-043	Valve Stem Assembly (2)	A thru F
	CWP 9019		Hand Cutting Torch, Old KX 90B-19	C	9	4978-11		Body	A thru F
	CWP 9036		Hand Cutting Torch, Old KX 90B-36	D	10	GM-7	R-074	Handle Screw	A thru F
	CWP 18019		Hand Cutting Torch, Old KX 180S-19	E	11	3978-8A		Handle	A thru F
	CWP 18036		Hand Cutting Torch, Old KX 180S-36	F	12	4278-10		Screw (3)	A thru F
					13	4978-6A		Handle Cap	A thru F
					14	3978-7		Tube LP Oxygen & LP Fuel (2)	A, C, E
						3978-7B		Tube LP Oxygen & LP Fuel (2)	B, D, F
					15	4978-7		Tube High Pressure Oxygen	A, C, E
						4978-7B		Tube High Pressure Oxygen	B, D, F
	1	ACG 801	Check Valve, Oxygen	A thru F	†16	4978-55A		Head, 180°	E, F
	* 2	3763-21	Nipple	A thru F	†17	4278-2A		Head, 75°	A, B
	* 3	000754-75A	High Pressure Oxygen Valve Assembly	A thru F	†18	4278-1A		Head, 90°	C, D
	4	ACG 802	Check Valve, Fuel	A thru F	19	4278-21	R-045	Tip Nut	A thru F
	* 5	3763-22	Nipple	A thru F	*		R-081	Included in Repair Kit KX-80	
	6	3763-19	Valve Lever	A thru F	†			Reseat After Brazing	

Rego/Rexarc

Model CWP 8720

Hand Cutting Torch

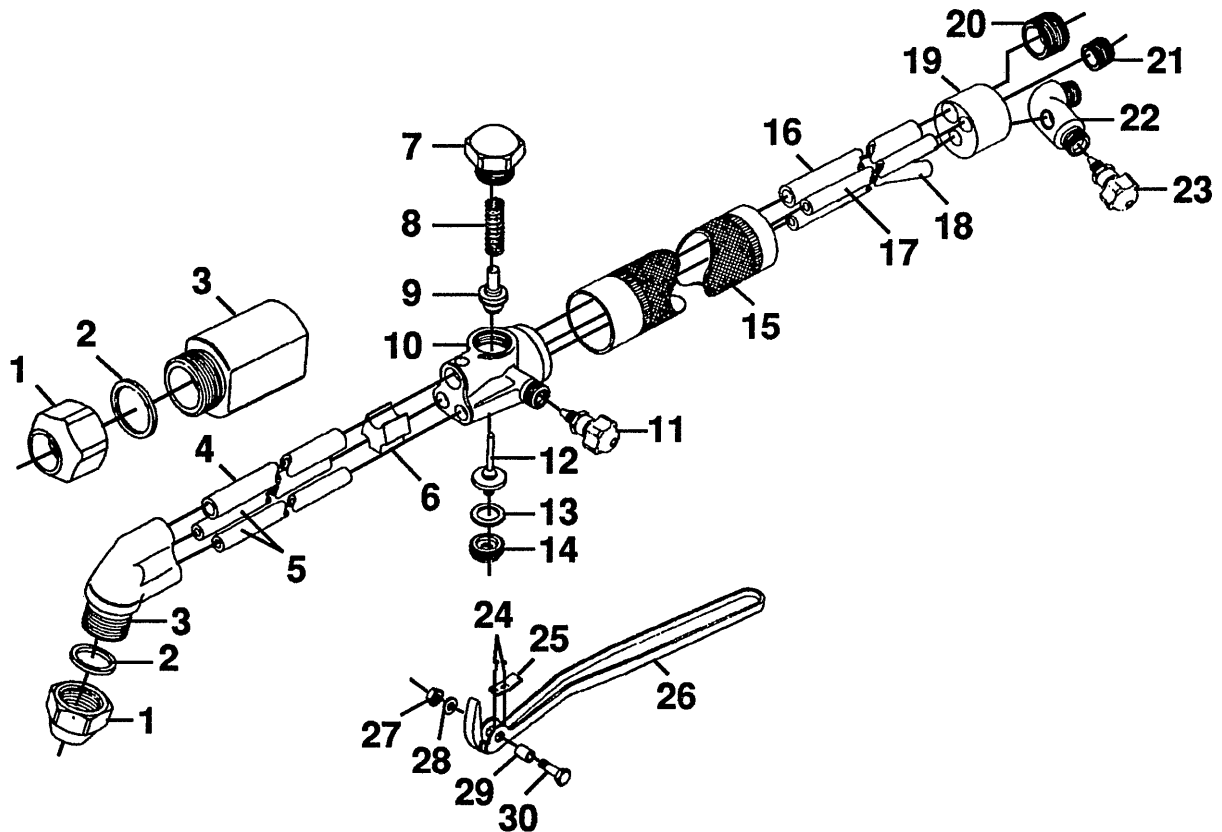


REF. NO.	MFG. NO.	S-S NO.	DESCRIPTION	CODE	REF. NO.	MFG. NO.	S-S NO.	DESCRIPTION	CODE
	CWP 8720		Hand Cutting Torch, Old THD 87B-20A		11	5449-14		Valve Stem & Seat Disc Assembly	
1	THD 87B-1		Tip Nut		12	THD 87B-5A		Valve Lever Assembly	
2	5449-16		Head		13	THD 87B-25A		Pin	
3	5449-10SS		Tube, Gas (2)		14	5449-9		Gas Tube (2)	
4	5449-11SS		Tube, High Pressure, Oxygen		15	5449-4		Handle Tube	
5	5449-1A		Body		16	THD 87B-3		Nameplate	
6	936-15A		Stem Assembly (2)		17	4978-35		Mounting Screw (2)	
7	5449-12		Retainer		18	5449-2		Base	
8	835-75A	R-124	O-Ring		19	3763-21L		Oxygen Nipple	
9	A 8610-35		O-Ring		20	3763-22	R-103	Fuel Nipple	
10	9151-27		Spring		21	ACG 801		Check Valve (Oxygen)	
					22	ACG 802		Check Valve (Fuel)	

Rego/Rexarc

Models 78, 78A

Hand Cutting Torches

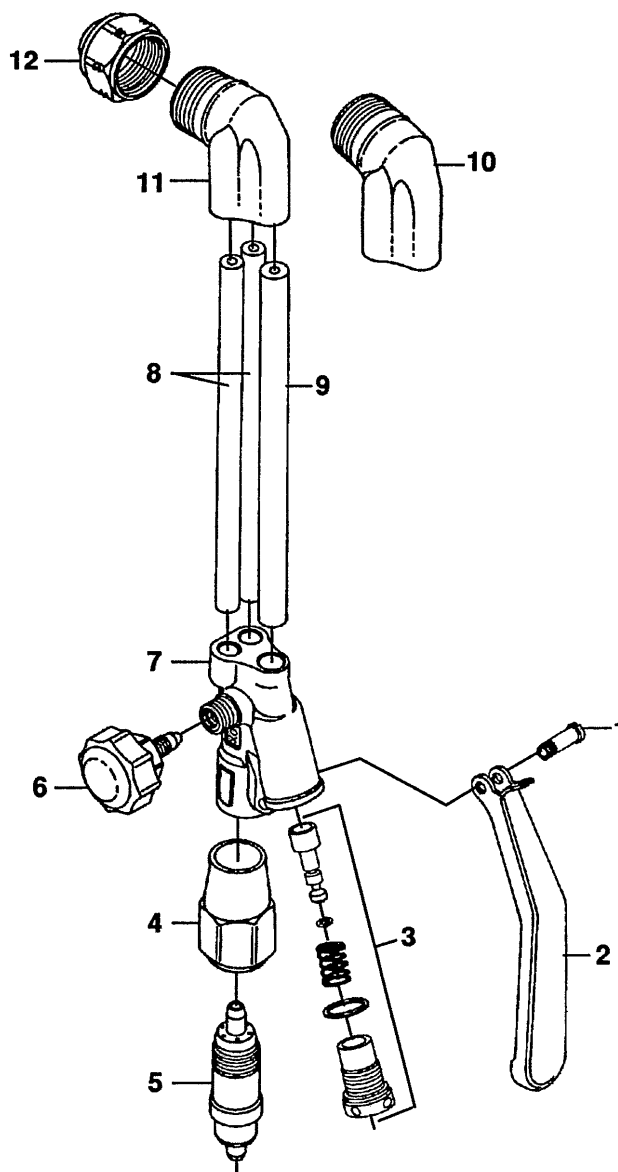


REF. NO.	MFG. NO.	S-S NO.	DESCRIPTION	CODE	REF. NO.	MFG. NO.	S-S NO.	DESCRIPTION	CODE
	78		Hand Cutting Torch	A	13	37009-74		Ring	A, B
	78A		Hand Cutting Torch	B	14	37013-74		Diaphragm Cap	A, B
1	37056-74		Tip Nut, 3/4" Tip	A	15	37052-74		Handle Tube	A, B
	37025-74		Tip Nut, 3/4" Tip	B	16	26127-74		Tube, (H.P. Oxygen)	A
1A	37057-74		Tip Nut, 1" Tip	A		16468-74		Tube, (H.P. Oxygen)	B
	37086-74		Tip Nut, 1" Tip	B	17	26126-74		Tube, (L.P. Oxygen)	A
2	37080-74		Tip Ring, 3/4" Tip	A, B	18	26128-74		Tube, (Acetylene)	A
2A	37058-74		Tip Ring, 1" Tip	A, B		37049-74		Tube, (Acetylene)	B
3	19589-74		Head	A	19	26129-74		Base	A
	37024-74		Head	B		19608-74		Base	B
4	19590-74		Tube, (H.P. Oxygen)	A	20	26124-74		Bushing	A
	78014-74		Tube, (H.P. Oxygen)	B		16465-74		Bushing	B
5	17740-74		Tube, (L.P. Oxygen & Acet.) (2)	A	21	26125-74		Bushing	A
	78013-74		Tube, (L.P. Oxygen & Acet.) (2)	B	22	26130-74		Valve Body	A
6	16463-74		Tube Strut	A, B		532010-74		Valve Body	B
7	16457-74		Cap Screw	A, B	23	26130-74		Valve Stem Assembly	A
8	37012-74A		Spring	A, B		71045-74		Valve Stem Assembly	B
9	17060-74		Plunger Assembly	A, B	24	4278-11		Screw (2)	A, B
10	19610-74		Body	A	25	37014-74		Bearing Plate	A, B
	16456-74		Body	B	26	37062-74		Lever	A, B
11	71043-74		Valve Stem Assembly	A, B	27	14247-73		Nut	A, B
12	37084-74		Rod Assembly	A, B	28	37064-74		Lock Washer	A, B
					29	37083-74		Bearing	A, B
					30	37017-74		Screw	A, B

Rego/Rexarc

Models KXA-75, KXA-90, SXA-75 & SXA-90

Cutting Attachments

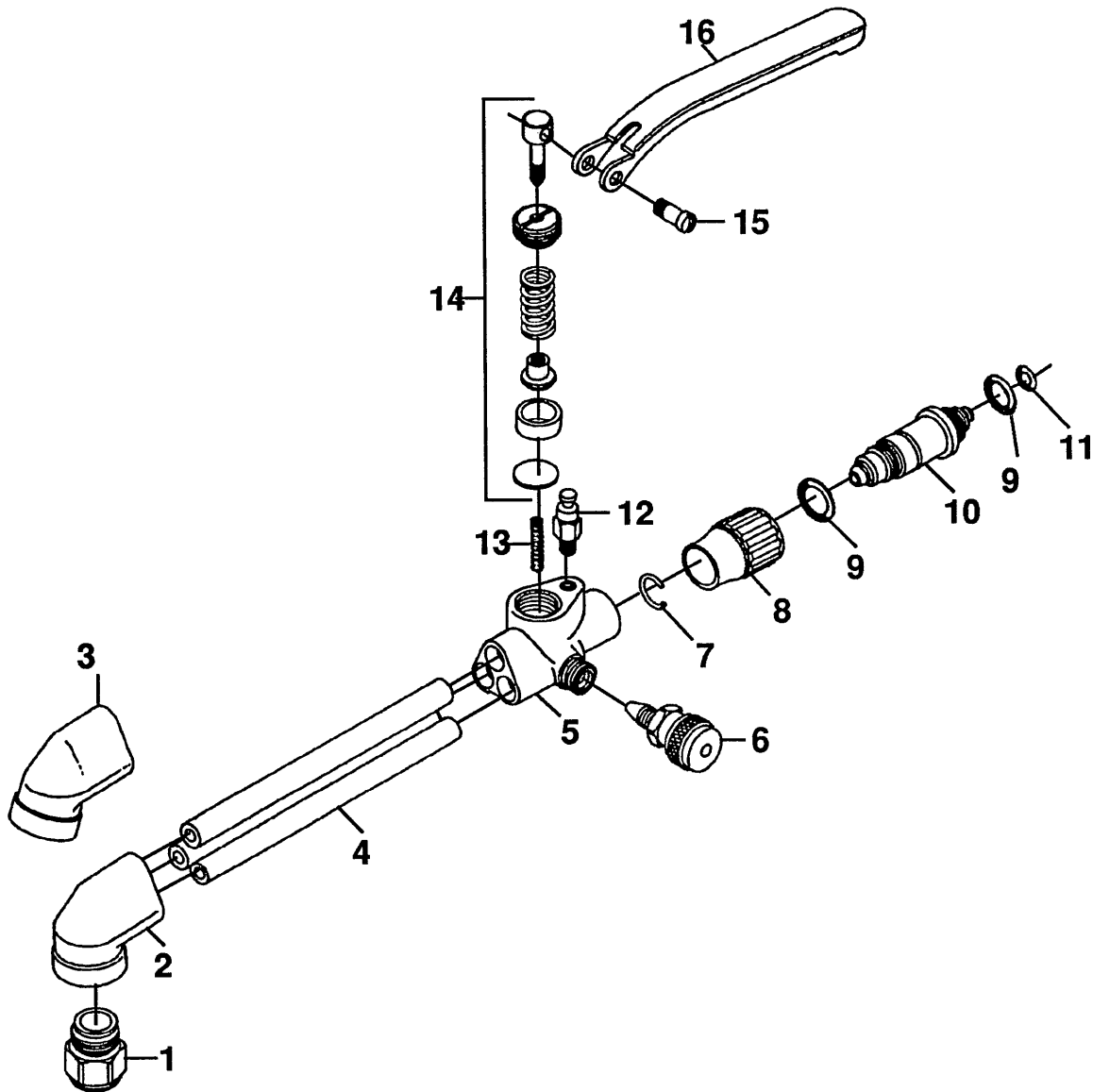


REF. NO.	MFG. NO.	S-S NO.	DESCRIPTION	CODE	REF. NO.	MFG. NO.	S-S NO.	DESCRIPTION	CODE
	KXA-75		Cutting Attachment	A	7	5503-1		Valve Body	A thru D
	KXA-90		Cutting Attachment	B	8	5503-7		Tube, Fuel (2)	A, B
	SXA-75		Cutting Attachment	C		000693-75		Tube, Fuel (2)	C, D
	SXA-90		Cutting Attachment	D	9	5503-8		Tube, Oxygen	A, B
1	3763-20	R-042	Lever Screw	A thru D		000694-75		Tube, Oxygen	C, D
2	5503-19SS	R-119	Valve Lever	A thru D	†10	4278-2A		75 Degree Head	A, C
* 3	000754-75A		High Pressure Oxygen Valve Assy.	A thru D	†11	4278-1A	R-045	90 Degree Head	B, D
					12	4278-21	R-081	Tip Nut	A thru D
4	5502-3	R-108	Connector Nut	A thru D	*			Included In Repair Kit KXA-80	
5	5502-2	R-107	Connector Plug	A thru D	†			Reset After Brazing	
* 6	938P-11A	R-043	Stem Assembly	A thru D					

Rego/Rexarc

Models LXA-75 & LXA-90

Cutting Attachments

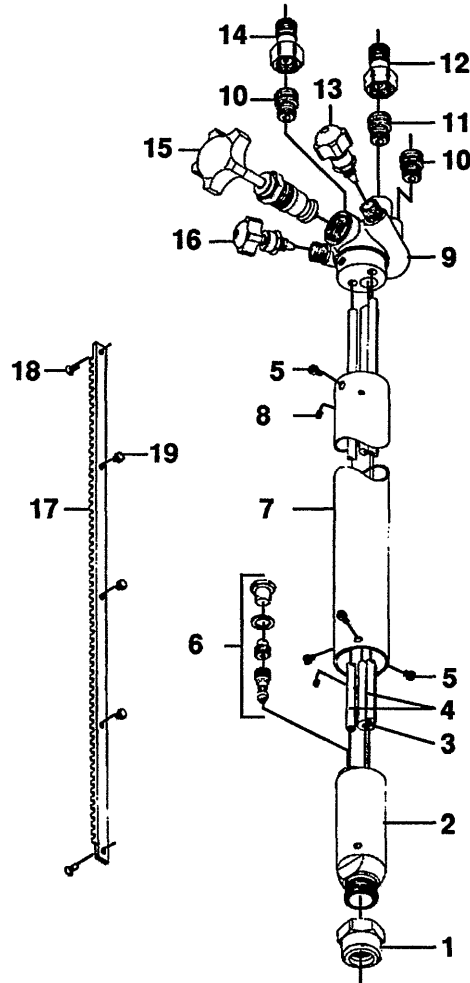


REF. NO.	MFG. NO.	S-S NO.	DESCRIPTION	CODE	REF. NO.	MFG. NO.	S-S NO.	DESCRIPTION	CODE
	LXA-75		Cutting Attachment	A	10	839-75		Adapter	A, B
	LXA-90		Cutting Attachment	B	*11	RWP 1101-20	R-122	O-Ring	A, B
† 1	837-75A		Tip Nut	A, B	12	48020-74A		Pivot Pin	A, B
† 2	841-75		90 Degree Head	B	13	48099-74		Spring	A, B
† 3	840-75		75 Degree Head	A	*14	48019-74		H. P. Valve Assembly	A, B
4	693-75		Tube (3)	A, B	15	3763-20	R-042	Lever Screw	A, B
5	838-75		Body	A, B	16	48007-74A		Lever Screw	A, B
* 6	831-75A	R-049	Needle Valve Assembly	A, B				H. P. Valve Lever	A, B
7	836-75A		Retaining Ring	A, B	*			Included in Repair Kit LXA-80	
8	834-75		Nut, Mixer	A, B	†			Reseat After Brazing	
* 9	835-75A	R-124	O-Ring (2)	A, B					

Rego/Rexarc

Models CWP 6008 & CWP 6116

Machine Cutting Torches

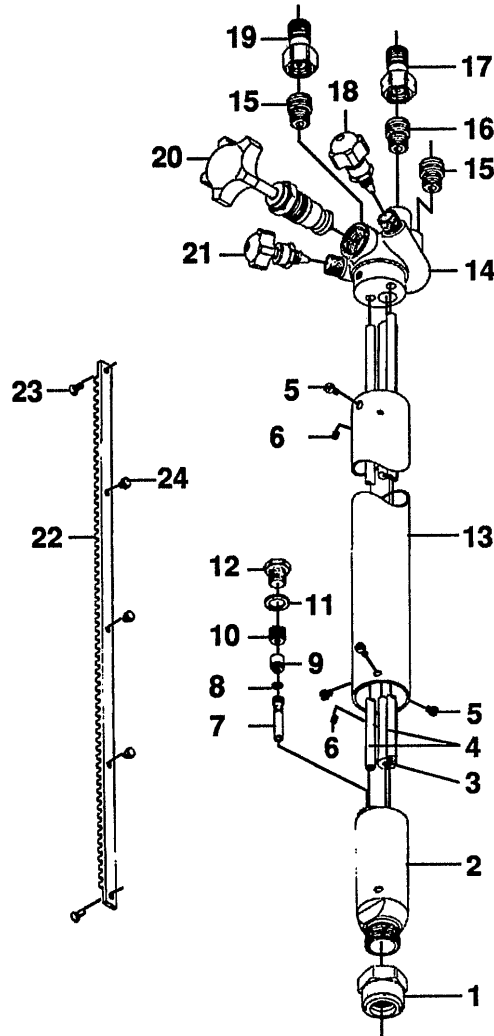


REF. NO.	MFG. NO.	S-S NO.	DESCRIPTION	CODE	REF. NO.	MFG. NO.	S-S NO.	DESCRIPTION	CODE
	CWP 6008		Machine Cutting Torch, Old 60-8	A	13	071045-74		Stem Assembly, Fuel	A, B
	CWP 6116		Machine Cutting Torch, Old 61-16	B	14	ACG 801		Check Valve, Oxygen	A, B
1	027519-74		Tip Nut	A, B	15	000743-75A		High Pressure Valve Assy.	A, B
* 2	027541-74		Head	A, B	16	071043-74		Stem Assembly, Oxygen	A, B
3	013859-74		Tube, High Pressure Oxygen	A	†17	71076-74		Torch Rack	A
	073051-74		Tube, High Pressure Oxygen	B	†	71078		Torch Rack	B
4	013857-74		Tube, L. P., O ₂ & Fuel (2)	A	18	025423-71		Flat Head Machine Screw (2)	A, B
	073049-74		Tube, L. P., O ₂ & Fuel (2)	B	19	071065-74		Screw (1)	A
5	071053-74A		Screw (4)	A, B	*	071065-74		Screw (3)	B
6	029564-74		Mixer Assy., Equal Pressure	A, B	†			Reseat After Brazing	
7	071052-74		Handle Tube	A				Includes Items 18 & 19	
	071072-74		Handle Tube	B					
8	071075-74		Screw (2)	A, B					
9	070001-74-1		Valve Body	A, B					
10	3763-21	R-102	Nipple, Oxygen	A, B					
11	3763-22	R-103	Nipple, Fuel	A, B					
12	ACG 802		Check Valve, Fuel	A, B					

Rego/Rexarc

Models CWP 6608, CWP 6716

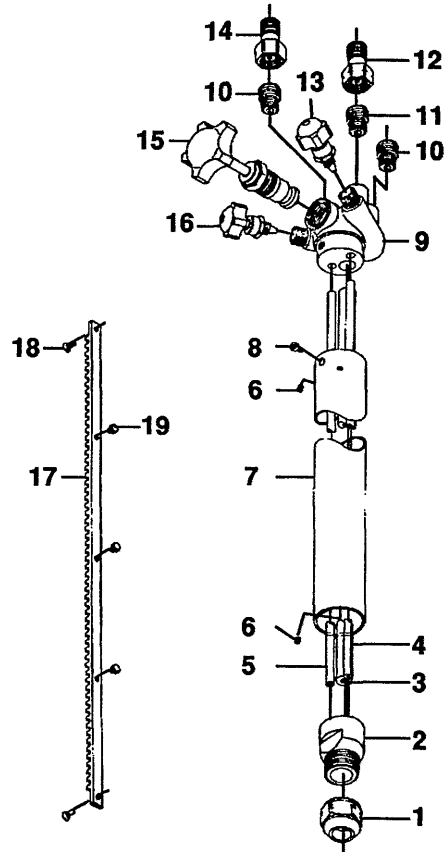
Machine Cutting Torches



REF. NO.	MFG. NO.	S-S NO.	DESCRIPTION	CODE	REF. NO.	MFG. NO.	S-S NO.	DESCRIPTION	CODE
	CWP 6608		Machine Cutting Torch, Old 66-8	A	14	070001-74 071001-74-1		Body	A
	CWP 6716		Machine Cutting Torch, Old 67-16	B	15	3763-21	R-102	Body	B
					16	3763-22	R-103	Nipple, Oxygen	A, B
1	027519-74		Tip Nut	A, B	17	ACG 802		Nipple, Fuel	A, B
* 2	027541-74		Head	A, B	18	071045-74		Check Valve, Fuel	A, B
3	013859-74		Tube, Oxygen High Pressure	A	19	ACG 801		Stem Assy., Acetylene	A, B
	073051-74		Tube, Oxygen High Pressure	B	20	000743-75A		Check Valve, Oxygen	A, B
4	013857-74		Tube, Oxygen & Acetylene	A	21	071043-74		High Pressure Valve Assy.	A, B
	073049-74		Tube, Oxygen & Acetylene	B	†22	71076-74		Stem Assy., L. P. Oxygen	A, B
5	071053-74A		Screw (4)	A, B		71078		Torch Rack	A
6	071075-74		Screw, Setting (2)	A, B	23	025423-71		Torch Rack	B
7	029942-74		Throat	A, B	24	071065-74		Flat Head Machine Screws (2)	A, B
8	FC 8105V		O-Ring	A, B		071065-74		Screw (1)	A
9	029943-74		Injector	A, B	*			Screw (3)	B
10	027524-74		Locknut	A, B	†			Reseat After Brazing	
11	027702-74		Gasket (Injector)	A, B				Includes Items 24 & 25	
12	027599-74		Cap Screw (Injector)	A, B					
13	071052-74		Tube Handle	A					
	071072-74		Tube Handle	B					

Rego/Rexarc

Models CWP 6808, CWP 6908,
CWP 6912 & CWP 6916
Machine Cutting Torches

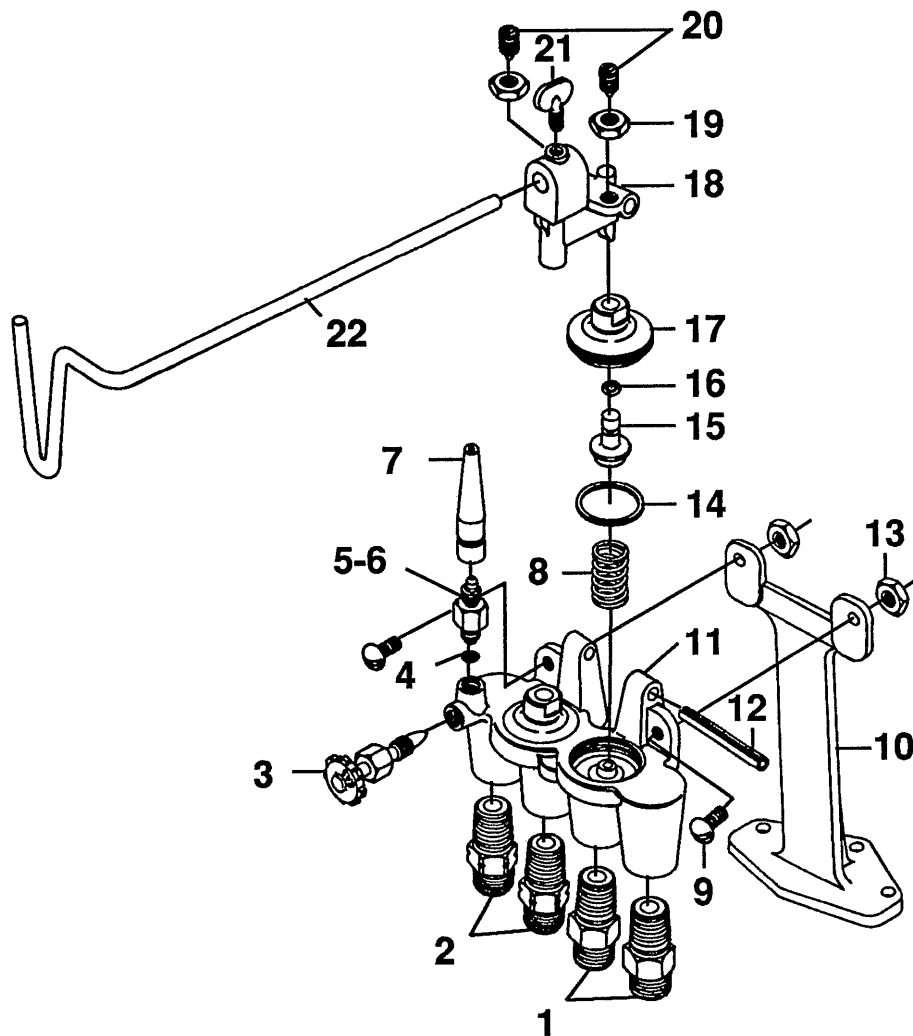


REF. NO.	MFG. NO.	S-S NO.	DESCRIPTION	CODE	REF. NO.	MFG. NO.	S-S NO.	DESCRIPTION	CODE
	CWP 6808	R-081	Machine Cutting Torch, Old 68-8	A		071072-74	R-102 R-103	Tube Handle	D
	CWP 6908		Machine Cutting Torch, Old 69-8	B		8 071053-74A		Screw	A thru D
	CWP 6912		Machine Cutting Torch, Old 69-12	C		9 070001-74		Body	A
	CWP 6916		Machine Cutting Torch, Old 69-16	D		071001-74-1		Body	B, C, D
† 1	4278-21		Tip Nut	A thru D		10 3763-21		Nipple, Oxygen	A thru D
† 2	068002-74-1		Head	A thru D		11 3763-22		Nipple, Fuel	A thru D
3	068051-74		Tube, High Pressure Oxygen	A, B		12 ACG 802		Check Valve, Fuel	A thru D
	068067-74		Tube, High Pressure Oxygen	C		13 071045-74		Stem Assy., Acetylene Valve	A thru D
	068071-74		Tube, High Pressure Oxygen	D		14 ACG 801		Check Valve, Oxygen	A thru D
4	068049-74		Tube, Acetylene	B		15 00743-75A		High Pressure Valve Assy.	A thru D
	068086-74		Tube, Acetylene	C		16 071043-74		Stem Assy., L. P. O ₂ Valve	A thru D
	068069-74		Tube, Acetylene	D		**17 71076-74		Torch Rack	A, B
* 5	068049-74		Tube, L. P. Oxygen	A, B		** 71077-74		Torch Rack	C
	068086-74		Tube, L. P. Oxygen	C		** 71078		Torch Rack	D
	068069-74		Tube, L. P. Oxygen	D		18 025423-71		Flat Head Machine Screw (2)	A thru D
6	071075-74		Screw (Setting) (2)	A thru D		19 071065-74		Screw (1)	A, B
7	071052-74		Tube Handle	A, B		071065-74		Screw (2)	C
	071068-74		Tube Handle	C		071065-74		Screw (3)	D
						*		Two Required for CWP 6908	
						†		Reseat After Brazing	
						**		Includes Items 18 & 19	

Rego/Rexarc

Model 4360A

Economizer

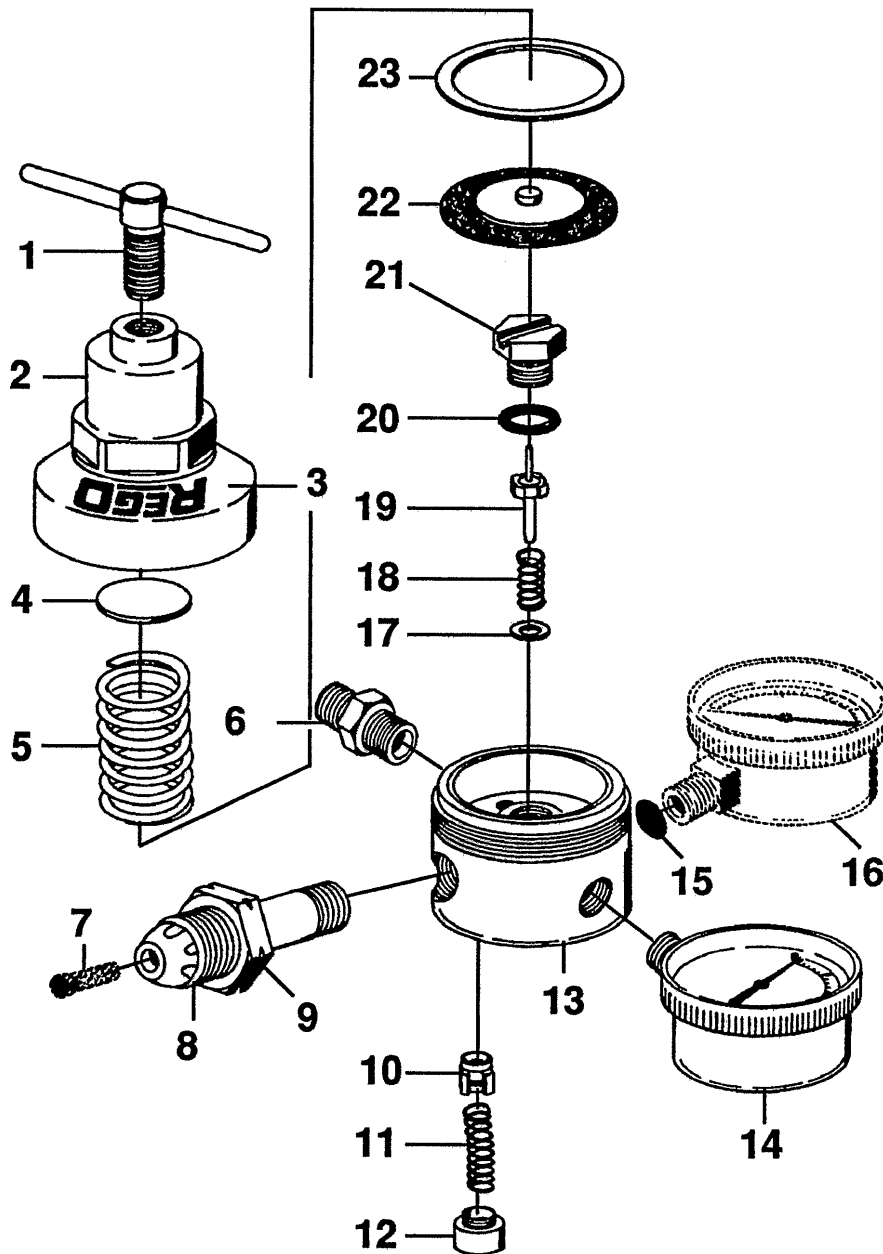


REF. NO.	MFG. NO.	S-S NO.	DESCRIPTION	CODE	REF. NO.	MFG. NO.	S-S NO.	DESCRIPTION	CODE
	4360A		Economizer		21	3360-53		Screw	
1	1200		Oxygen Inlet & Outlet (2)		22	3360-54		Lever Body	
2	1300		Fuel, Gas Inlet & Outlet (2)		*			Not Included with the 4360A	
3	4360-10		Valve Stem Assembly		†			Included in Repair Kit 4360A-80	
4	967-2		Screen						
5	4360-21	R-105	Base for Acetylene						
6	4360-24		Base for Natural Gas						
7	4360-22	R-106	Pilot Tip						
† 8	934-75A		Spring (2)						
* 9	3360-22		Screw (2)						
* 10	3360-21A		Bracket						
11	N/A		Body, Not Available as a Repair Part						
12	3360-6	R-142	Roll Pin						
* 13	14247-73		Nut (2)						
† 14	736-75A	R-111	Tetraseal (2)						
† 15	734-75A		Seat Assembly (2)						
† 16	RWP1101-20	R-122	O-Ring (2)						
† 17	735-75		Bonnet (2)						
18	3360-52		Lever Body						
19	7-196		Nut (2)						
20	3360-4		Screw (2)						

Rego/Rexarc

Models RWP 1101, RWP 1103, RWP 1104,
RWP 1105 & RWP 1106

Light Duty Cylinder Regulators





Rego/Rexarc

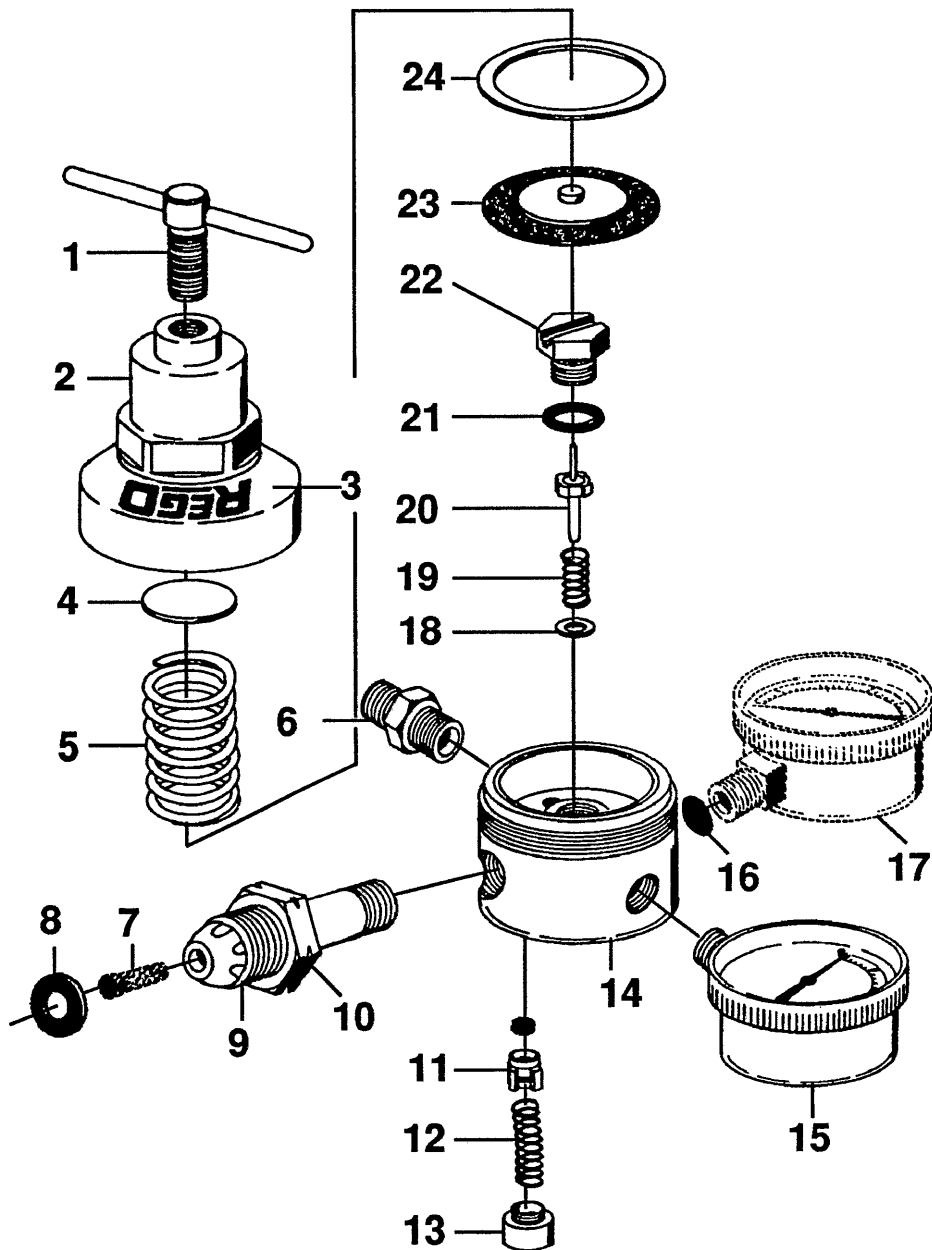
Models RWP 1101, RWP 1103, RWP 1104, RWP 1105 & RWP 1106 Light Duty Cylinder Regulators

REF. NO.	MFG. NO.	S-S NO.	DESCRIPTION	CODE	REF. NO.	MFG. NO.	S-S NO.	DESCRIPTION	CODE
	RWP 1101		Light Duty Cylinder Regulator	A	14	S 1679		Del. Pressure Gauge	A
	RWP 1103		Light Duty Cylinder Regulator	B		S 15574		Del. Pressure Gauge	B, C, D
	RWP 1104		Light Duty Cylinder Regulator	C		S 5576		Del. Pressure Gauge	E
	RWP 1105		Light Duty Cylinder Regulator	D	15	1600-26		Inlet Screen	A thru E
	RWP 1106		Light Duty Cylinder Regulator	E	16	RWP 1201-29		Inlet Gauge	A
1	RWP 1101-4		Adjusting Screw Assembly	A thru E		RWP 1203-29		Inlet Gauge	B thru E
2	N/A		Bonnet, Not Available as a Repair Part		17	RWP 1101-21		Seat Washer	A thru E
3	RWP 1101-30		Label	A thru E	*18	757-75	R-115	Seat Spring	A thru E
4	RWP 1101-7		Spring Button	A, E	19	RWP 1101-16E		Seat Assembly	A thru E
	RWP 1101-7		Spring Button (2)	B, C, D	*20	RWP 1101-15		O-Ring	A thru E
5	RWP 1101-8		Adjusting Spring	A	21	RWP 1101-14		Nozzle	A thru E
	RWP 1103-8		Adjusting Spring	B, C, D	*22	RWP 1101-9A		Diaphragm Assembly	A
	RCG 8281-2		Adjusting Spring	E		RWP 1101-9		Diaphragm Assembly	B thru E
6	1200		Outlet Bushing	A	23	RWP 1101-13		Slip Ring	A thru E
	1300		Outlet Bushing	B thru E				Included in Repair Kits	
7	967-5P		Filter	A thru E				RWP 1100-80C & RWP 1100-80D	
8	967-1HA		Inlet Nipple	A					
	968-1H		Inlet Nipple	B					
	969-11B		Inlet Nipple	C					
	970-1H		Inlet Nipple	D, E					
9	967-4		Nut	A					
	11131		Nut	B					
	969-2		Nut	C					
	970-2		Nut	D, E					
10	RWP 1101-26A		Relief Seat Assembly	A					
11	RWP 1101-28		Relief Spring	A					
12	RWP 1101-25		Relief Cap	A					
13	N/A		Body, Not Available as a Repair Part						

Rego/Rexarc

Models RWP 1201, RWP 1203, RWP 1205, RWP 1206, RWP 1207, RWP 1208, RWP 1209, RWP 1210 & RWP 1211

Medium Duty Cylinder Regulators





SEAL-SEAT

Rego/Rexarc

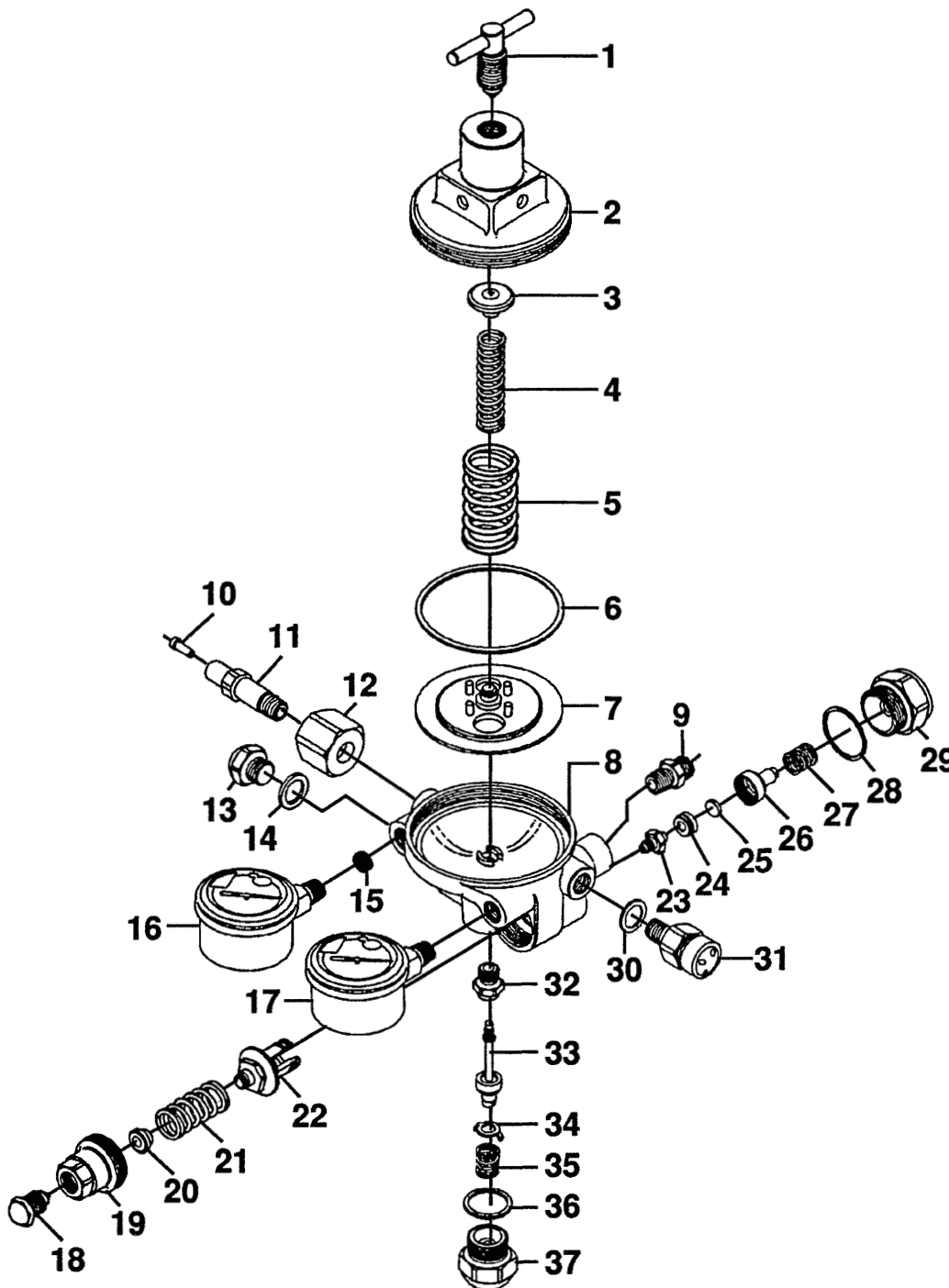
Models RWP 1201, RWP 1203, RWP 1205, RWP 1206, RWP 1207, RWP 1208, RWP 1209, RWP 1210 & RWP 1211 Medium Duty Cylinder Regulators

REF. NO.	MFG. NO.	S-S NO.	DESCRIPTION	CODE	REF. NO.	MFG. NO.	S-S NO.	DESCRIPTION	CODE
	RWP 1201		Medium Duty Cylinder Reg.	A		11131		Nut	B
	RWP 1203		Medium Duty Cylinder Reg.	B		970-2		Nut	C, D
	RWP 1205		Medium Duty Cylinder Reg.	C		983-4		Nut	E
	RWP 1206		Medium Duty Cylinder Reg.	D		970W-1		Nut	F
	RWP 1207		Medium Duty Cylinder Reg.	E		968-4		Nut	G, H, I
	RWP 1208		Medium Duty Cylinder Reg.	F	11	RWP 1101-26A		Relief Seat Assembly	A, E-I
	RWP 1209		Medium Duty Cylinder Reg.	G	12	RWP 1101-28		Relief Spring	A, E-I
	RWP 1210		Medium Duty Cylinder Reg.	H	13	RWP 1101-25		Relief Cap	A, E-I
	RWP 1211		Medium Duty Cylinder Reg.	I	14	N/A		Body, Not Available as a Repair Part	
1	RWP 1201-4		Adjusting Screw Assembly	A thru I	15	S 1679		Del. Pressure Gauge	A, E-I
2	N/A		Bonnet, Not Available as a Repair Part			S 15574		Del. Pressure Gauge	B, C
3	RWP 1201-30		Label	A thru I		S 5576		Del. Pressure Gauge	D
4	RWP 1201-7		Spring Button	A thru I	16	1600-26		Inlet Screen	A thru I
5	RWP 1201-8		Adjusting Spring	A, E-I	17	5562		Inlet Gauge	A, E-I
	RWP 1203-8		Adjusting Spring	B, C		5583		Inlet Gauge	B, C, D
	RWP 1206-8		Adjusting Spring	D	18	RWP 1101-21		Seat Washer	A thru I
6	1200		Outlet Bushing	A, G, I	*19	757-75	R-115	Seat Spring	A, E-I
	1300		Outlet Bushing	B thru E	*	RWP 1101-24A		Seat Spring	B, C, D
	027931-72		Outlet Bushing	F, H	*20	RWP 1106-16E		Seat Assembly	B, C
7	967-5P		Filter	A thru I		RWP 1101-16G		Seat Assembly	A, D-I
8	747		Inlet Washer	H	*21	RWP 1101-15		O-Ring	A thru I
9	967-1HA		Inlet Nipple	A	22	RWP 1201-14		Nozzle	A, D-I
	968-1H		Inlet Nipple	B		RWP 1101-14		Nozzle	B, C
	970-1H		Inlet Nipple	C, D, F	*23	RWP 1201-9A		Diaphragm Assembly	A-F, I
	983-1H		Inlet Nipple	E	*	RWP 1201-9B		Diaphragm Assembly	G, H
	13320A-4B		Inlet Nipple	G	24	RWP 1201-13		Slip Ring	A, D-I
	235-11C		Inlet Nipple	H	*			Included in Repair Kit	
	1343H-2		Inlet Nipple	I				RWP 1200-80C, RWP 1200-80D, &	
10	967-4		Nut	A				RWP 1200-80E	

Rego/Rexarc

Models 2060, 2061, 2063, 2065,
2067HY, 2068 & 2069

Two-Stage Cylinder Regulators





SEAL-SEAT

Rego/Rexarc

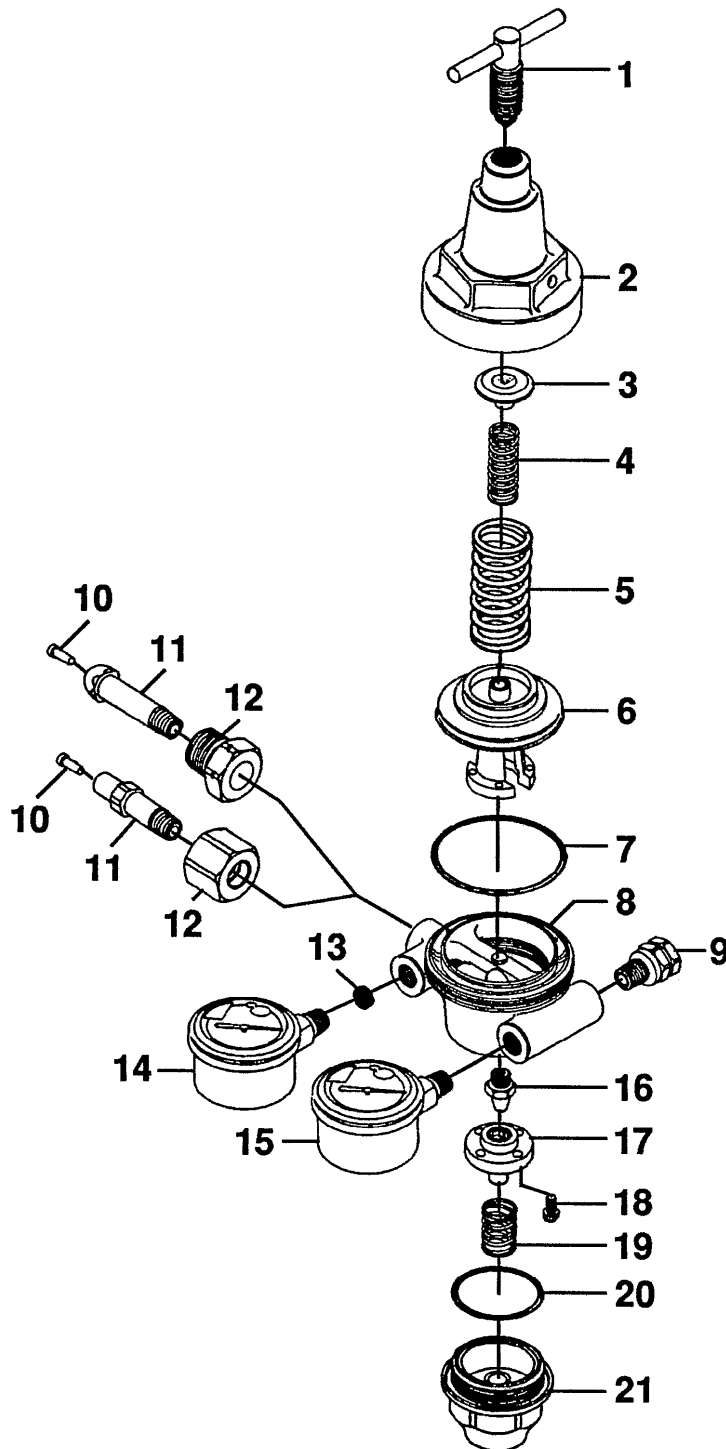
Models 2060, 2061, 2063, 2065,
2067HY, 2068 & 2069

Two-Stage Cylinder Regulators

REF. NO.	MFG. NO.	S-S NO.	DESCRIPTION	CODE	REF. NO.	MFG. NO.	S-S NO.	DESCRIPTION	CODE
	2060		Two Stage Cylinder Reg.	A	17	1178		Gauge	A, B, E-G
	2061		Two Stage Cylinder Reg.	B	*	15593PK		Gauge	C, D
	2063		Two Stage Cylinder Reg.	C	18	2060-4		Adjusting Screw	A thru G
	2065		Two Stage Cylinder Reg.	D	19	2060-2		Bonnet	A thru G
	2067HY		Two Stage Cylinder Reg.	E	20	2065-5		Spring Button	A thru G
	2068		Two Stage Cylinder Reg.	F	21	197-6		Spring	A thru G
	2069		Two Stage Cylinder Reg.	G	*22	2060-52		1st. Stage Diaphragm Assembly	A thru G
1	2060L-4	R-201	Adjusting Screw	A thru G				Nozzle	A, C-G
2	2060L-2A		Bonnet	A thru G	*23	2060-15		Nozzle	B
3	197-5		Spring Button	A thru G	*	9182C-15		Seat Retainer	A thru G
4	197-6		Spring	A thru G	24	2060-19A		Seat Disc, White	A, E-G
5	197-7		Spring	A, B, E-G	*25	33-16H	R-296	Seat Disc, Black (Old)	A, E-G
	963-7		Spring	C, D	*	33-16H	R-001.1	Seat Disc, White (Old)	A, E-G
• 6	2060-23	R-063	Gasket	A thru G	*	33-16H	R-001	Seat Disc, Black (Old)	B, C, D
• 7	2060-57A	R-309	2nd Stage Diaphragm Assembly	A thru G	*	184-16	R-002	Seat Disc, Clear	B, C, D
						184-16	R-207	Centerpiece	A thru G
8	N/A		Body, Not Available as a Repair Part		26	165-17		Spring	A thru G
9	1200		Bushing	A, B, G	27	1620-18	R-086	Gasket	A thru G
	1300		Bushing	C, D, E	28	2060-40*	R-429	Backcap	A thru G
	27931-72		Bushing	F	29	165-3		Gasket	A thru G
10	967-5P		Filter	A, C-G	30	2060-41	R-193	Relief Valve	A, B, E-G
	6121-52		Filter	B	31	2090		Relief Valve	C, D
11	967-1H		Inlet Nipple	A		2060-37		Nozzle	A, C-G
	235-11A		Inlet Nipple	B	32	2060L-15		Nozzle	B
	968-1H		Inlet Nipple	C		9182CL-15		Seat Disc & Centerpiece Assembly	A thru G
	970-1H		Inlet Nipple	D, F	*33	2060-56	R-292	Friction Washer	A thru G
	983-1H		Inlet Nipple	E		11675-11		Spring	A thru G
	13320A-4B		Inlet Nipple	G	34	2060L-18		Gasket	A thru G
12	967-4		Nut	A	*36	1147-21A	R-210	Backcap	A thru G
	968-4		Nut	B, G	37	1147-3		Included in Repair Kits 2060-80 & 2061-80	
	11131		Nut	C					
	970-2		Nut	D					
	983-4		Nut	E					
	970W-1		Nut	F					
13	2060-64		Plug	A thru G					
14	2060-35	R-089	Gasket	A thru G					
15	1600-26		Screen	A thru G					
16	5563PK		Gauge	A, B, E-G					
	15590PK		Gauge	C, D					

Rego/Rexarc

Models 1601, 1602, 1603, 1605, 1607, 1607HY,
1608, 1610, 1613, 1618 & 1619
Single-Stage Cylinder Regulators





SEAL-SEAT

Rego/Rexarc

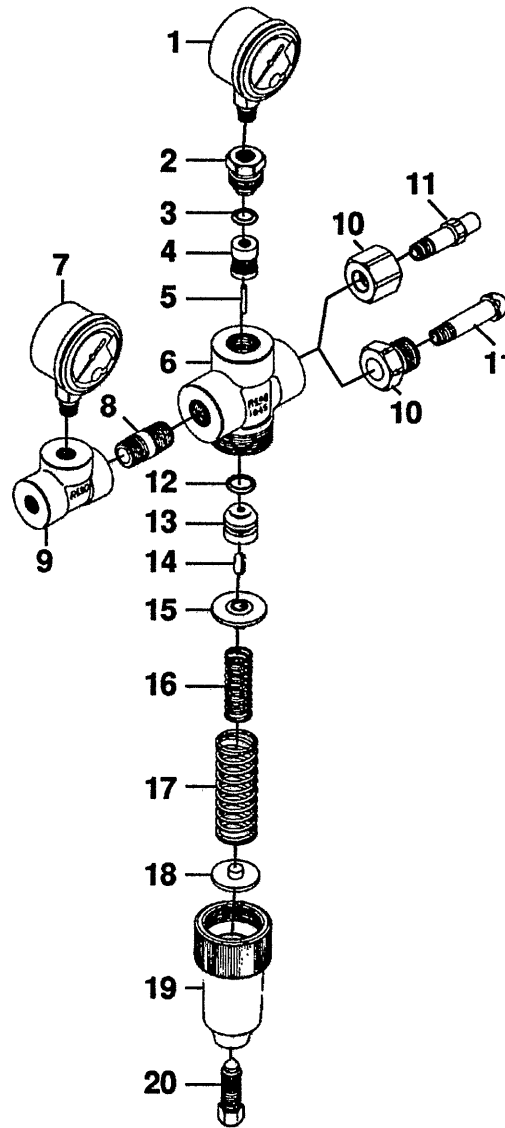
Models 1601, 1602, 1603, 1605, 1607, 1607HY, 1608, 1610, 1613, 1618 & 1619 Single-Stage Cylinder Regulators

REF. NO.	MFG. NO.	S-S NO.	DESCRIPTION	CODE	REF. NO.	MFG. NO.	S-S NO.	DESCRIPTION	CODE
1	1600-4	R-200	Adjusting Screw Assembly	A, C-J		970W-1		Nut	G, K
	1602-4		Adjusting Screw Assembly	B, K, L		968-4		Nut	H, J, L
2			Bonnet, Not available as a repair part		13	1600-26		Screen	A thru L
3	33-5		Spring Button	A, G, H, J	14	5563		Gauge	A, B, E-H, J-L
	1004-5		Spring Button	B, K, L				Gauge	C, D, I
	36-5		Spring Button	C-F, I		15590		Gauge	A, G, J
4	33-6		Spring	A, G, H, J	15	1179		Gauge	B, K, L
	1105-6		Spring	C-F, I		15590		Gauge	C, D
5	33-7		Spring	A, G, H, J		15593		Gauge	E, F
	1133-7		Spring	B, K, L		1178		Gauge	H
	1105-7	Spring	C-F, I		1283		Gauge	I	
* 6	1601-59	R-070 R-411	Diaphragm Assembly	A, G, H, J		100202		Gauge	I
* 7	1602-59		Diaphragm Assembly	B	*16	1601-15C	R-034	Nozzle	A, B
* 8	1600-59		Diaphragm Assembly	C-F, I	*	913-15	R-028	Nozzle	C, D, I
† 9	1600-9		Diaphragm Assembly	K, L	*	1150-15	R-230	Nozzle	E-H, K, L
10	1600-11		O-Ring	A, C-L	*	10985-1		Nozzle	J
11	1200		Body, not available as a repair part		*17	1600-56X	R-390	Seat Disc Assembly	A, B, E-H, J-L
			Bushing	A, B, G, J, K	*	1603-56	R-242	Seat Disc Assembly	C, D, I
	1300		Bushing	C-F, I	18	1600-20		Screw (4)	A thru L
	27937-72		Bushing	H	19	1601-18		Spring	A, B, G, H, J-L
10	967-5P		Filter	A thru L				Spring	C-F, I
11	967-1H	Inlet Nipple	A, B		1620-18	R-086	O-Ring or Gasket	A, C-J	
	968-1H	Inlet Nipple	C, E	*20	1600-12		O-Ring or Gasket	B, K, L	
	970-1H	Inlet Nipple	D, G, I, K	*	1600-31N	R-235	Backcap	A thru L	
	983-1H	Inlet Nipple	F	21	1600-3	R-231			
	1343H-2	Inlet Nipple	H, L	*			Included in repair kits 1601-80, 1602-80, 1603-80, 1606-80 and 1613-80.		
	235-11A	Inlet Nipple	J				Diaphragm only.		
12	967-4	Nut	A, B	†					
	11131	Nut	C						
	970-2	Nut	D, I						
	983-4	Nut	E, F						

Rego/Rexarc

Models 5796-2, 5796-7, 5796-8 & 5796-22

High Pressure Cylinder Regulators

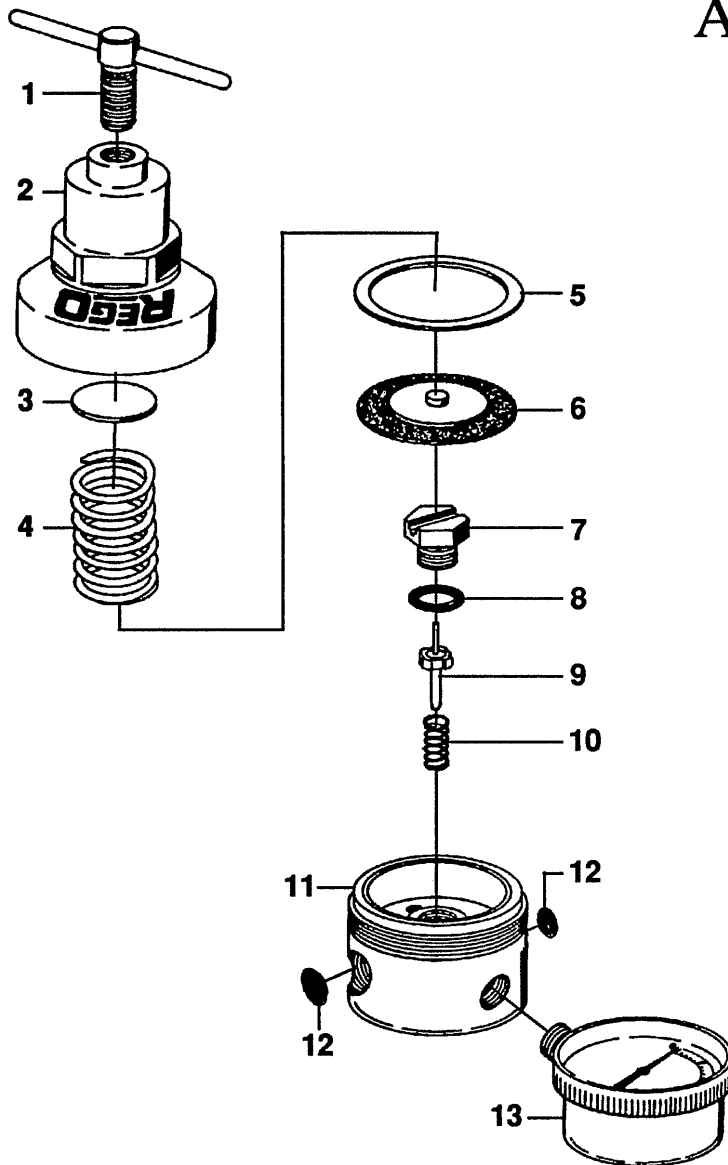


REF. NO.	MFG. NO.	S-S NO.	DESCRIPTION	CODE	REF. NO.	MFG. NO.	S-S NO.	DESCRIPTION	CODE
	5796-2		High Pressure Cylinder Reg.	A		514020-74		Nut	B
	5796-7		High Pressure Cylinder Reg.	B		514510-74		Nut	C
	5796-8		High Pressure Cylinder Reg.	C	11	514200-74		Nipple	A, D
	5796-22		High Pressure Cylinder Reg.	D		514100-74		Nipple	B
1	5563		Gauge	A thru D		514210-74		Nipple	C
2	26689-74		Bushing	A thru D	12	026690-74		O-Ring	A thru D
3	024710-74		O-Ring	A thru D	13	29935-74		Piston	A thru D
4	023115-76		Seat Assembly	A thru D	14	29937-74		Pivot Rod	A thru D
5	27095-74		Stem	A thru D	15	29936-74		Spring Guide	A thru D
6	N/A		Body, Not Available as a Repair Part		16	26837-74		Spring	A thru D
7	5563		Gauge	A, B, C	17	591500-74		Spring	A thru D
	100208		Gauge	D	18	26820-74		Spring Button	A thru D
8	26687-74		Nipple	A thru D	19	026691-74		Bonnet Assembly	A thru D
9	26686-74		Tee	A thru D	20	26688-74		Adjusting Screw	A, B, C
10	513430-74		Nut	A, D		29353-74		Adjusting Screw	D

Rego/Rexarc

Models RCG 1147, RCG 1147G

Air Regulators

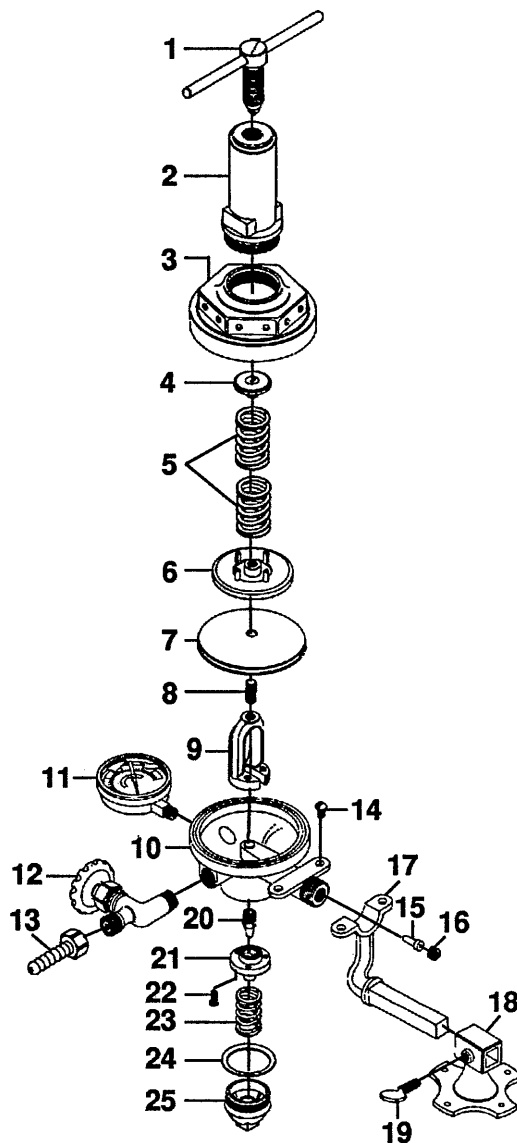


REF. NO.	MFG. NO.	S-S NO.	DESCRIPTION	CODE	REF. NO.	MFG. NO.	S-S NO.	DESCRIPTION	CODE
	RCG 1147		Air Regulator	A	*			Included in Repair Kit RCG 1147-80A	
	RCG 1147G		Air Regulator	B					
1	RWP 1101-4		Adjusting Screw	A, B					
2	RWP 1101-2		Bonnet	A, B					
3	RWP 1101-7		Spring Button	A, B					
4	RWP 1101-8		Spring	A, B					
5	RWP 1101-13		Slip Ring	A, B					
* 6	RWP 1101-9A		Diaphragm Assembly	A, B					
7	RWP 1101-14		Nozzle	A, B					
* 8	RWP 1101-15		O-Ring	A, B					
* 9	RWP 1101-16E		Seat Disc Assembly	A, B					
* 10	757-75	R-115	Spring	A, B					
11	N/A		Not Available as a Repair Part	A, B					
12	1600-26		Screen (2)	A, B					
13	S 1679PK		Gauge	B					

Rego/Rexarc

Model 1190B

Carbon Dioxide Regulator

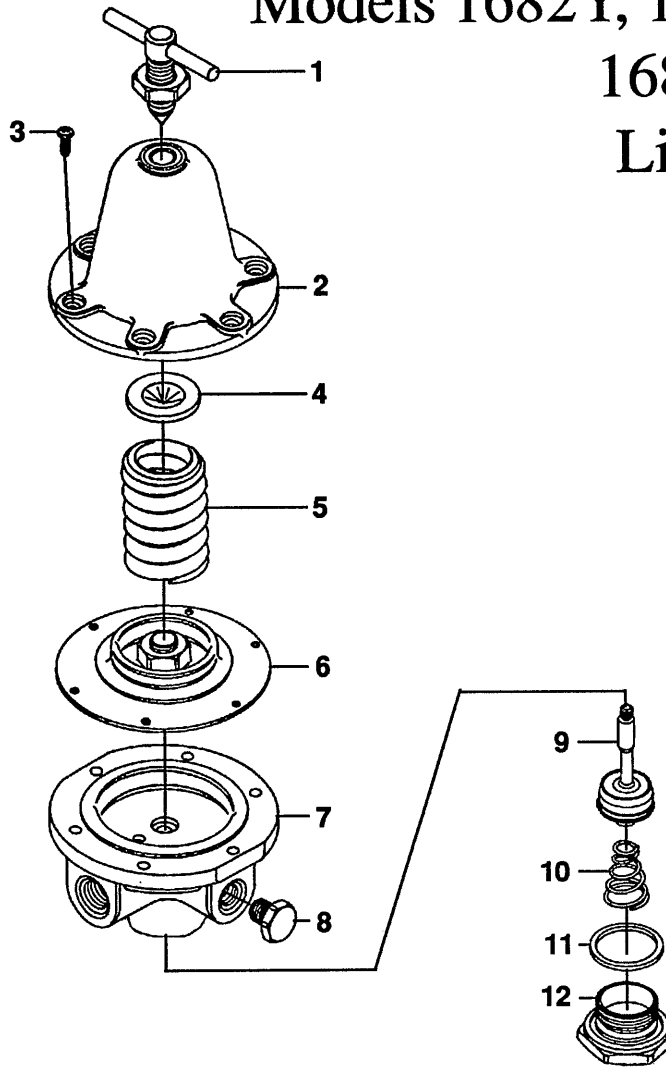


REF. NO.	MFG. NO.	S-S NO.	DESCRIPTION	CODE	REF. NO.	MFG. NO.	S-S NO.	DESCRIPTION	CODE
	1190B		Carbon Dioxide Regulator		13	43C		Coupling Assembly	
1	1602-4		Adjusting Screw		14	35-4		Screw (2)	
2	1138-2A		Spring Housing		15	3060-62P		Filter	
3	1138-2B		Bonnet		16	3060-63		Filter Retainer	
4	1004-5		Spring Button		17	35-2		Bracket Arm	
5	1133-7		Spring		18	35-1		Bracket Clamp	
6	1103-8		Diaphragm Plate		19	35-3		Clamping Screw	
7	926-9		Diaphragm		20	1190-15		Nozzle	
8	926-10A		Yoke Stud		21	1190-56N		Seat Disc & Centerpiece Assembly	
9	926-10		Yoke		22	33-20		Screw (3)	
10			Body, Not available as a repair part		23	909-18		Spring	
11	62A		Gauge		24	33-21		Gasket	
12	33-22		Needle Valve Assembly		25	33-3		Backcap	

Rego/Rexarc

Models 1682Y, 1683Y, 1684Y, 1686Y & 1688Y

Line Regulators

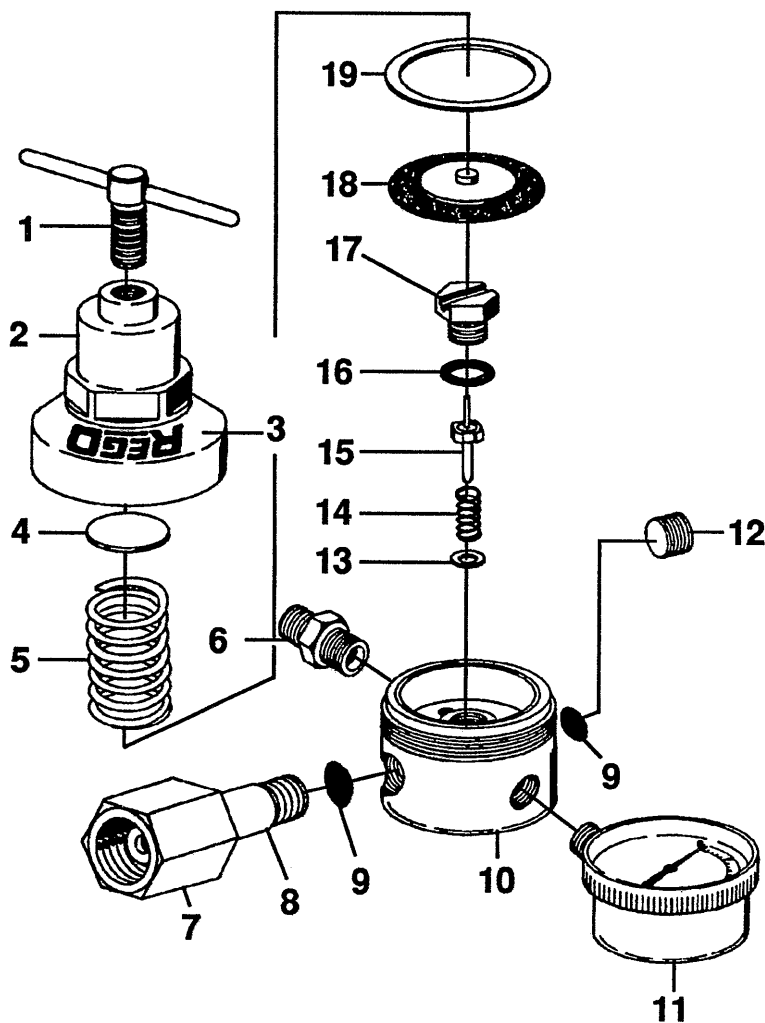


REF. NO.	MFG. NO.	S-S NO.	DESCRIPTION	CODE	REF. NO.	MFG. NO.	S-S NO.	DESCRIPTION	CODE
	1682Y		Line Regulator	A		1484S-7		Spring (100-200 PSI)	C
	1683Y		Line Regulator	B		1488S-7		Spring (100-200 PSI)	D, E
	1684Y		Line Regulator	C	6	M1583-59		Diaphragm Assembly	A, B
	1686Y		Line Regulator	D		M1484B-59A	R-287	Diaphragm Assembly	C
	1688Y		Line Regulator	E		M1488B-59A	R-285	Diaphragm Assembly	D, E
1	8804J-4		Adjusting Screw Assembly	A thru C	7			Body, Not available as a repair part	
	8806J-4		Adjusting Screw Assembly	D, E	8	985BT		Plug	A thru E
2	1683-11		Bonnet Assembly	A, B	* 9	1683-56A		Stem & Seat Assembly	A, B
	N1684-11D		Bonnet Assembly	C	* N1484-56A		R-286	Stem & Seat Assembly	C
	1686-11		Bonnet Assembly	D, E	* N1688-56			Stem & Seat Assembly	D, E
3	8803-24		Screw (6)	A, B	10	1484-18		Spring	A thru C
	8804-24		Screw (6)	C		1488-18		Spring	D, E
	8806-24		Screw (8)	D, E	* 11	8803-21		Tetraseal	A, B
4	1483J-5		Spring Button	A, B	* 8804-21			Tetraseal	C
	1484J-5		Spring Button	C	* 8806-21			Tetraseal	D, E
	1488-5		Spring Button	D, E	12	1583EJ-3		Backcap	A, B
5	1586FD-7		Spring (0-15 PSI)	D, E		1584EJ-3		Backcap	C
	1483L-7		Spring (0-50 PSI)	A, B		N1488-3B		Backcap	D, E
	1484L-7		Spring (0-50 PSI)	C		1286		Gauge (0-100 PSI) (Optional)	A thru E
	1488L-7		Spring (0-50 PSI)	D, E		S1679		Gauge (0-200 PSI) (Optional)	A thru E
	1483-7		Spring (0-125 PSI)	A, B		15578		Gauge (0-400 PSI) (Optional)	A thru E
	1484-7		Spring (0-125 PSI)	C	*			Included in repair kits 1682Y-80, 1684Y-80 and 1686-80.	
	1488-7		Spring (0-125 PSI)	D, E					
	1483S-7		Spring (100-200 PSI)	A, B					

Rego/Rexarc

Models RCG 6000, RCG 6001 & RCG 6003

Light Duty Station Regulators

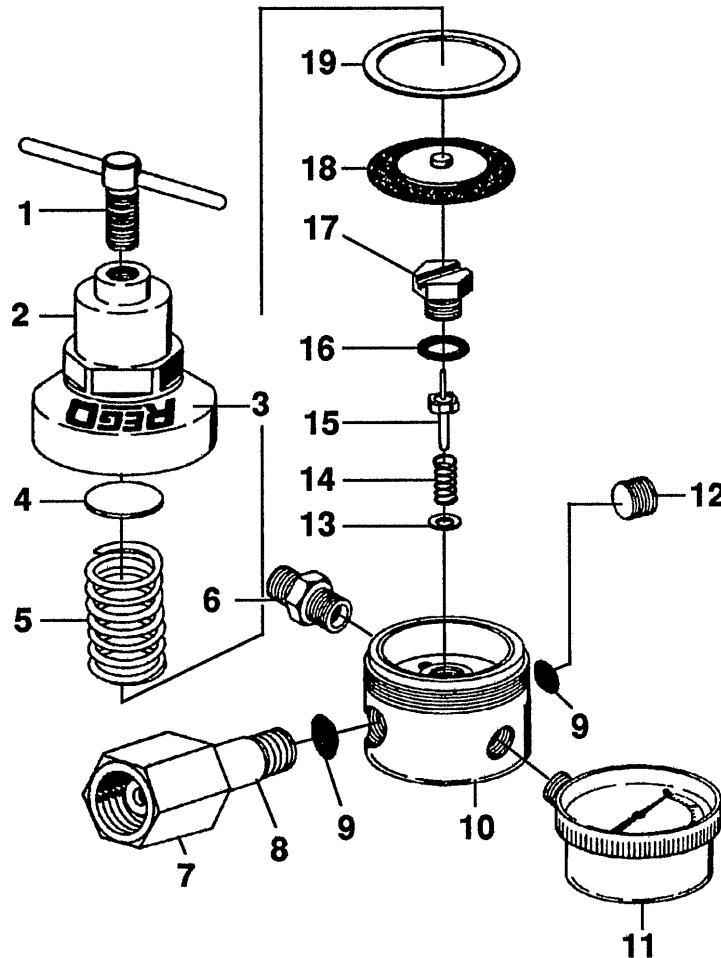


REF. NO.	MFG. NO.	S-S NO.	DESCRIPTION	CODE	REF. NO.	MFG. NO.	S-S NO.	DESCRIPTION	CODE
	RCG 6000		Light Duty Station Regulator	A	10	N/A		Body, Not Available as a Repair Part	
	RCG 6001		Light Duty Station Regulator	B	11	S 1679		Del. Pressure Gauge	A, B
	RCG 6003		Light Duty Station Regulator	C		S 15574		Del. Pressure Gauge	C
1	RWP 1101-4		Adjusting Screw Assembly	A, B, C	12	985 BHT		Plug	A, B, C
2	N/A		Bonnet, Not Available as a Repair Part		13	RWP 1101-21		Seat Washer	A, B, C
3	RWP 1101-30		Label	A, B, C	*14	757-75	R-115	Seat Spring	A, B, C
4	RWP 1101-7		Spring Button	A, B	*15	RWP 1101-16G		Seat Assembly	A, B, C
	RWP 1101-7		Spring Button (2)	C	16	RWP 1101-15		O-Ring	A, B, C
5	RWP 1101-8		Adjusting Spring	A, B	17	RWP 1201-14		Nozzle	A, B, C
	RWP 1103-8		Adjusting Spring	C	*18	RWP 1101-9A		Diaphragm Assembly	A, B
6	1200		Outlet Bushing	A	*19	RWP 1101-9		Diaphragm Assembly	C
	027931-72		Outlet Bushing	B		* RWP 1101-13		Slip Ring	A, B, C
	1300		Outlet Bushing	C				Included in Repair Kits	
7	1271-1		Nut	A, B				RWP 1100-80C and	
	1371-1		Nut	C				RWP 1100-80D	
8	1271-2		Inlet Nipple	A, B, C					
9	1600-26		Inlet Screen (2)	A, B, C					

Rego/Rexarc

Models RCG 6100, RCG 6101, RCG 6103 & RCG 6107

Medium Duty Station Regulators

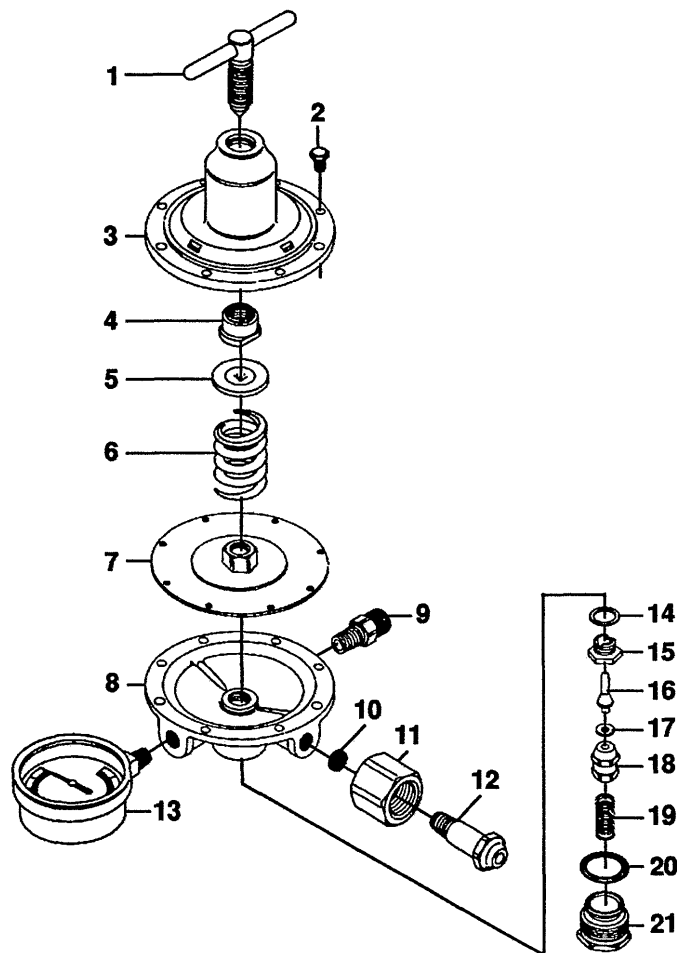


REF. NO.	MFG. NO.	S-S NO.	DESCRIPTION	CODE	REF. NO.	MFG. NO.	S-S NO.	DESCRIPTION	CODE
	RCG 6100		Medium Duty Station Reg.	A	9	1600-26		Inlet Screen (2)	A thru D
	RCG 6101		Medium Duty Station Reg.	B	10	N/A		Body, Not Available as a Repair Part	
	RCG 6103		Medium Duty Station Reg.	C	11	S 1679		Del. Pressure Gauge	A, B
	RCG 6107		Medium Duty Station Reg.	D		S 15574		Del. Pressure Gauge	C
1	RWP 1201-4		Adjusting Screw Assembly	A thru D		S 5576		Del. Pressure Gauge	D
2	N/A		Bonnet, Not Available as a Repair Part		12	985 BHT		Plug	A thru D
3	RWP 1201-30		Label	A thru D	13	RWP 1101-21		Seat Washer	A thru D
4	RWP 1201-7		Spring Button	A thru D	*14	757-75	R-115	Seat Spring	A, B
5	RWP 1201-8		Adjusting Spring	A, B		RWP 1101-24A		Seat Spring	C, D
	RWP 1203-8		Adjusting Spring	C	*15	RWP 1101-16G		Seat Assembly	A thru D
	RWP 1206-8		Adjusting Spring	D	*16	RWP 1101-15		O-Ring	A thru D
6	1200		Outlet Bushing	A	17	RWP 1201-14		Nozzle	A thru D
	027931-72		Outlet Bushing	B	*18	RWP 1201-9A		Diaphragm Assembly	A thru D
	1300		Outlet Bushing	C, D	19	RWP 1201-13		Slip Ring	A, B, D
7	1271-1		Nut	A, B	*			Included in Repair Kits	
	1371-1		Nut	C, D				RWP 1200-80C and	
8	1271-2		Inlet Nipple	A thru D				RWP 1200-80D	

Rego/Rexarc

Models 6200, 6201, 6203, 6204, 6205 & 6207

Heavy Duty Station Regulators

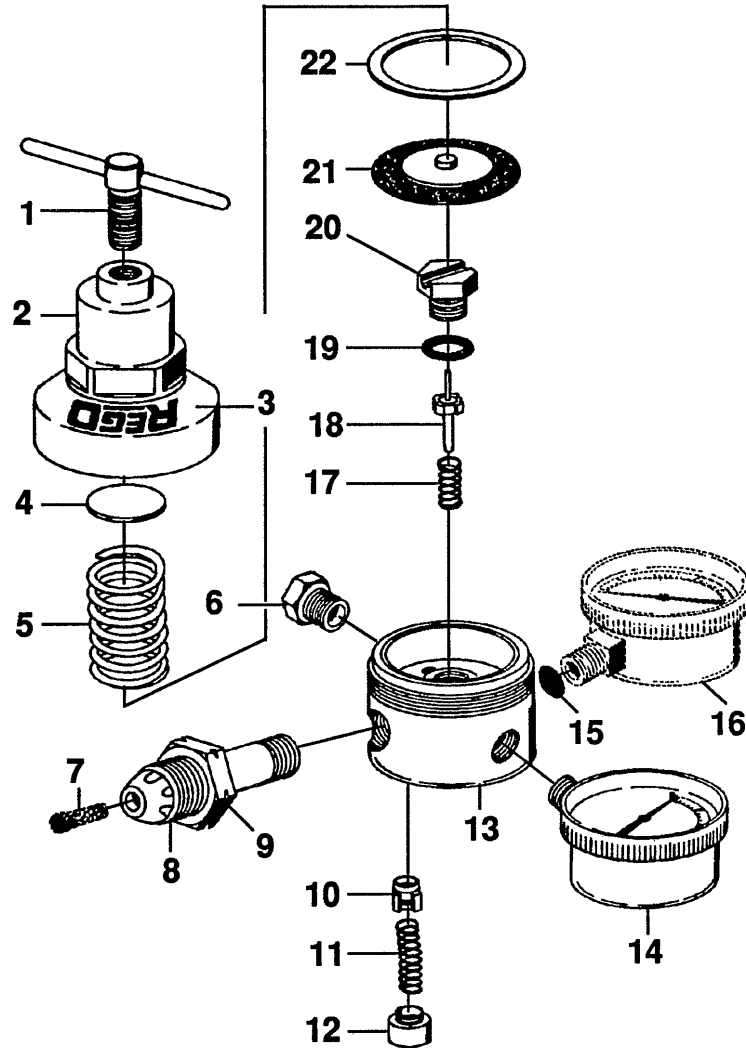


REF. NO.	MFG. NO.	S-S NO.	DESCRIPTION	CODE	REF. NO.	MFG. NO.	S-S NO.	DESCRIPTION	CODE
6200			Heavy Duty Station Reg.	A	9 1200			Bushing	A, D
6201			Heavy Duty Station Reg.	B	27931-72			Bushing	B, E
6203			Heavy Duty Station Reg.	C	1300			Bushing	C, F
6204			Heavy Duty Station Reg.	D	10 1600-26			Screen	A, D
6205			Heavy Duty Station Reg.	E	11 1271-1			Nut	A, B, D, E
6207			Heavy Duty Station Reg.	F	1371-1			Nut	C, F
1 623200-74			Adjusting Screw	A thru F	12 1271-2			Tailpiece	A thru F
2 6200-1			Bonnet Screw (8)	A thru F	13 100204			Gauge	A, B
3 6200-2			Bonnet	A	15593			Gauge	C
6201-2			Bonnet	B	100202			Gauge	D, E, F
6203-2			Bonnet	C	* 14 622520-74			Nozzle Washer	A thru F
6204-2			Bonnet	D	* 15 622510-74			Nozzle	A thru F
6205-2			Bonnet	E	16 622500-74			Stem	A thru F
6207-2			Bonnet	F	* 17 622200-74		T-202	Seat	A thru F
4 622900-74	T-219		Insert	A thru F	18 622600-74			Stem Guide	A thru F
5 1484J-5			Spring Button	A thru F	19 023012-74			Spring	A thru F
6 591500-74			Spring	A, B	* 20 623500-74		T-213	O-Ring	A thru F
591520-74			Spring	C	21 623800-74			Back Cap	A thru F
651510-74			Spring	D, E, F	*			Included In Repair Kit 6200-80	
7 622100-74A			Diaphragm* & Yoke† Assy.	A thru F	†			Yoke Not Included in Repair Kit	
8 622300-74			Body	A thru F					

Rego/Rexarc

Models RWP 1200AH & RWP 1200C

Medium Duty Flowmeter/Regulators

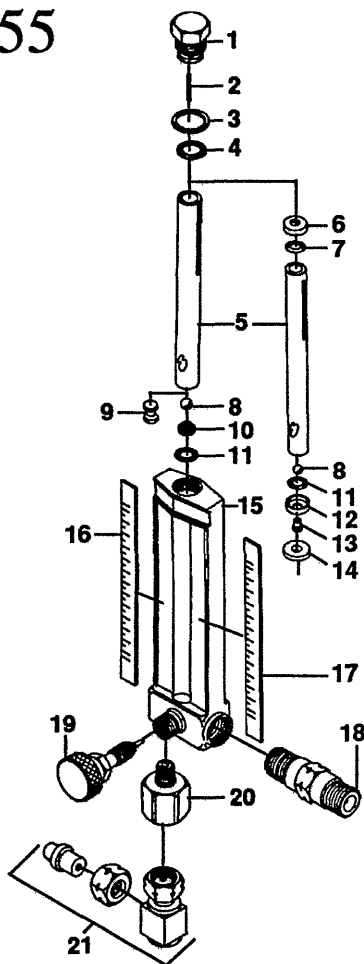


REF. NO.	MFG. NO.	S-S NO.	DESCRIPTION	CODE	REF. NO.	MFG. NO.	S-S NO.	DESCRIPTION	CODE
	RWP 1200AH		Medium Duty Flow./Reg.	A	12	RWP 1101-25		Relief Cap	A, B
	RWP 1200C		Medium Duty Flow./Reg.	B	13	N/A		Body, Not Available as a Repair Part	
1	RWP 1201-4		Adjusting Screw Assembly	A, B	14	S1680		Flow Gauge	A
2	N/A		Bonnet, Not Available as a Repair Part			S1681		Flow Gauge	B
3	RWP 1201-30		Label	A, B	15	1600-26		Inlet Screen	A, B
4	RWP 1201-7		Spring Button	A, B	16	RWP 1201-29		Inlet Gauge	A, B
5	RWP 1201-8		Adjusting Spring	A, B	17	757-75		Seat Spring	A, B
6	27932-11B		Outlet Bushing	A, B	*18	RWP 1101-16G		Seat Assembly	A, B
7	967-5P		Filter	A, B	*19	RWP 1101-15		O-Ring	A, B
8	970-1H		Inlet Nipple	A	20	RWP 1201-14		Nozzle	A, B
	235-11C		Inlet Nipple	B	*21	RWP 1201-9B		Diaphragm Assembly	A, B
9	970W-1		Nut	A	22	RWP 1201-13		Slip Ring	A, B
	968-4		Nut	B	23	747		Washer (Not Shown)	B
10	RWP 1101-26A		Relief Seat Assembly	A, B	*			Included in Repair Kit	
11	RWP 1101-28		Relief Spring	A, B				RWP 1200-80E	

Rego/Rexarc

Models FM 5550, FM 5551, FM 5552, FM 5553,
FM 5554 & FM 5555

Flowmeters

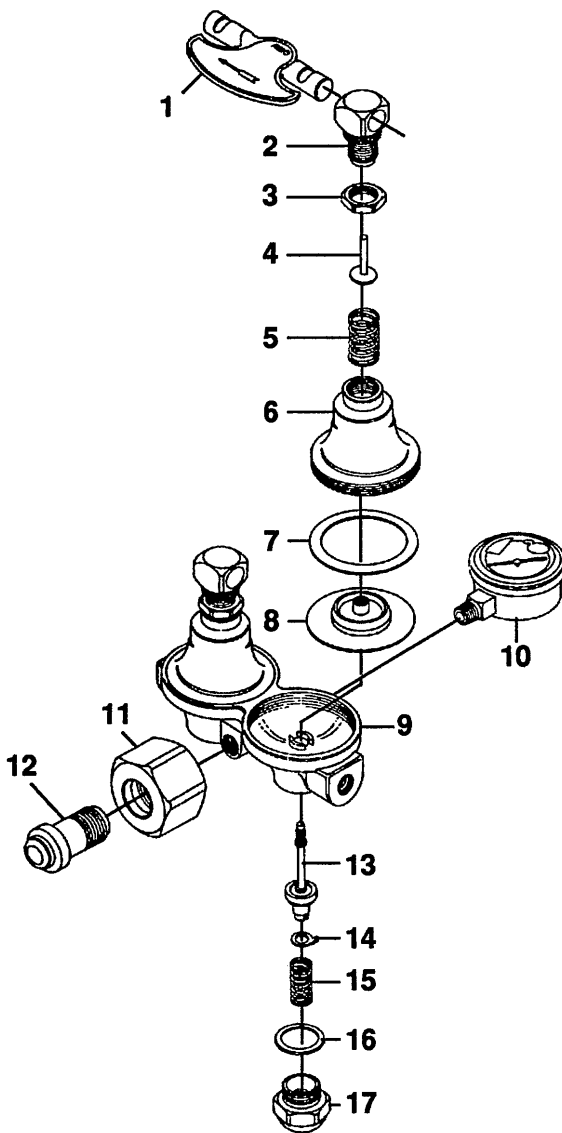


REF. NO.	MFG. NO.	S-S NO.	DESCRIPTION	CODE	REF. NO.	MFG. NO.	S-S NO.	DESCRIPTION	CODE
	FM 5550		Flowmeter	A	15	N/A		Body, Not Available as a Repair Part	
	FM 5551		Flowmeter	B	16	17580-74		Strip	A
	FM 5552		Flowmeter	C		17578-74		Strip	B
	FM 5553		Flowmeter	D		21028-74		Strip	C
	FM 5554		Flowmeter	E		26622-74		Strip	D
	FM 5555		Flowmeter	F		27591-74		Strip	E
1	26148-74		Cap Nut	A thru F		26123-74		Strip	F
2	21013-74		Roll Pine	A thru F	17	17581-74		Strip	A
3	21022-74		Washer	A thru F		17579-74		Strip	B
4	7193-1		O-Ring	A thru F		21027-74		Strip	C
5	21012-74		Tube (2)	A-D, F		26621-74		Strip	D
	27594-74		Tube (2)			20719-74		Strip	E
6	27746-74		Upper Cap	E		26122-74		Strip	F
7	26512-74		O-Ring	E	18	27936-74		Inlet Bushing	A, B, D
8	3856-4		Ball (2)	A, D		21025-74		Inlet Bushing	C
	21009-74		Ball (2)	B, F		26146-74		Inlet Bushing	E, F
	27545-74		Ball (2)	E	19	21030-74A		Needle Valve Assembly	A thru F
9	21034-74		Float	C	20	27003-74		Outlet Bushing	A, B, D
10	545610-74		Screen	A-D, F		688-75		Outlet Bushing	C
11	7519-36		O-Ring (2)	A-D, F		687-75		Outlet Bushing	E, F
	26512-74		O-Ring (2)	E	21	27935-74		Block Assembly	A, B, D
12	27747-74		Lower Cap	E		21031-74		Block Assembly	C
13	21049-74		Eyelet	E		26149-74		Block Assembly	E, F
14	21048-74		Washer	E					

Rego/Rexarc

Models 11204 & 11205

Manifold Changeover Regulators

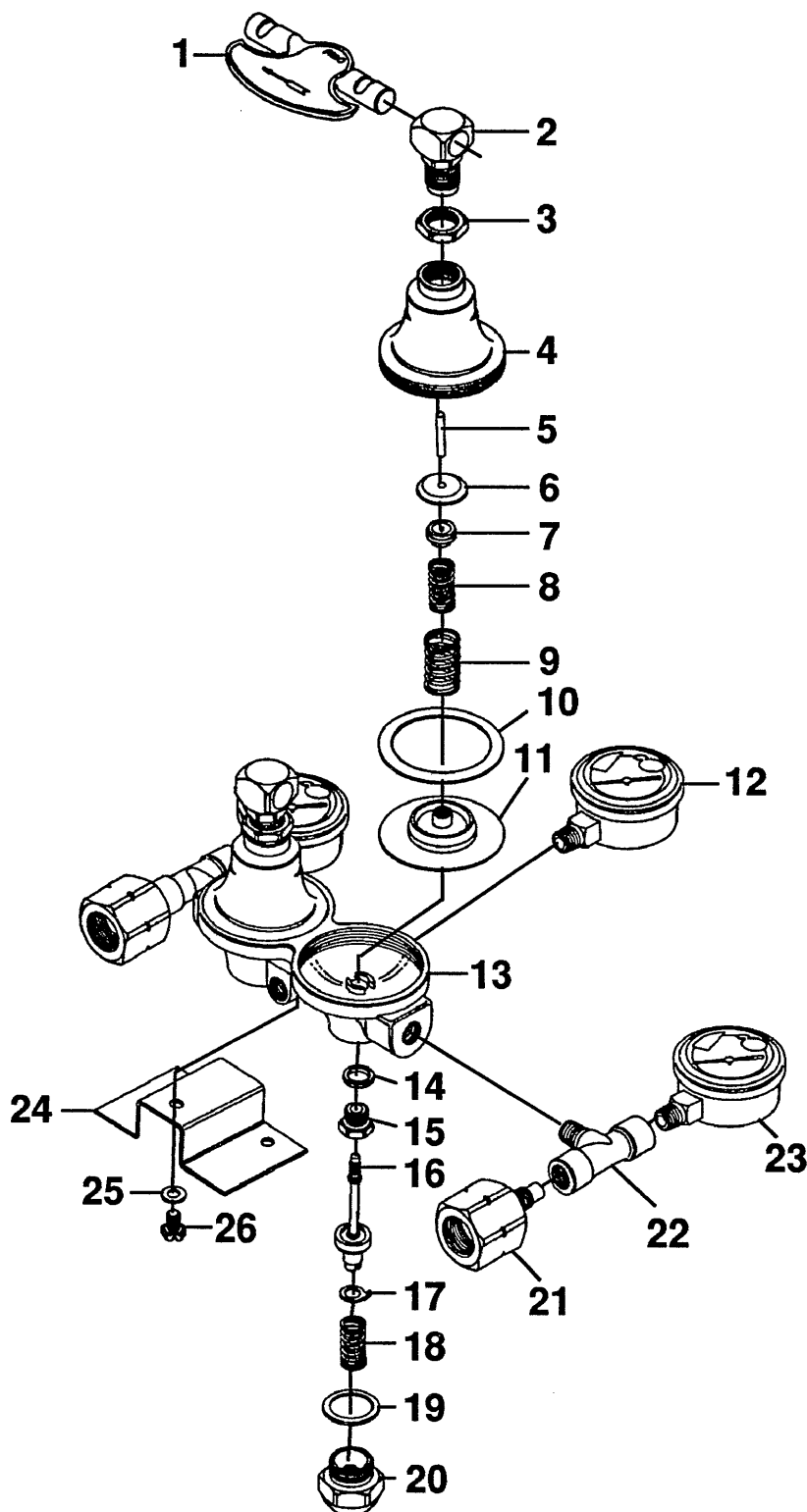


REF. NO.	MFG. NO.	S-S NO.	DESCRIPTION	CODE	REF. NO.	MFG. NO.	S-S NO.	DESCRIPTION	CODE
	11204		Manifold Changeover Reg.	A	10	11204-8		Gauge	A, B
	11205		Manifold Changeover Reg.	B	11	1271-1		Nut	A
1	11204-20		Handle	A, B	12	968-4		Nut	B
2	2120-13		Adjusting Screw Assy. (2)	A, B	12	1271-2		Tailpiece	A
3	466-28		Nut (2)	A, B		802-1323		Tailpiece	B
4	2120-3		Spring Depressor (2)	A, B	*13	2523-26		Centerpiece Assembly (2)	A, B
5	11204-1		Spring (2)	A, B	*14	2523-2		Friction Washer (2)	A, B
6	11204-4		Bonnet (2)	A, B	*15	476-18		Spring (2)	A, B
* 7	2523-3		Gasket (2)	A, B	*16	1147-21A		Gasket (2)	A, B
* 8	11204-22		Diaphragm Assembly (2)	A, B	17	1147-3		Back Cap (2)	A, B
9			Body, not available as a repair part		*			Included in repair kit 11204-80.	

Rego/Rexarc

Models M 2523HP

High Pressure Changeover Regulators





SEAL-SEAT

Rego/Rexarc

Models M 2523HP

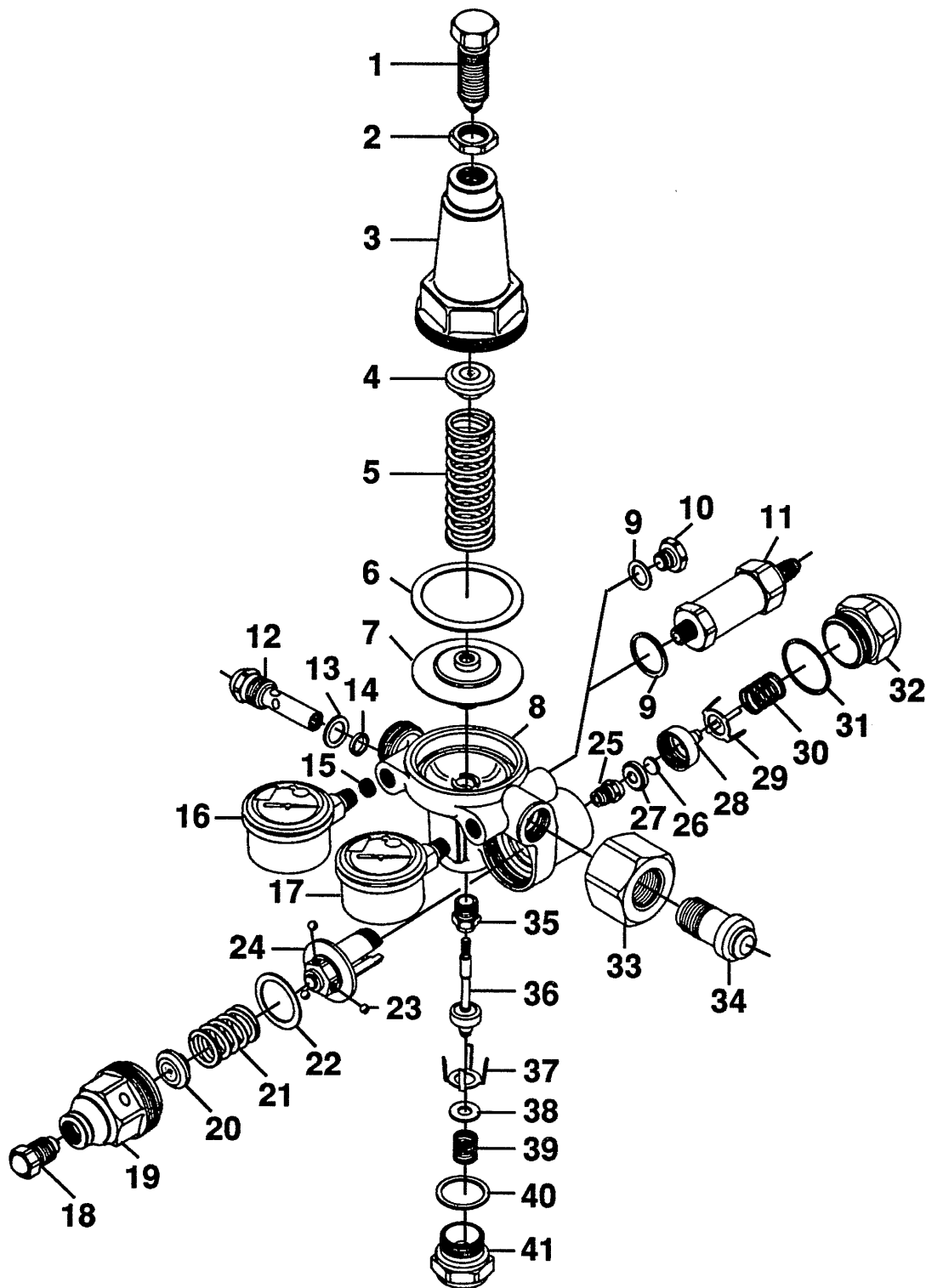
High Pressure Changeover Regulators

REF. NO.	MFG. NO.	S-S NO.	DESCRIPTION	CODE	REF. NO.	MFG. NO.	S-S NO.	DESCRIPTION	CODE
M 2523HP320			High Pressure Changeover Regulator	A	12	2523HP-7		Gauge	A thru F
M 2523HP350			High Pressure Changeover Regulator	B	13			Body, not available as a repair part	
M 2523HP540			High Pressure Changeover Regulator	C	* 14	368-13		Washer (2)	A thru F
M 2523HP580			High Pressure Changeover Regulator	D	* 15	2523HP-5C		Nozzle (2)	A
M 2523HP590			High Pressure Changeover Regulator	E	*	2523HP-5B		Nozzle (2)	B thru F
M 2523HP1320			High Pressure Changeover Regulator	F	* 16	2523HP-8C		Seat & Centerpiece Assy. (2)	A
1	2523-20		Handle	A thru F	*	2523HP-8B		Seat & Centerpiece Assy. (2)	B thru F
2	2523HP-9		Adjusting Screw	A thru F	17	2523-2		Friction Washer (2)	A thru F
3	2523HP-6		Locknut (2)	A thru F	18	476-18		Spring (2)	A thru F
4	2523HP-2		Bonnet (2)	A thru F	19	2409-6		Washer (2)	A thru F
5	2523-33		Pin (2)	A thru F	20	1147-3		Backcap (2)	A thru F
6	3133-5		Retainer (2)	A thru F	21	2523HP-35		Adapter (2)	A
7	2065-5		Spring Button (2)	A thru F		2523HP-33		Adapter (2)	B
8	2523-37		Spring (2)	A thru F		2523HP-32		Adapter (2)	C
* 9	2523HP-57		Spring (2)	A thru F		2523HP-31		Adapter (2)	D
* 10	2523HP-4		Gasket (2)	A thru F		2523HP-30		Adapter (2)	E
* 11	2523-35		Diaphragm Assembly (2)	A		2523HP-34		Adapter (2)	F
	2523HP-10		Diaphragm Assembly (2)	B thru F	22	2523HP-40		Tee (2)	A thru F
					23	5562C		Gauge (2)	A thru F
					24	2523HP-65		Bracket	A thru F
					25	2523HP-66		Lockwasher	A thru F
					26	2523HP-67		Screw	A thru F
					*			Included in repair kits 2523HP-80A and 2523HP-80B	

Rego/Rexarc

Model 3070 Series

Two-Stage Manifold Regulators





SEAL-SEAT

Rego/Rexarc

Model 3070 Series

Two-Stage Manifold Regulators

REF. NO.	MFG. NO.	S-S NO.	DESCRIPTION	CODE	REF. NO.	MFG. NO.	S-S NO.	DESCRIPTION	CODE
	3070AR		Two Stage Manifold Reg.	A		963-7		Spring	E
	3070HE		Two Stage Manifold Reg.	B		1650-7		Spring	H
	3070NT		Two Stage Manifold Reg.	C	22	3070-2		Gasket	A thru H
	3070XY		Two Stage Manifold Reg.	D	23	3856-4		Indicator Ball (3)	A-D, F-H
	3070AC		Two Stage Manifold Reg.	E	*24	M 3060-52		1st Stage Diaphragm Assy.	A-D, F-H
	3070CD		Two Stage Manifold Reg.	F	*	3065-52		1st Stage Diaphragm Assy.	E
	3070HY		Two Stage Manifold Reg.	G	*25	3060-15		Nozzle	A-D, G, H
	3070HL		Two Stage Manifold Reg.	H	*	3065-15		Nozzle	E
1	3070L-14A		Adjusting Screw	A thru H	*	11465-15		Nozzle	F
2	3070L-15		Locknut	A thru H	*26	33-16H	R-001:1	Seat Disc (Black - Old)	A-D, G, H
3	3060L-2		Bonnet	A thru H	*	33-16H	R-001	Seat Disc (White - Old)	A-D, G, H
4	3060L-5		Spring Button	A thru H	*	33-16H	R-296	Seat Disc (White)	A-D, G, H
5	3060L-7A		Spring	A-D, F-H	*	184-16	R-002	Seat Disc (Black - Old)	E, F
	3065L-7		Spring	E	*	184-16	R-207	Seat Disc (Clear)	E, F
6	3060L-23		Gasket	A thru H	27	3060-19B		Seat Retainer	A thru H
* 7	M 3060L-57A		2nd Stage Diaphragm	A-D, F-H	28	3060-17		Centerpiece	A thru H
	3065L-57		2nd Stage Diaphragm	E	29	3060-40		Friction Washer	A thru H
8	N/A		Body, Not Available as a Repair Part		30	1620-18	R-86	Spring	A thru H
9	2060-35	R-193	Gasket (2)	A-D, F-H	31	3070-60		Gasket	A thru H
	2060-41		Gasket (2)	E	32	3060-3		Backcap	A thru H
10	2060-37		Plug	E	33	2223-6		Nut	A thru H
11	3090S		Relief Valve	A-D, F-H	34	1138X-2		Tailpiece	A thru H
12	3060-60P	R-171	Filter Assembly	A thru H	35	M 3060L-15		Nozzle	A-E, G, H
13	3060-35		Gasket	A thru H		M 11465L-15		Nozzle	F
14	3060-36		Gasket	A thru H	*36	M 3060L-25B		Seat Disc Assembly	A-D, F-H
15	1600-26		Screen	A thru H	*	3065L-25B		Seat Disc Assembly	E
16	5553		Gauge	A-D, F-H	37	3060L-40		Friction Washer	A thru H
	15567		Gauge	E	38	M 3060-26	R-356	Washer	A-D, F-H
17	5542		Gauge	A-D, F, G	39	1620-18	R-086	Spring	A thru H
	15595R		Gauge	E	*40	3060L-3A	R-094	Gasket	A thru H
	1178		Gauge	H	41	3060L-3		Backcap	A thru H
18	M 3060-4		Adjusting Screw	A-D, F-H	*			Included in Repair Kits 3060-80 and 3070CD-80.	
	3060-4		Adjusting Screw	E				Repair Kits Include the Diaphragm - Not Complete Diaphragm Assembly	
19	3060-2		Bonnet	A thru H					
20	3060-5		Spring Button	A-D, F-H					
	3065-5		Spring Button	E					
21	197-7		Spring	A-D, F, G					

