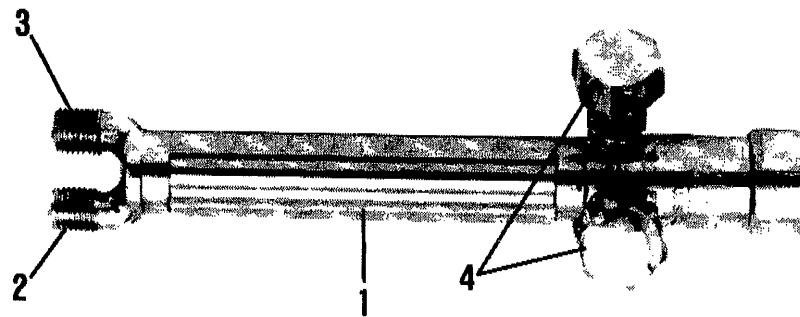


# SMITH/TESCOM

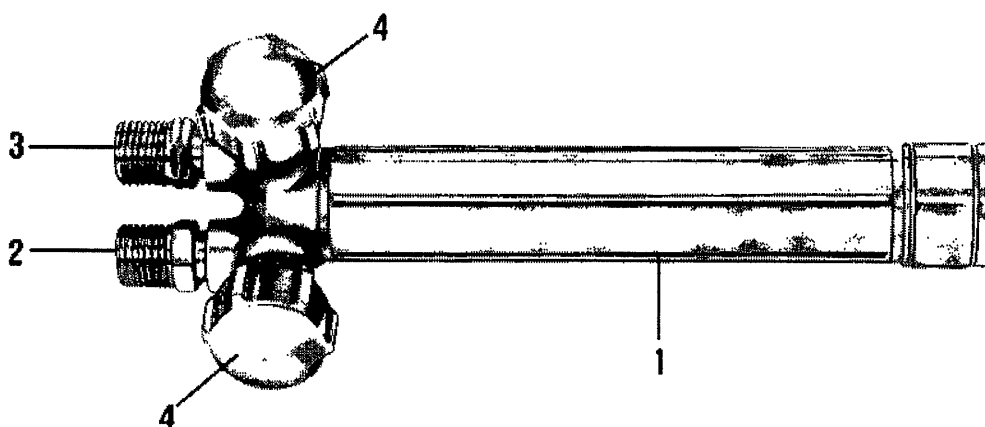
## Model AW 1 Torch Body



REF. NO.	MFG. NO.	S-S NO.	DESCRIPTION	CODE	REF. NO.	MFG. NO.	S-S NO.	DESCRIPTION	CODE
1	AW1		Torch Body						
2	AW1SF		Torch Body Sub-Assembly						
3			Oxygen Inlet (Part of Butt)						
4	AW11	S-025	Fuel Inlet (Part of Butt) Needle Valve (2)						

# SMITH/TESCOM

Models AW10, MW5, SW1, SW1A,  
SW2 & SW 10 Torch Bodies

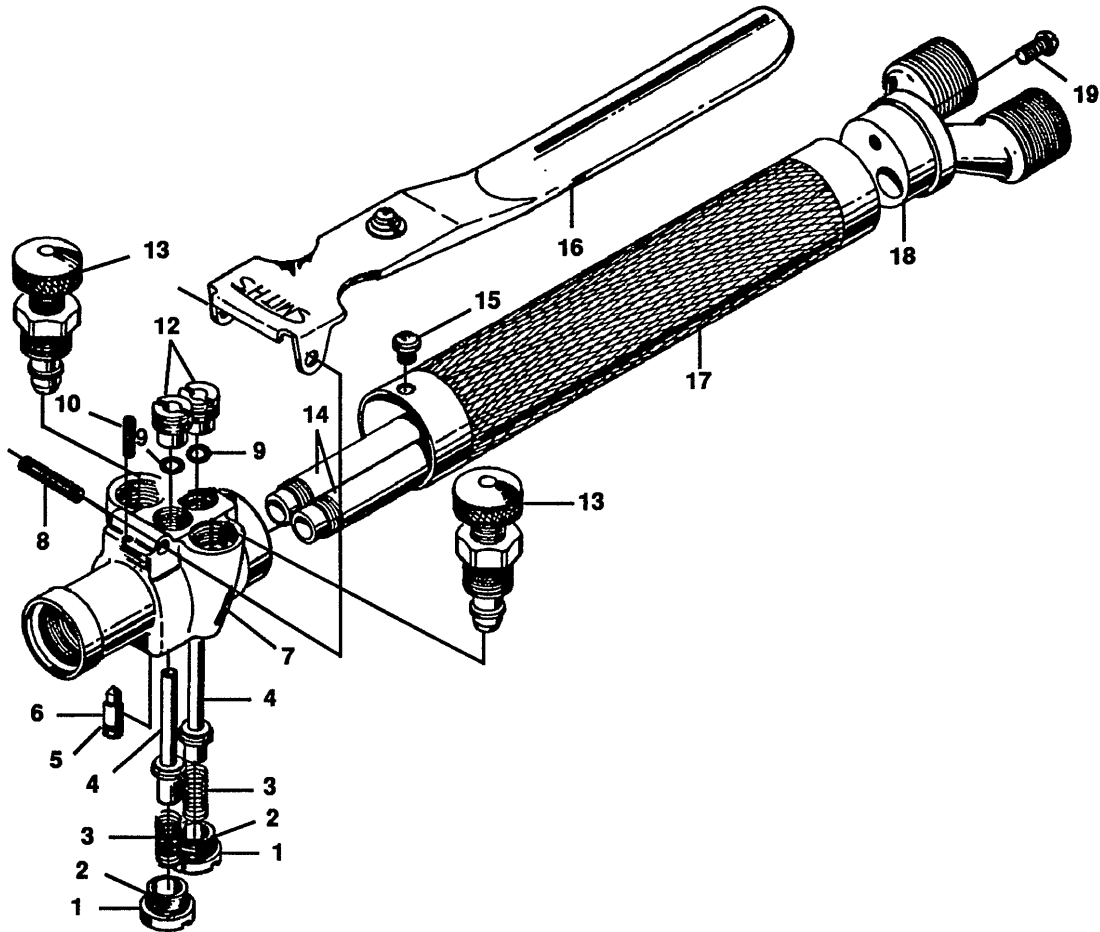


REF. NO.	MFG. NO.	S-S NO.	DESCRIPTION	CODE	REF. NO.	MFG. NO.	S-S NO.	DESCRIPTION	CODE
	AW10		Torch Body	A	4	LW14	S-026	Needle Valve (2)	A, B, C, F
	MW5		Torch Body	B		G729-5	S-107	Needle Valve (2)	D, E
	SW1		Torch Body	C		SW14		Needle Valve (2)	G
	SW1A		Torch Body	D					
	SW10A		Torch Body	E					
	SW2		Torch Body	F					
	SW10		Torch Body	G					
1	AW10SF		Torch Body Sub-Assembly	A					
	MW5SF		Torch Body Sub-Assembly	B					
	SW1SF		Torch Body Sub-Assembly	C					
	SW1ASF		Torch Body Sub-Assembly	D, E					
	SW2SF		Torch Body Sub-Assembly	F					
	SW10SF		Torch Body Sub-Assembly	G					
2			Oxygen Inlet Connection (Part of Butt)	A, B, C, E					
	3060-1		Oxygen Inlet Connection	D, E, G					
3			Fuel Inlet Connection (Part of Butt)	A, B, C, E					
	3060-2		Fuel Inlet Connection	D, E, G					

# SMITH/TESCOM

## Models AW 6 & AW6M

### Lite-O-Matic Torches

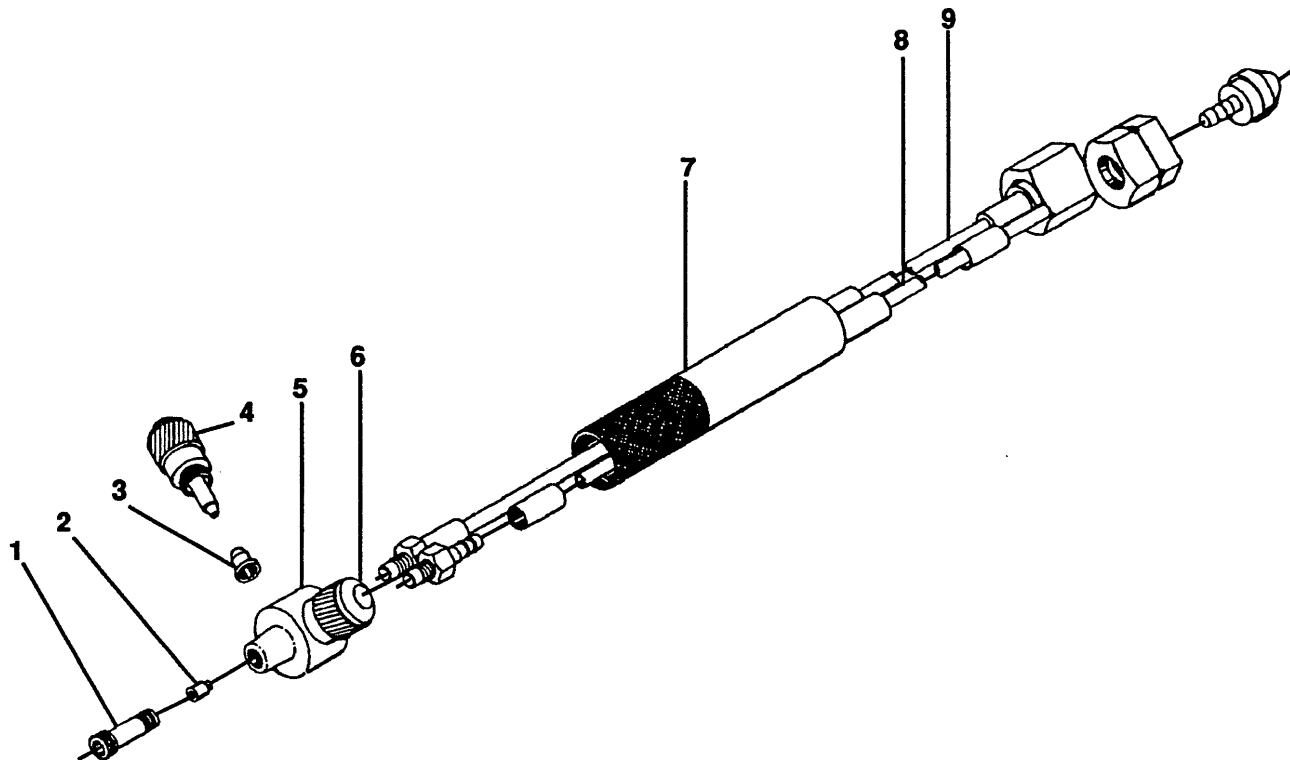


REF. NO.	MFG. NO.	S-S NO.	DESCRIPTION	CODE	REF. NO.	MFG. NO.	S-S NO.	DESCRIPTION	CODE
	AW6		Lite-O-Matic Torch	A	14			Inner Tubes - See Item 11	
	AW6M		Lite-O-Matic Torch	B	15	F1400-31		Locking Screw	A, B
1	F1500-15	S-362	Spring Cap (2)	A, B	16	F1500-11		Lever, Locking Style	A
2	F1500-16		Spring Cap O-Ring (2)	A, B		7766		Lever, Locking Style	B
3	F1500-10		Valve Spring (2)	A, B	17			Handle - See Item 11	
4	F1500-21		Lever Valve Sub-Assy. (2)	A, B	18			Butt - See Item 11	
5	F1500-14		Pilot Valve O-Ring	A, B	19	F1500-33		Screw	A, B
6	F1500-13		Pilot Valve	A					
	7497		Pilot Valve	B					
7			Head - See Item 11						
8	F1500-32		Roll Pin for Lever	A, B					
9	7968		Packing (2)	A, B					
10	F1500-20		Spring, Lever	A, B					
11	AW6SF	Torch Sub-Assembly (Items 6, 9, 10, 13)	A						
	AW6MSF	Torch Sub-Assembly	B13						
12	7969	Packing Nut (2)	A, B						
13	F1500-29	Needle Valve Sub-Assembly (2)	A, B						

# SMITH/TESCOM

Model 11-1101B

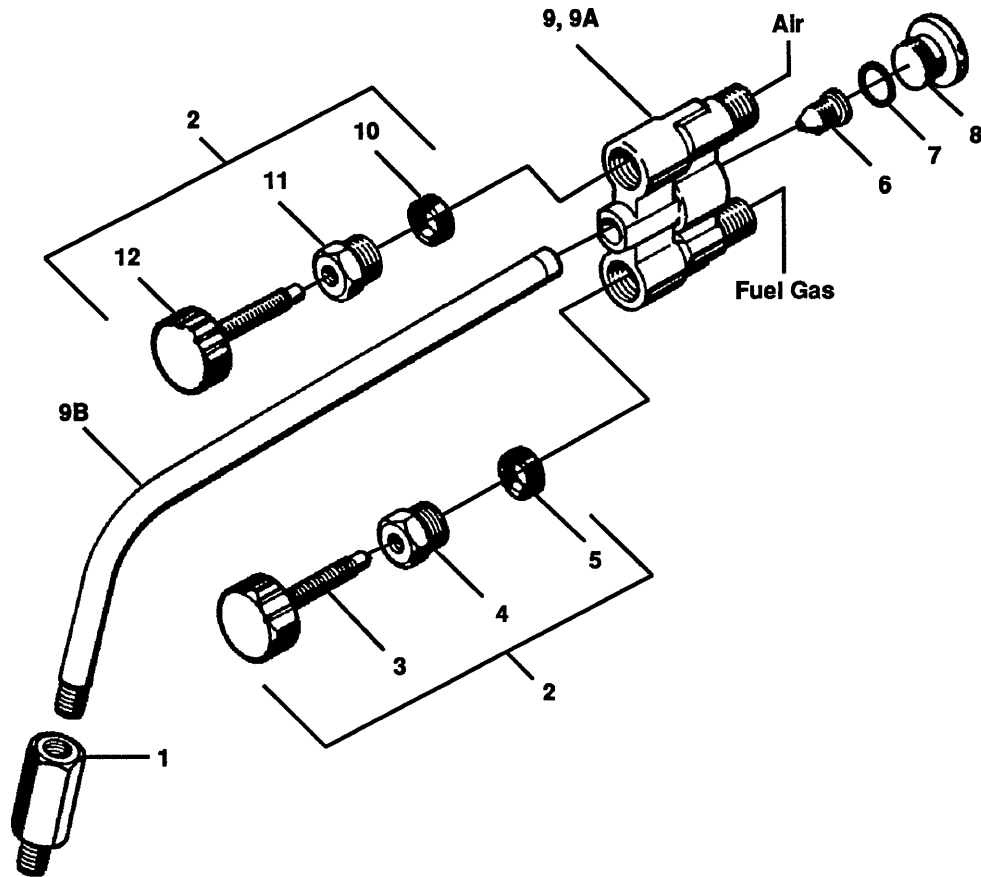
Little Torch



REF. NO.	MFG. NO.	S-S NO.	DESCRIPTION	CODE	REF. NO.	MFG. NO.	S-S NO.	DESCRIPTION	CODE
	11-1101B		Little Torch						
1	1601		Tip Adaptor						
2	1602		Nozzle						
3	7348		Packing						
4	7345		Valve Assembly Oxy. (Green)						
5	7347		Head						
6	7346		Valve Assembly Fuel Gas (Red)						
7	7870		Handle						
8	2105-6		Hose Assembly Fuel Gas (Red)						
9	2106-6		Hose Assembly Oxy. (Green)						

# SMITH/TESCOM

## Model NE120 Gas-Air Torch

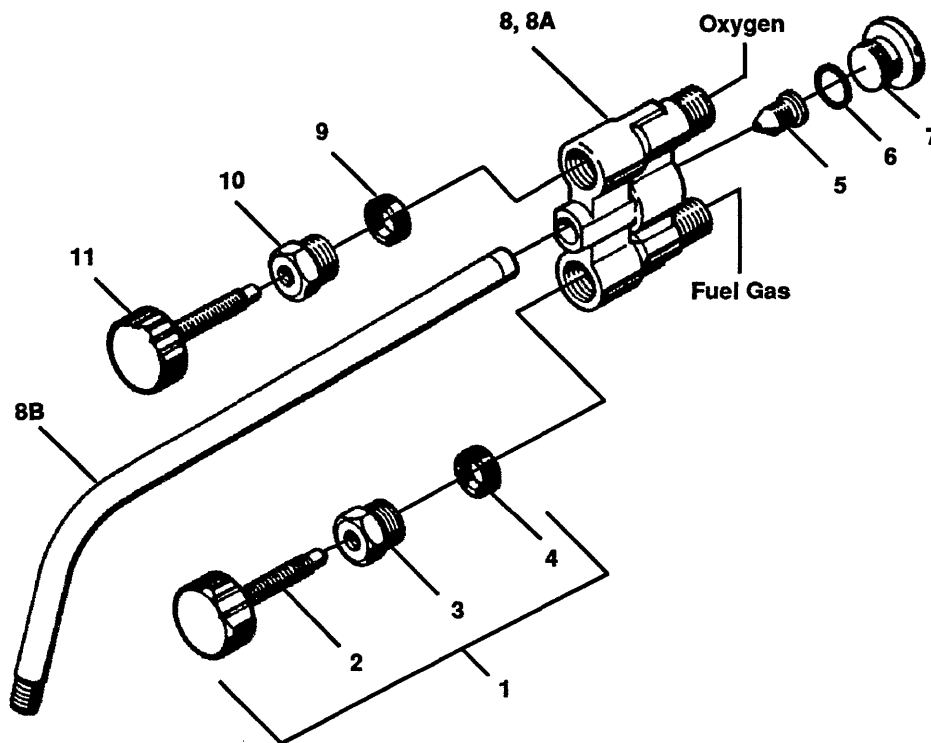


REF. NO.	MFG. NO.	S-S NO.	DESCRIPTION	CODE	REF. NO.	MFG. NO.	S-S NO.	DESCRIPTION	CODE
	NE120		Gas-Air Torch	A	9			None - Torch Sub-Assy. (Butt & Tube)	A
	NE120A		Gas-Air Torch	B				Torch Sub-Assy. (Butt & Tube)	B
	NE120B		Gas-Air Torch	C				Torch Sub-Assy. (Butt & Tube)	C
1			None - Tip Adaptor	A				Torch Butt (Only)	A
	7943		Tip Adaptor	B, C	9A	L216-1		None	B, C
2	12058		Needle Valve Assembly (Oxy. or Fuel)	C	9B	L217-4		Tube (Only)	A
			None	A, B				None	B, C
3	L216-6		Valve Stem (Fuel Side)	A, B	10	G230-40 4676	S-116	Packing (Air Side)	A
			Valve Stem (Fuel Side) - See #12	C				Packing (Air Side)	B
4	L216-3		Nut	A, B	11	G14 L216-3	S-118	None - See item #12	C
			Nut See #12	C				Nut	A
5	4676		Packing (Fuel Side)	A, B				Nut	B
			Packing (Fuel Side) See #12	C	12	G590-21A L216-6	S-168	Nut - See #12	C
6	L223-4 7942		Nozzle	A				Valve Stem (Air Side)	A
			Nozzle	B, C				Valve Stem (Air Side)	B
7	MW-15	S-008	O-Ring	A, B, C				Valve Stem (Air Side) See #12	C
8	L7B		Back Cap	A, B, C					

# SMITH/TESCOM

## Model NE140

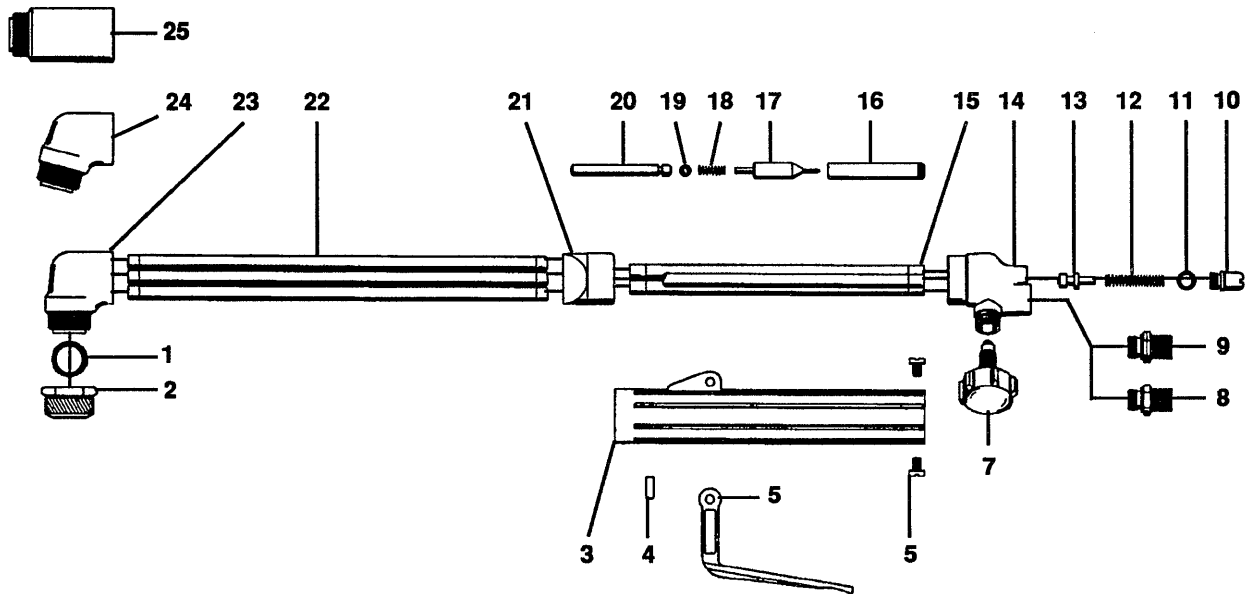
## Gas-Oxygen Torch



REF. NO.	MFG. NO.	S-S NO.	DESCRIPTION	CODE	REF. NO.	MFG. NO.	S-S NO.	DESCRIPTION	CODE
	NE140		Gas-Oxygen Torch	A	8	NE140ASF		Torch Sub-Assembly (Butt & Tube)	B
	NE140A		Gas-Oxygen Torch	B					
	NE140B		Gas-Oxygen Torch	C		NE140BSF		Torch Sub-Assembly (Butt & Tube)	C
1	12058		Needle Valve Assembly	C				None	A
			None	A, B				None	A
2	G590-21A	S-168	Valve Stem (Fuel Side)	A	8A	L8B		Torch Butt (Only)	A
	L216-6		Valve Stem (Fuel Side)	B				None	B, C
			Valve Stem (Fuel Side)	C	8B	L5A		Tube (Only)	A
			See #1					None	B, C
3	G14	S-118	Packing Nut	A	9	G230-40	S-116	Packing (Oxygen Side)	A
	L216-3		Packing Nut	B		4676		Packing (Oxygen Side)	B
			Packing Nut See #1	C				Packing (Oxygen Side)	C
4	G230-40	S-116	Packing (Fuel Side)	A				See #1	
	4676		Packing (Fuel Side)	B	10	G14	S-118	Packing Nut	A
			Packing (Fuel Side) See #1	C		L216-3		Packing Nut	B
5	L3C		Nozzle	A, B, C				Packing Nut See #1	C
6	MW15	S-008	O-Ring	A, B, C	11	G590-21A	S-168	Valve Stem	A
7	L7B		Back Cap	A, B, C		L216-6		Valve Stem	B
								Valve Stem See #1	C

# SMITH/TESCOM

## Models SC175, SC220, SC225, SC 179 & SC229 Silver Star Hand Cutting Torches

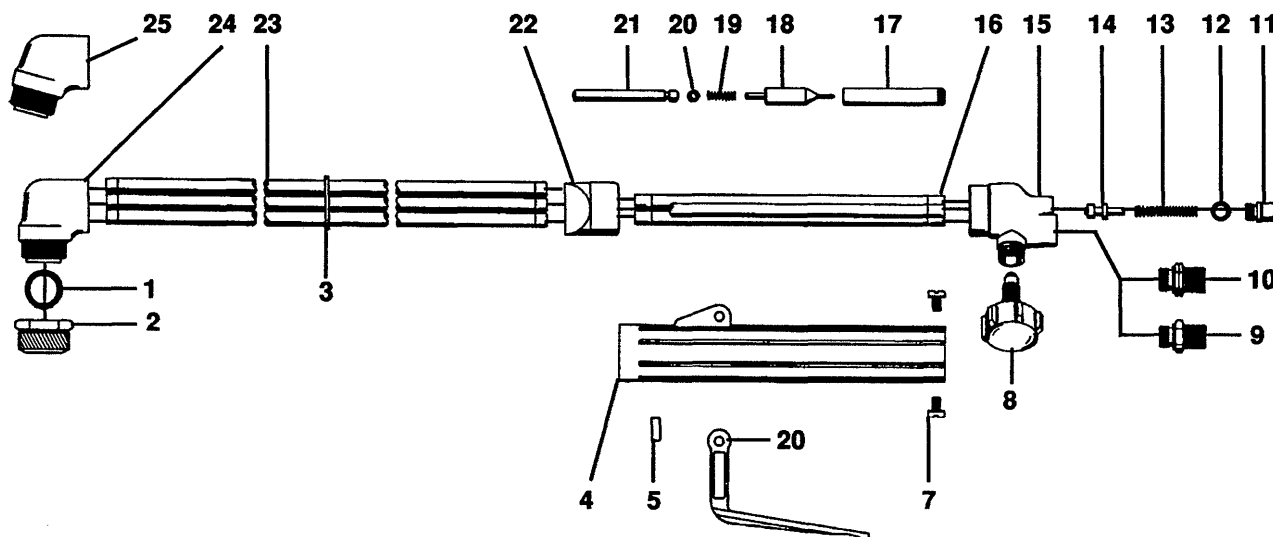


REF. NO.	MFG. NO.	S-S NO.	DESCRIPTION	CODE	REF. NO.	MFG. NO.	S-S NO.	DESCRIPTION	CODE
	SC175		Cutting Torch	A	13	4682		Valve Seat Sub-Assembly	A thru E
	SC179		Cutting Torch	B	14	G900-1A	S-224	Butt	A thru E
	SC220		Cutting Torch	C	15	G900-4A		Back Tube (3)	A thru E
	SC225		Cutting Torch	D	16	G900-26	S-226	Valve Tube	A thru E
	SC229		Cutting Torch	E	17	4683	S-112	Push Rod Point	A thru E
1	1789	S-058	Head O-Ring	A, B	18	F1500-10	S-362	Spring	A thru E
	1780	S-059	Head O-Ring	C	19	2288	S-060	O-Ring	A thru E
	1789	S-058	Head O-Ring	D, E	20	G900-5	S-285	Push Rod	A thru E
2	G900-41A	S-081	Head Nut	A thru E	21	G900-18		Front Piece	A thru E
3	7831		Handle Tube Sub-Assembly	A thru E	22	G900-3A	S-225	Front Tube (3)	A, B
4	7179	S-374	Spirol Pin	A thru E		G900-3	S-325	Front Tube (3)	C, D, E
5	G900-44	S-104	Lever	A thru E	23	G900-2	S-099	Head, 90 Degree	B, E
6	3424	S-390	Handle Screw (2)	A thru E				None	A, C, D
7	LW14	S-026	Valve Stem Sub-Assy. (2)	A thru E	24	G900-40		Head, 75 Degree	A, D
8	3060-1	S-198	Hose Connection (Oxygen)	A thru E				None	B, C, E
9	3060-2	S-199	Hose Connection (Fuel)	A thru E	25	G900-43	S-328	Head, 180 Degree	C
10	G900-27	S-089	Back Cap	A thru E				None	A, B, D, E
11	AW15	S-007	Back Cap O-Ring	A thru E					
12	G900-24	S-121	Valve Seat Spring	A thru E					

# SMITH/TESCOM

Models SC275, SC 365, SC279 & SC369

## Silver Star Hand Cutting Torches

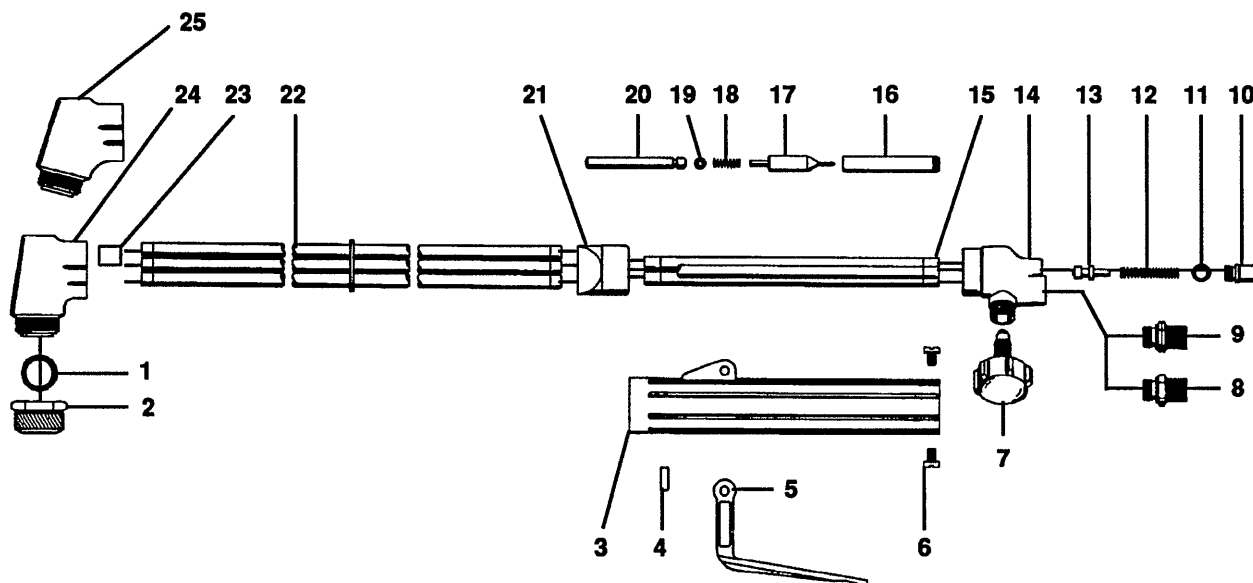


REF. NO.	MFG. NO.	S-S NO.	DESCRIPTION	CODE	REF. NO.	MFG. NO.	S-S NO.	DESCRIPTION	CODE
	SC275		Hand Cutting Torch	A	16	G900-4A		Back Tube (3)	A thru D
	SC279		Hand Cutting Torch	B	17	G900-26	S-226	Valve Tube	A thru D
	SC365		Hand Cutting Torch	C	18	4683	S-112	Push Rod Point	A thru D
	SC369		Hand Cutting Torch	D	19	F1500-10	S-362	Spring	A thru D
1	1789	S-058	Head O-Ring	A thru D	20	2288	S-060	O-Ring	A thru D
2	G900-41A	S-081	Head Nut	A thru D	21	G900-5	S-285	Push Rod	A thru D
3	3086		Tube Support	A thru D	22	G900-18		Front Piece	A thru D
4	7831		Handle Tube Sub-Assembly	A thru D	23	G900-3	S-325	Front Tube (3)	A, B
5	7179	S-374	Spirol Pin	A thru D		G900-3F		Front Tube (3)	C, D
6	G900-44	S-104	Lever	A thru D	24	G900-2	S-099	Head, 90 Degree	B, D
7	3424	S-390	Handle Screw (2)	A thru D				None	A, C
8	LW14	S-026	Valve Stem Sub-Assembly	A thru D	25	G900-40	S-102	Head, 75 Degree	A, C
9	3060-1	S-198	Hose Connection (Oxygen)	A thru D				None	B, D
10	3060-2	S-199	Hose Connection (Fuel)	A thru D					
11	G900-27	S-089	Back Cap	A thru D					
12	AW15	S-007	Back Cap O-Ring	A thru D					
13	G900-24	S-121	Valve Seat Spring	A thru D					
14	4682	S-033.1	Valve Seat Sub-Assembly	A thru D					
15	G900-1A	S-224	Butt	A thru D					

# SMITH/TESCOM

## Models SC225S & SC229S

### Silver Star Hand Cutting Torches

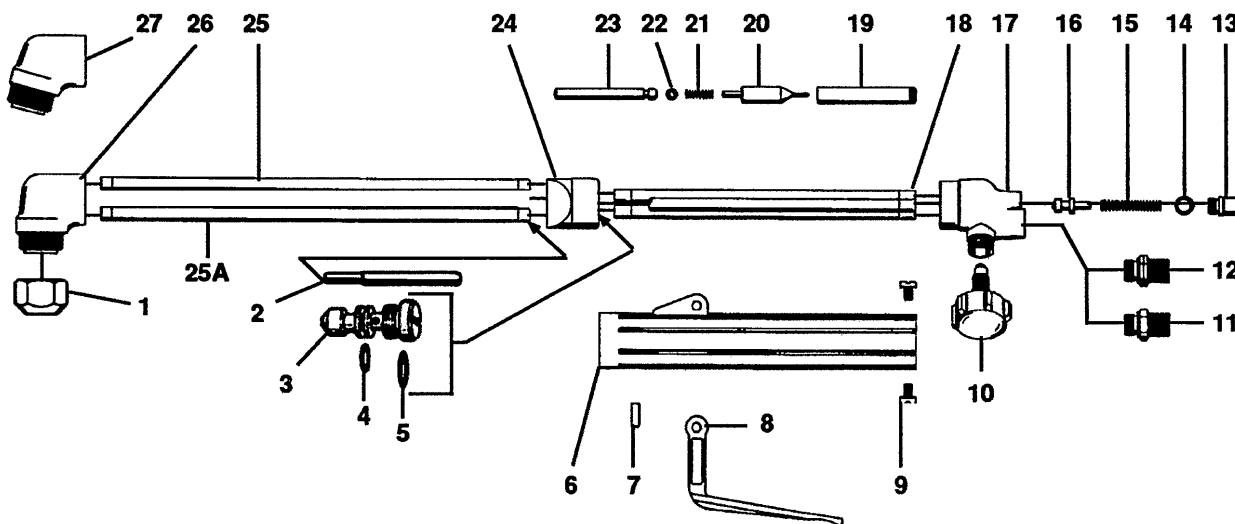


REF. NO.	MFG. NO.	S-S NO.	DESCRIPTION	CODE	REF. NO.	MFG. NO.	S-S NO.	DESCRIPTION	CODE
	SC225S		Hand Cutting Torch	A	18	F1500-10	S-362	Spring	A, B
	SC229S		Hand Cutting Torch	B	19	2288	S-060	O-Ring	A, B
1	1789	S-058	Head O-Ring	A, B	20	G900-5	S-285	Push Rod	A, B
2	G900-41A	S-081	Head Nut	A, B	21	G900-18		Front Piece	A, B
3	7831		Handle Tube Sub-Assembly	A, B	22	G900-3	S-325	Front Tube (3)	A, B
4	7179	S-374	Spirol Pin	A, B	23	1788		Bushing	A, B
5	G900-44	S-104	Lever	A, B	24	G729-29		Head, 90 Degree	B
6	3424	S-390	Handle Screw (2)	A, B				None	A
7	LW14	S-026	Valve Stem Sub-Assembly	A, B	25	G725-1		Head, 75 Degree	A
8	3060-1	S-198	Hose Connection (Oxygen)	A, B				None	B
9	3060-2	S-199	Hose Connection (Fuel)	A, B					
10	G900-27	S-089	Back Cap	A, B					
11	AW15	S-007	Back Cap O-Ring	A, B					
12	4682	S-033.1	Valve Seat Sub-Assembly	A, B					
13	G900-24	S-121	Seat Spring	A, B					
14	G900-1A	S-224	Butt	A, B					
15	G900-4A		Back Tube (3)	A, B					
16	G900-26	S-226	Valve Tube	A, B					
17	4683	S-112	Push Rod Point	A, B					

# SMITH/TESCOM

## Models SC855, SC859, SC865 & SC 869

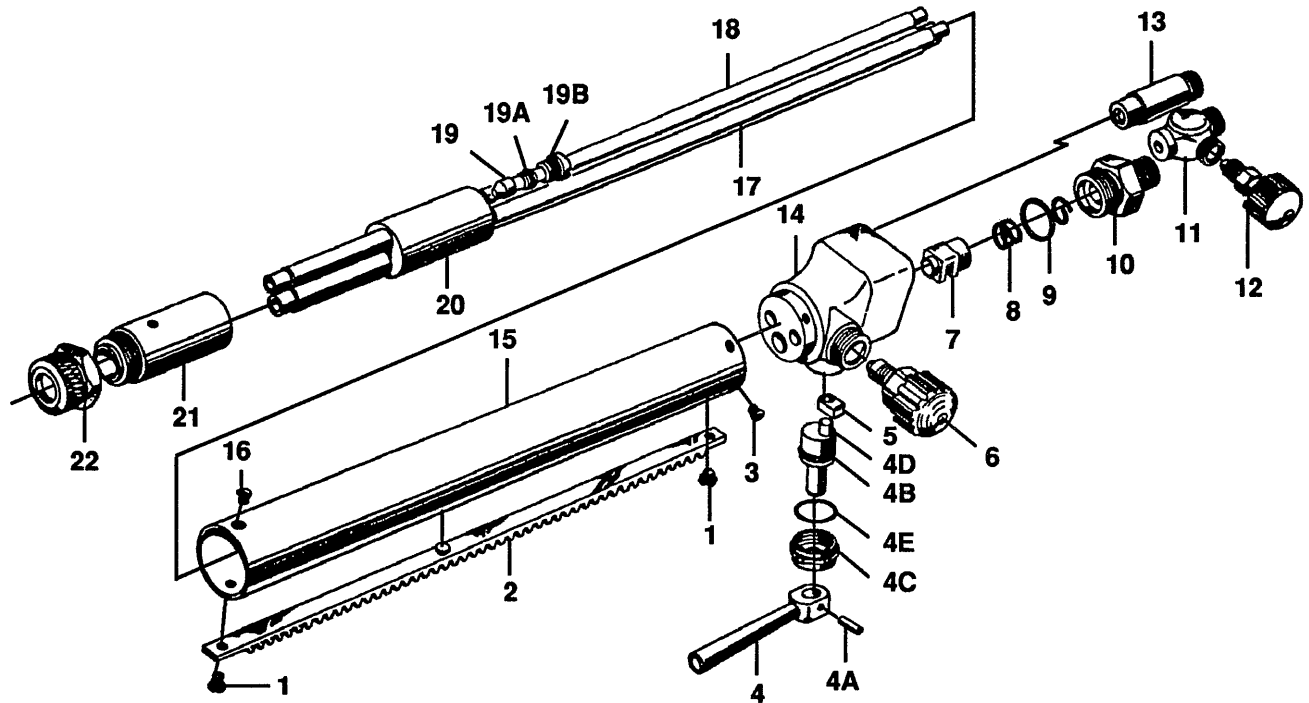
### Universal Hand Cutting Torches



REF. NO.	MFG. NO.	S-S NO.	DESCRIPTION	CODE	REF. NO.	MFG. NO.	S-S NO.	DESCRIPTION	CODE
	SC855		Hand Cutting Torch	A	16	4682	S-033.1	Valve Seat Sub-Assembly	A thru D
	SC859		Hand Cutting Torch	B	17	3007-1		Butt	A thru D
	SC865		Hand Cutting Torch	C	18	3009		Back Fuel Tube	A thru D
	SC869		Hand Cutting Torch	D	18A	3008		Back Oxygen Tube (2)	A thru D
1	7479		Head Nut	A thru D	19	G900-26	S-226	Valve Tube	A thru D
2	3017		Diffuser Tube	A thru D	20	4683	S-112	Push Rod Point	A thru D
3	3018		Mixer	A thru D	21	F1500-10	S-362	Spring	A thru D
4	G790-10		Mixer O-Ring	A thru D	22	2288	S-060	O-Ring	A thru D
5	G790-9	S-093	Mixer O-Ring	A thru D	23	G900-5	S-285	Push Rod	A thru D
6	G900-42	S-227	Handle Tube Sub-Assembly	A thru D	24	3011		Front Piece	A thru D
7	7179	S-374	Spirol Pin	A thru D	25	3012		Cutting Oxygen Tube	A, B
8	G900-44	S-104	Lever	A thru D		3019		Cutting Oxygen Tube	C, D
9	3424	S-390	Handle Screw (2)	A thru D	25A	3013		Preheat Tube	A, B
10	LW14	S-026	Valve Stem Sub-Assy. (2)	A thru D		3020		Preheat Tube	C, D
11	3060-1	S-198	Hose Connection (Oxygen)	A thru D	26	4671		Head, 90 Degree	A thru D
12	3060-2	S-199	Hose Connection (Fuel)	A thru D	27	4673		Head, 75 Degree	A thru D
13	G900-27	S-089	Back Cap	A thru D					
14	AW15	S-007	Back Cap O-Ring	A thru D					
15	G900-24	S-121	Valve Seat Spring	A thru D					

# SMITH/TESCOM

## Models SC890, SC891, SC892, SC895 & SC896 Universal Machine Cutting Torches

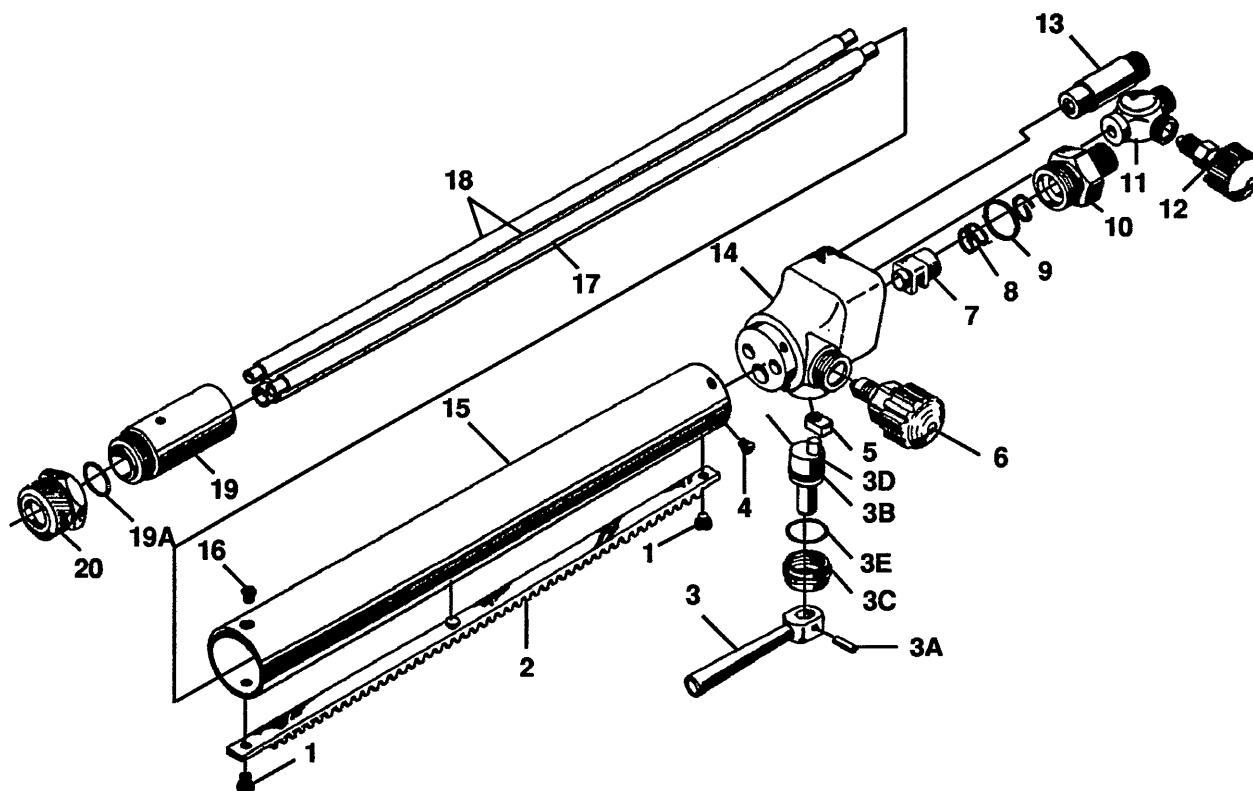


REF. NO.	MFG. NO.	S-S NO.	DESCRIPTION	CODE	REF. NO.	MFG. NO.	S-S NO.	DESCRIPTION	CODE
	SC890		Machine Cutting Torch	A	7	G780-15	S-166	Valve Seat Sub-Assembly	A thru E
	SC891		Machine Cutting Torch	B	8	G780-12	S-113	Valve Spring	A thru E
	SC892		Machine Cutting Torch	C	9	G780-13	S-092	Back Cap O-Ring	A thru E
	SC895		Machine Cutting Torch	D	10	G780-11		Back Cap	A thru E
	SC896		Machine Cutting Torch	E	11	G780-24		Needle Valve Body	A thru E
1	G780-17		Head Rack Screw #6-32 NC x 1/4"	A thru E	12	LW14	S-026	Needle Valve Sub-Assembly	A thru E
	G780-17		Butt Rack Screw #6-32 NC x 1/4	A thru E	13	G780-23		Fuel Connection Tube	A thru E
2	SC780-1		Rack with Screws, 32 Pitch 1/4 x 1/4	A	14	G780-22A		Butt	A thru E
	SC781-1		Rack with Screws, 32 Pitch 1/4 x 1/4	B, D	14A	10513		Nylon Pellet	A thru E
	SC782-1		Rack with Screws, 32 Pitch 1/4 x 1/4	C, E	15	G780-27		Outer tube	A
	SC780-2		Rack with Screws, 24 Pitch 1/4 x 1/4	A		G781-27		Outer Tube	B, D
	SC781-2		Rack with Screws, 24 Pitch 1/4 x 1/4	B, D		G782-27		Outer Tube	C, E
	SC782-2		Rack with Screws, 24 Pitch 1/4 x 1/4	C, E	16	12054		Torch Head Screws #6-32 NC x 1/4" (2)	A thru E
3	12054		Torch Butt Screws Only #6-32 NC x 1/4 (2)	A thru E	17	G780-21		Cutting Oxygen Tube	A
4	G780-6		Lever	A thru E		G781-21		Cutting Oxygen Tube	B, D
4A	G780-7	S-095	Lever Roll Pin Only	A thru E		G782-21		Cutting Oxygen Tube	C, E
4B	2346	S-096	Lever O-Ring Only	A thru E	18	7544-1		Preheat Tube (2)	A
4C	3085		Retaining Nut	A thru E		7544-2		Preheat Tube (2)	B
4D	G780-8		Eccentric Sub-Assembly	A thru E		7544-3		Preheat Tube (2)	C
4E	3301		Eccentric Washer	A thru E		7708-1		Preheat Tube (2)	D
5	G780-14	S-223	Bushing	A thru E		7708-2		Preheat Tube (2)	E
6	G729-5	S-107	Needle Valve Sub-Assembly	A thru E	19	3018		Mixer	A, B, C
						7712		Mixer	D, E
					19A	G790-10		Small O-Ring for Mixer	A thru E
					19B	G790-9	S-093	Large O-Ring for Mixer	A thru E
					20	7543		Injector Body Assembly	A, B, C
						7704		Injector Body Assembly	D, E
					21	7484		Head	A thru E
					22	7479		Head Nut	A thru E

# SMITH/TESCOM

## Models SC780A, SC781A & SC782A

### High Capacity Machine Cutting Torches

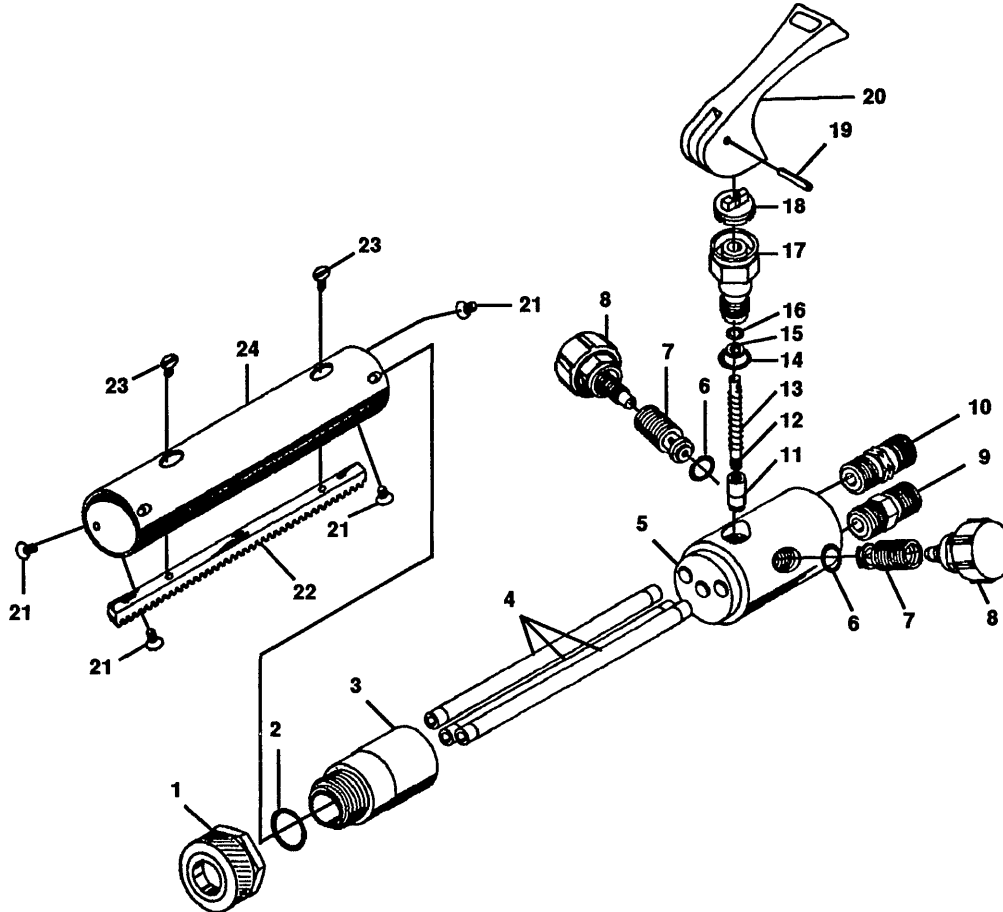


REF. NO.	MFG. NO.	S-S NO.	DESCRIPTION	CODE	REF. NO.	MFG. NO.	S-S NO.	DESCRIPTION	CODE
	SC780A		High Capacity Machine C/T	A	5	G780-14	S-223	Bushing	A, B, C
	SC781A		High Capacity Machine C/T	B	6	G729-5	S-107	Needle Valve Sub-Assembly	A, B, C
	SC782A		High Capacity Machine C/T	C	7	G780-15	S-166	Valve Seat Sub-Assembly	A, B, C
1	G780-17		Rack Screw, #6-32 NC x 1/4" (2)	A, B, C	8	G780-12	S-113	Spring	A, B, C
2	SC780-1		Rack With Screws, 32 Pitch 1/4 x 1/4	A	9	G780-13	S-092	Back-Cap O-Ring	A, B, C
	SC781-1		Rack With Screws, 32 Pitch 1/4 x 1/4	B	10	G780-11		Back Cap	A, B, C
	SC782-1		Rack With Screws, 32 Pitch 1/4 x 1/4	C	11	G780-24		Needle Valve Body	A, B, C
	SC780-2		Rack With Screws, 24 Pitch 1/4 x 1/4	A	12	F430-32		Needle Valve Sub-Assembly	A, B, C
	SC781-2		Rack With Screws, 24 Pitch 1/4 x 1/4	B	13	G780-23		Fuel Connection Hose	A, B, C
	SC782-2		Rack With Screws, 24 Pitch 1/4 x 1/4	C	14	G780-22A		Butt	A, B, C
3	G780-6		Lever	A, B, C	14A	10513		Nylon Pellet	A, B, C
3A	G780-7	S-095	Lever Roll Pin	A, B, C	15	G780-27		Outer Tube	A
3B	2346	S-096	Lever O-Ring	A, B, C		G781-27		Outer Tube	B
3C	3085		Retaining Nut	A, B, C		G782-27		Outer Tube	C
3D	G780-8		Eccentric Sub-Assembly	A, B, C	16	12054		Torch Head Screws #6-32 NC x 1/4" (2)	A, B, C
3E	3301		Eccentric Washer	A, B, C	17	G780-21		Cutting Oxygen Tube	A
4	12054		Torch Butt Screws #6-32 NC x 1/4" (2)	A, B, C		G781-21		Cutting Oxygen Tube	B
						G782-21		Cutting Oxygen Tube	C
					18	G780-20		Preheat Tubes (2)	A
						G781-20		Preheat Tubes (2)	B
						G782-20		Preheat Tubes (2)	C
					19	G780-19	S-284	Head	A, B, C
					19A	1780	S-061	Head O-Ring	A, B, C
					20	G-900-41A	S-081	Head Nut	A, B, C

# SMITH/TESCOM

## Model SC770

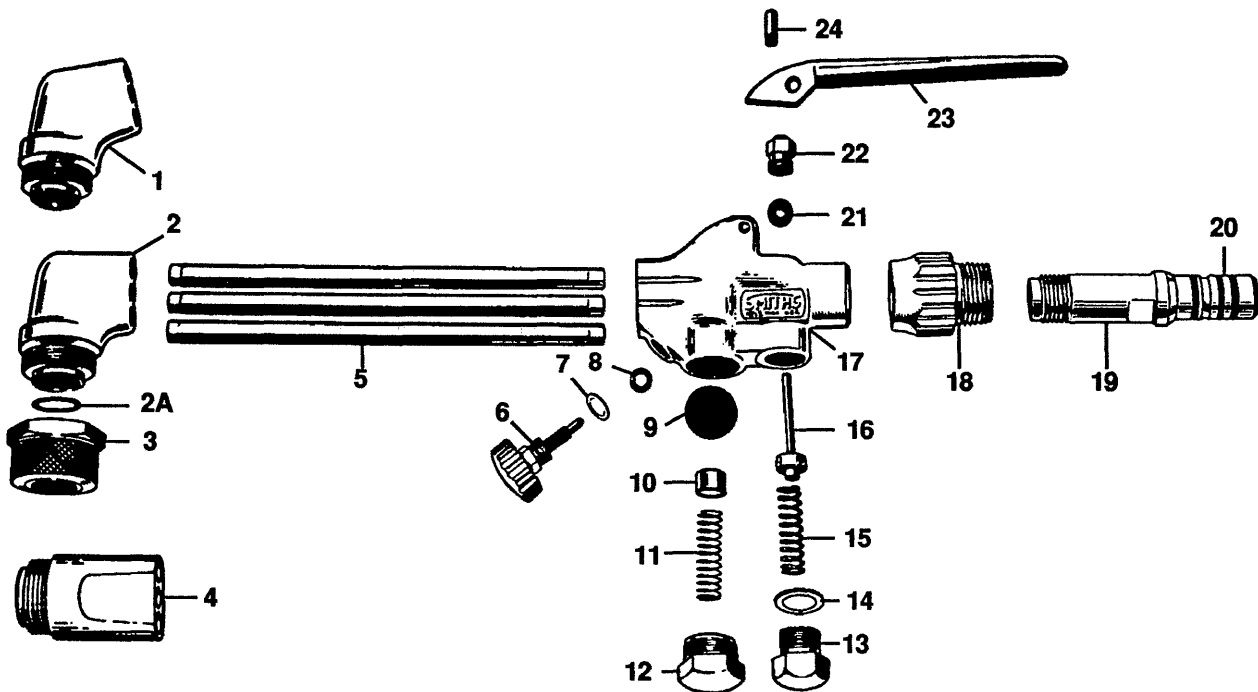
### Machine Cutting Torch



REF. NO.	MFG. NO.	S-S NO.	DESCRIPTION	CODE	REF. NO.	MFG. NO.	S-S NO.	DESCRIPTION	CODE
	SC770		Machine Cutting Torch	A	20	4761		Lever	A, B
	SC771		Machine Cutting Torch	B	21	12054		Screw, 6-32 x 1/4" (4)	A, B
1	G-900-41A	S-081	Head Nut	A, B	22	SC770-1		Gear Rack, 32 Pitch	A
2	1780	S-061	Head, O-Ring	A, B		SC771-1		Gear Rack, 32 Pitch	B
3-5	4764-1		Head, Tube & Butt Sub-Assembly	A		SC770-2		Gear Rack, 24 Pitch	A
	4764-2		Head, Tube & Butt Sub-Assembly	B		SC771-2		Gear Rack, 24 Pitch	B
6	AW15	S-007	O-Ring	A, B	23	4770		Screw, 6-32 x 3/16" (2)	A, B
7	4755		Valve Insert	A, B	24	4762-1		Barrel	A
8	LW14	S-026	Preheat Valve (2)	A, B		4762-2		Barrel	B
9	3060-1	S-198	Hose Connection, Oxygen	A, B					
10	3060-2	S-199	Hose Connection, Fuel	A, B					
11-20	4767		Cutting Oxygen Valve Sub-Assembly	A, B					
11-12	4758		Seat Sub-Assembly	A, B					
13	G440A	S-034	Spring	A, B					
14	G790-9	S-093	O-Ring	A, B					
15	4757		Valve Stem Washer	A, B					
16	4774		O-Ring	A, B					
17	4753		Cutting Valve Nut	A, B					
18	4759		Lever Washer	A, B					
19	4766		Spirol Pin	A, B					

# SMITH/TESCOM

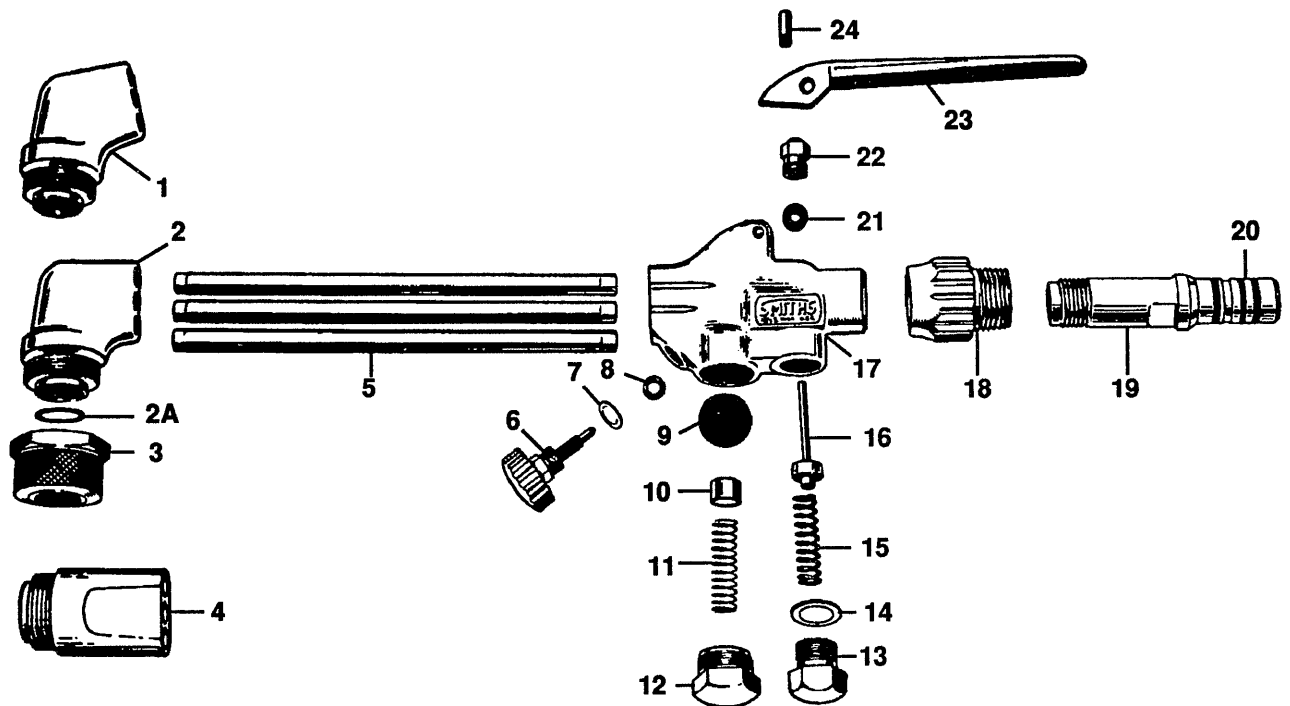
## Models SC200, SC205, SC209, SC505 & SC509 Cutting Assemblies



REF. NO.	MFG. NO.	S-S NO.	DESCRIPTION	CODE	REF. NO.	MFG. NO.	S-S NO.	DESCRIPTION	CODE
	SC200		Cutting Assembly	A	10	4405		Diaphragm Support	A thru E
	SC205		Cutting Assembly	B	11	G230-12	S-036	Diaphragm Spring	A thru E
	SC209		Cutting Assembly	C	12	4406		Diaphragm Cap	A thru E
	SC505		Cutting Assembly	D	13	G230-18	S-119	Spring Retainer	A thru E
	SC509		Cutting Assembly	E	14	7597		Gasket	A thru E
1	G900-40	S-102	Head, 75°	B, D	15	G440A	S-034	Cutting Valve Spring	A thru E
2	G900-2	S-099	Head, 90°	C, E	16	G230-27	S-030	Cutting Valve Stem Sub-Assembly	A thru E
2A	1780	S-061	Head O-Ring	A	17	G245-1		Butt	A thru C
	1789	S-058	Head O-Ring	B thru E		G246-1		Butt	D thru E
3	G900-41A	S-081	Head Nut	A thru E	18	G245-5	S-084	Back End Nut	A thru E
4	G900-43	S-328	Head, 180°	A	19	G245-8	S-085	Back End with 3 Seal Rings	A thru E
5	G900-3A	S-225	Tubes	A thru E	20	LW15	S-009	O-Seal Rings	A thru E
6	7588	S-029	Preheat Valve Stem Sub-Assembly	A thru C	21	G245-6	S-090	Packing	A thru E
	LW14	S-026	Preheat Valve Stem Sub-Assembly	D, E	22	G230-17	S-042	Cutting Valve Packing Nut	A thru E
7	L700-9	S-364	Packing Washer	A thru C	23	G245-2A	S-100	Lever	A thru E
8	G230-40	S-116	Preheat Packing	A thru C	24	7179		Lever Spirol Pin	A thru E
9	G230-13	S-020	Flo-Trol Diaphragm	A thru E					

# SMITH/TESCOM

## Models AC305, AC309, MC409, MC505 & MC509 Cutting Assemblies

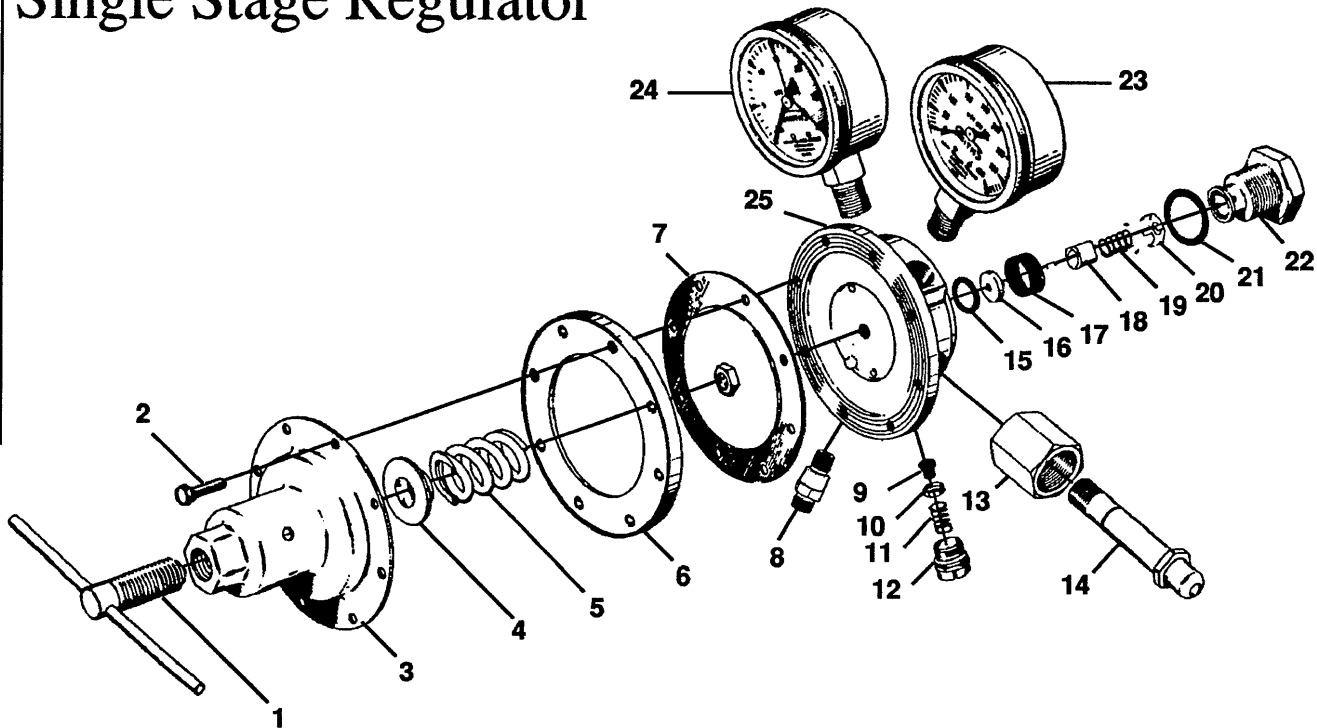


REF. NO.	MFG. NO.	S-S NO.	DESCRIPTION	CODE	REF. NO.	MFG. NO.	S-S NO.	DESCRIPTION	CODE
	AC305		Cutting Assembly	A	10	4403		Diaphragm Support	A thru E
	AC309		Cutting Assembly	B	11	G590-12	S-144	Diaphragm Spring	A thru E
	MC409		Cutting Assembly	C	12	4404		Diaphragm Cap	A thru E
	MC505		Cutting Assembly	D	13	G590-19A	S-220	Spring Retainer	A thru E
	MC509		Cutting Assembly	E	14	7596	S-379	Gasket	A thru E
1	G675-1		Head, 75°	A, D	15	G590-20		Cutting Valve Spring	A thru E
2	G690-2	S-040	Head, 90°	B, C, E	16	G590-28	S-032	Valve Stem Sub-Assy.	A thru E
2A	1790	S-059	Head O-Ring	A, B, D, E	17	G350-1		Butt	A thru B
	1789	S-058	Head O-Ring	C		G690-1	S-322	Butt	C thru E
3	G690-8	S-082	Head Nut	A, B, D, E	18	G340-8	S-022	Back End Nut	A, B
	G900-41A	S-081	Head Nut	C		G590-9		Back End Nut	C thru E
4	None		Head, 180°		19	G340-25A	S-103	Back End with 3 Seal Rings	A, B
5	G679-3		Tubes	A thru C		G690-10	S-079	Back End with 3 Seal Rings	C thru E
	G690-4	S-169	Tubes	D, E	20	AW15	S-007	O-Seal Rings	A, B
6	7588	S-029	Preheat Valve Stem Sub-Assembly	A thru E		MW15	S-008	O-Seal Rings	C thru E
7	L700-9	S-364	Packing Washer	A thru E	21	G245-6	S-090	Packing	A thru E
8	G230-40	S-116	Preheat Packing	A thru E	22	G436	S-219	Cutting Valve Packing Nut	A thru E
9	G590-10	S-021	Flo-Trol Diaphragm	A thru E	23	G690-9	S-049	Lever	A thru E
					24	4709	S-127	Lever Spirol Pin	A thru E

# SMITH/TESCOM

## Model H1500A

### Single Stage Regulator

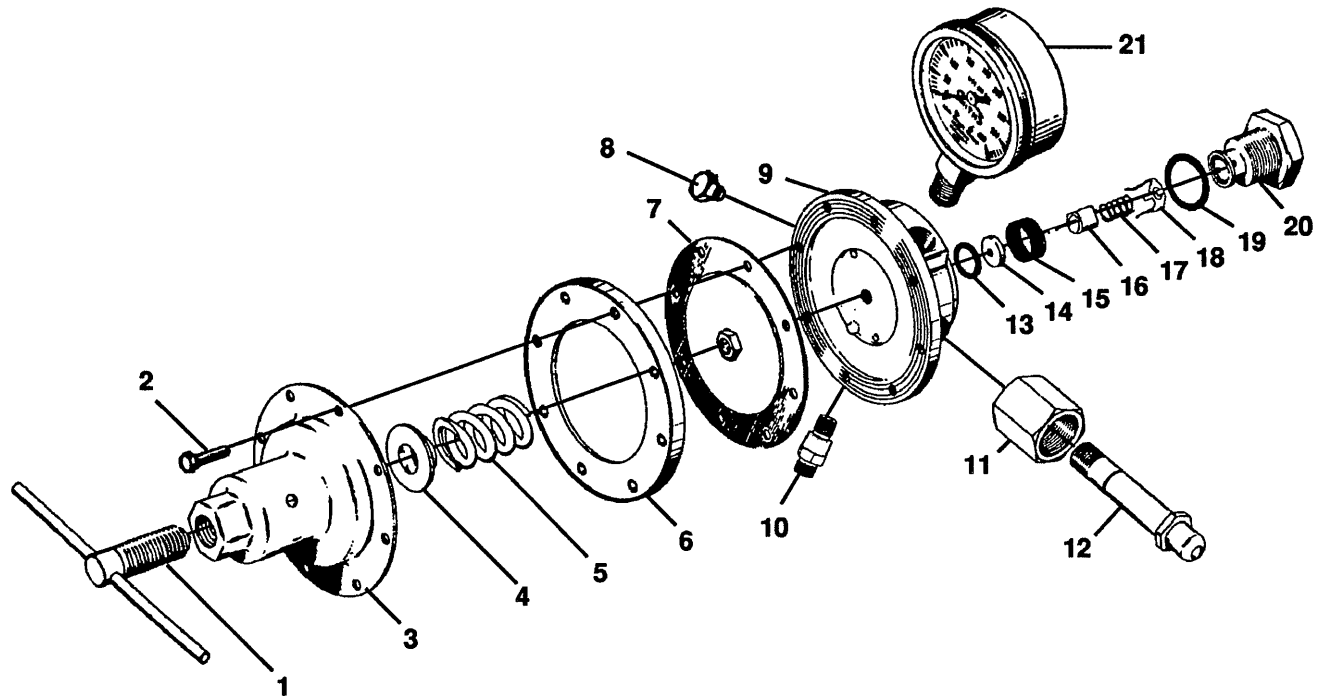


REF. NO.	MFG. NO.	S-S NO.	DESCRIPTION	CODE	REF. NO.	MFG. NO.	S-S NO.	DESCRIPTION	CODE
	H1510A-540		Oxygen Regulator	A	9	1222	S-065	Relief Valve Seat	A, B, F-H
	H1511A-540		Oxygen Regulator	B	10	1221	S-064	Relief Valve Seat Retainer	A, B, F-H
	H1520A-300		Acetylene Regulator	C	11	12075	S-062	Relief Valve Spring	A, G, H
	H1521A-510		Acetylene Regulator	D		1171	S-063	Relief Valve Spring	B, F
	H1522A-510		LP-Gas Regulator	E	12	1248	S-162	Relief Valve Body	A, B, F-H
	H1530A-510		Nitrogen Regulator	F	13	CGA540-1		Inlet Nut	A, B
	H1532A-350		Hydrogen Regulator	G		CGA300-1		Inlet Nut	C, H
	H1533A-320		CO <sub>2</sub> Regulator	H		CGA510-1		Inlet Nut	D, E
1	3397	S-255	Adjusting Screw	A, G, H		CGA580-1		Inlet Nut	F
	4473	S-300	Adjusting Screw	B, F		CGA350-1		Inlet Nut	G
	3396	S-254	Adjusting Screw	C, D, E	14	4497	S-264	Inlet Tailpiece	A, B
2	4600		Bonnet Screws (8)	A thru H		4488	S-301	Inlet Tailpiece	C
3	7923	S-412	Bonnet	A, B		4494	S-302	Inlet Tailpiece	D, E, F
	7922		Bonnet	C, D, E		4492		Inlet Tailpiece	G
	7924		Bonnet	F, H		4490		Inlet Tailpiece	H
	7925		Bonnet	G	15	4451	S-256	Nozzle O-Ring	A, B, E-G
4	3389		Adjusting Spring Button	A, C-E, G, H		4486-1	S-263	Nozzle O-Ring	C, D, H
	4469		Adjusting Spring Button	B, F	16	3387	S-251	Nozzle	A, E-H
5	3352		Adjusting Spring	A, G, H		3388	S-252	Nozzle	B, C, D
	3351		Adjusting Spring	B, F	17	4462	S-260	Filter	A thru H
	3361		Adjusting Spring	C, D	18	4456	S-262	Seat Assembly	A thru H
	3353		Adjusting Spring	E	19	3357	S-244	Seat Spring	A thru H
6	7912		Bonnet Spacer	A thru H	20	4455	S-258	Friction Button	A thru H
7	7907	S-388	Diaphragm Assembly	A thru H	21	4454	S-257	Back Cap O-Ring	A thru H
	3400		Diaphragm Nut		22	4453		Back Cap	A thru H
	3362		Diaphragm Washer		23	H71C		Inlet Gauge	A, B, F-H
	7905	S-372	Diaphragm			H70D		Inlet Gauge	C, D, E
	3399		Diaphragm Button		24	H69B		Outlet Gauge	A, G, H
8	H693		Check Valve/Outlet Connection	A, B		H70D		Outlet Gauge	B, F
	H694		Check Valve/Outlet Connection	C-E, G		H67K		Outlet Gauge	C, D
	H138		Check Valve/Outlet Conn.	F, H		H68P		Outlet Gauge	E
					25	7910		Body	A, B, F-H
						7911		Body	C, D, E

# SMITH/TESCOM

## Model H1500A

### Line Regulator

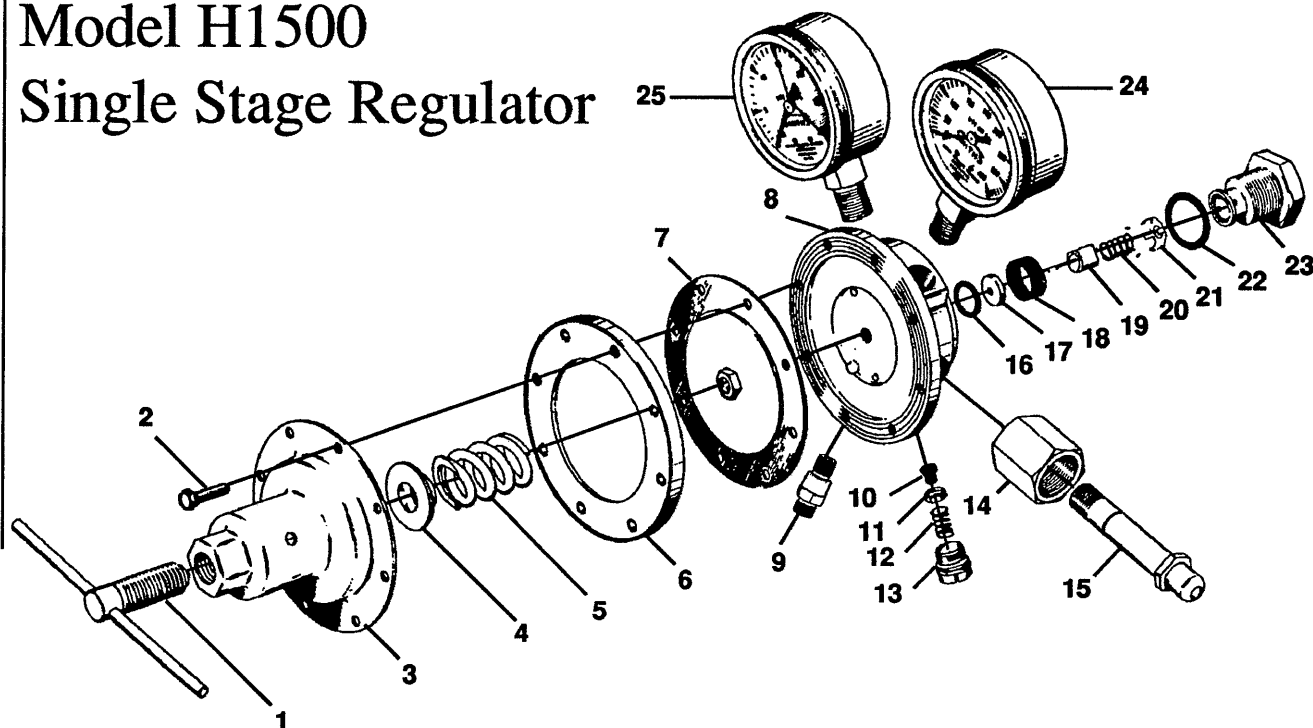


REF. NO.	MFG. NO.	S-S NO.	DESCRIPTION	CODE	REF. NO.	MFG. NO.	S-S NO.	DESCRIPTION	CODE
H1570A			Line Regulator, Oxygen	A	10	H138		Outlet Connection	A-F, L
H1571A-540			Line Regulator, Oxygen	B		H137		Outlet Connection	G-K
H1572A			Line Regulator, Oxygen	C	11	H998-3		Inlet Nut	A, D
H1573A			Line Regulator, Oxygen	D		CGA540-1		Inlet Nut	B, E
H1574A-540			Line Regulator, Oxygen	E		H561		Inlet Nut	C, F, G
H1575A			Line Regulator, Oxygen	F		H46B		Inlet Nut	H
H1576A			Line Regulator, Acetylene	G		H43		Inlet Nut	I
H1577A			Line Regulator, Acetylene	H		3439		Inlet Nut	J, K
H1578A			Line Regulator, Acetylene	I				1/4" NPT, Internal	L
H1579A			Line Regulator, Acetylene	J	12	CGA540-2		Inlet Tailpiece	A, B, D, E
H1580A			Line Regulator, LP Gas	K		H725-1		Inlet Tailpiece	C, F, J, K
H1508A			Line Regulator, Comp. Gas	L		4488	S-301	Inlet Tailpiece	G, H
1	3396	S-254	Adjusting Screw	A-C, G-K		4497	S-264	Inlet Tailpiece	I
	3397	S-255	Adjusting Screw	D-F, L				1/4" NPT, Internal	L
2	4600		Bonnet Screws (8)	A thru L	13	4451	S-256	Nozzle O-Ring	A thru L
3	7923	S-412	Bonnet	A thru F	14	3388	S-252	Nozzle	A thru L
	7922		Bonnet	G thru K	15	4462	S-260	Filter	A thru L
	7924		Bonnet	L	16	4456	S-262	Seat Assembly	A thru L
4	3389		Adjusting Spring Button	A thru L	17	3357	S-244	Seat Spring	A thru L
5	3353		Adjusting Spring	A-C, K	18	4455	S-258	Friction Spring	A thru L
	3352		Adjusting Spring	D-F, L	19	4454	S-257	O-Ring	A thru L
	3361		Adjusting Spring	G thru J	20	4453		Back Cap	A thru L
6	7912		Bonnet Spacer	A thru L	21	H68A		Outlet Gauge	A, B, C
7	7907	S-388	Diaphragm Assembly	A thru L		H70D		Outlet Gauge	D, E, F
7A	3400		Diaphragm Nut			H67K		Outlet Gauge	G-J
7B	3362		Diaphragm Washer			H68P		Outlet Gauge	K
7C	7905	S-372	Diaphragm			H69B		Outlet Gauge	L
7D	3399		Diaphragm Button						
8	H80		Hex Plug	A thru L					
9	7909		Body	A thru L					

# SMITH/TESCOM

## Model H1500

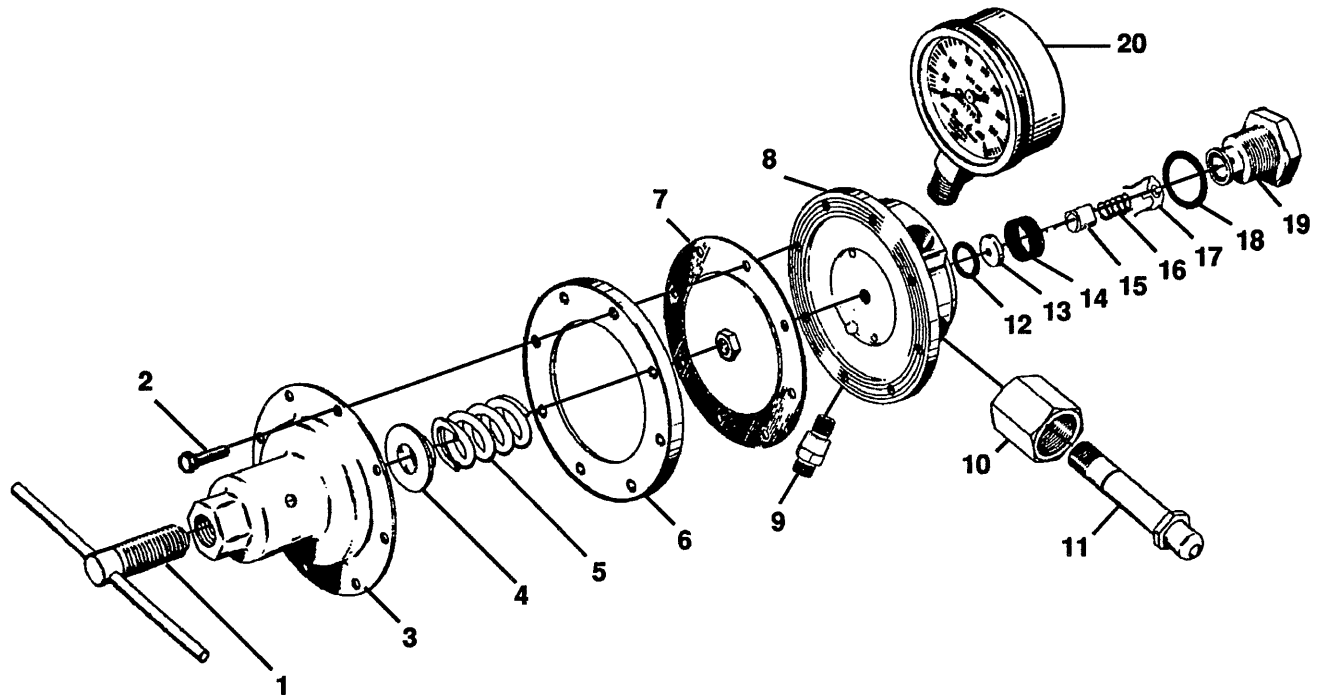
## Single Stage Regulator



REF. NO.	MFG. NO.	S-S NO.	DESCRIPTION	CODE	REF. NO.	MFG. NO.	S-S NO.	DESCRIPTION	CODE
	H1510-540		Single Stage Regulator, O <sub>2</sub>	A		H138		Outlet Connection/	F, H
	H1511-540		Single Stage Regulator, O <sub>2</sub>	B				Check Valve	
	H1520-300		Single Stage Reg., Acety.	C		H137		Outlet Connection/	G
	H1521-510		Single Stage Reg., Acety.	D				Check Valve	
	H1522-510		Single Stage Reg., LP Gas	E	10	1222	S-065	Relief Valve Seat	A, B, F-H
	H1530-580		Single Stage Reg., Nitrogen	F	11	1221	S-064	Relief Valve Seat Retainer	A, B, F-H
	H1532-350		Single Stage Regulator, H <sub>2</sub>	G	12	1170		Relief Valve Spring	A, G, H
	H1533-320		Single Stage Regulator, CO <sub>2</sub>	H	12	1171	S-063	Relief Valve Spring	B, F
1	3397	S-255	Adjusting Screw	A, G, H	13	1248	S-162	Relief Valve Body	A, B, F-H
	4473	S-300	Adjusting Screw	B, F	14	CGA540-1		Inlet Nut	A, B
	3396	S-254	Adjusting Screw	C, D, E		CGA300-1		Inlet Nut	C, H
2	4600		Bonnet Screws (6)	A thru H		CGA510-1		Inlet Nut	D, E
3	3392		Bonnet	A, B		CGA580-1		Inlet Nut	F
	3391		Bonnet	C, D, E		CGA350-1		Inlet Nut	G
	3393		Bonnet	F, H	15	4497	S-264	Inlet Tailpiece	A, B
	7308		Bonnet	G		4488	S-301	Inlet Tailpiece	C
4	3389		Adjusting Spring Button	A, C-E, G, H		4494	S-302	Inlet Tailpiece	D, E, F
	4469		Adjusting Spring Button	B, F		4492		Inlet Tailpiece	G
5	3352		Adjusting Spring	A, G, H	16	4490		Inlet Tailpiece	H
	3351		Adjusting Spring	B, F		4451	S-256	Nozzle O-Ring	A, B, E-G
	3361		Adjusting Spring	C, D		4486-1	S-263	Nozzle O-Ring	C, D
	3353		Adjusting Spring	E		4486		Nozzle O-Ring	H
6	3358		Bonnet Spacer	A thru H	17	3387	S-251	Nozzle	A, B, F-H
7	7311	S-319	Diaphragm Assembly	A-C, F-H		3388	S-252	Nozzle	C, D, E
	4465		Diaphragm Assembly	D, E	18	4462	S-260	Filter	A thru H
			Diaphragm Assembly Consists of:		19	4456	S-262	Seat Assembly	A, B, E, G
	3400		Diaphragm Nut	A thru H		4477		Seat Assembly	C, D, F, H
	3362		Diaphragm Washer	A thru H	20	3357	S-244	Seat Spring	A thru H
	7305	S-245	Diaphragm	A-C, F-H	21	4455	S-258	Friction Spring	A thru H
	3360		Diaphragm	D, E	22	4454	S-257	Back Cap O-Ring	A thru H
	3399		Diaphragm Button	A thru H	23	4453		Back Cap	A thru H
8	3363		Body	A, B, F-H	24	H71C		Inlet Gauge	A, B, F-H
	4463		Body	C, D, E		H70D		Inlet Gauge	C, D, E
9	H693		Outlet Connection/	A, B	25	H69B		Outlet Gauge	A, G, H
			Check Valve			H70D		Outlet Gauge	B, F
	H694		Outlet Connection/	C, D, E		H67K		Outlet Gauge	C, D
			Check Valve			H68P		Outlet Gauge	E

# SMITH/TESCOM

## Model H1500 Line Regulator

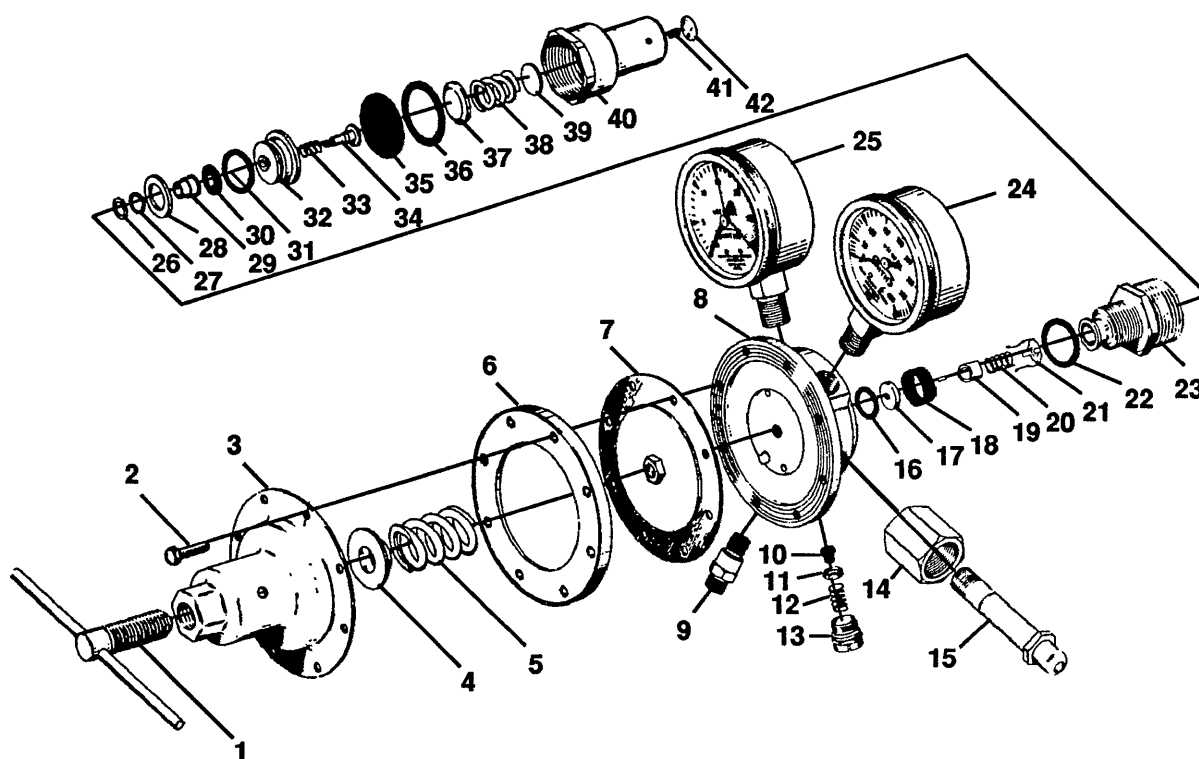


REF. NO.	MFG. NO.	S-S NO.	DESCRIPTION	CODE	REF. NO.	MFG. NO.	S-S NO.	DESCRIPTION	CODE
	H1570		Line Regulator, Oxygen	A	8	4481		Body	A thru L
	H1571-540		Line Regulator, Oxygen	B	9	H138		Outlet Connection	A-F, L
	H1572		Line Regulator, Oxygen	C		H137		Outlet Connection	G-K
	H1573		Line Regulator, Oxygen	D	10	H998-3		Inlet Nut	A, D
	H1574-540		Line Regulator, Oxygen	E		CGA540-1		Inlet Nut	B, E
	H1575		Line Regulator, Oxygen	F		H561		Inlet Nut	C, F, G
	H1576		Line Regulator, Acetylene	G		H46B		Inlet Nut	H
	H1577		Line Regulator, Acetylene	H		H43		Inlet Nut	I
	H1578		Line Regulator, Acetylene	I		3439		Inlet Nut	J, K
	H1579		Line Regulator, Acetylene	J				1/4" NPT, Internal	L
	H1580		Line Regulator, LP Gas	K	11	CGA540-2		Inlet Tailpiece	A, B, D, E
	H1508		Line Regulator, Comp. Air	L		H725-1		Inlet Tailpiece	C, F, J, K
1	3396	S-254	Adjusting Screw	A-C, G-K		4488	S-301	Inlet Tailpiece	G, H
	3397	S-255	Adjusting Screw	D-F, L		4497	S-264	Inlet Tailpiece	I
2	4600		Bonnet Screw (6)	A thru L				1/4" NPT, Internal	L
3	3392		Bonnet	A thru F	12	4451	S-256	Nozzle O-Ring	A thru L
	3391		Bonnet	G-K	13	3388	S-252	Nozzle	A thru L
	3393		Bonnet	L	14	4462	S-260	Filter	A thru L
4	3389		Adjusting Spring Button	A thru L	15	4456	S-262	Seat Assembly	A thru L
5	3353		Adjusting Spring	A-C, K	16	3357	S-244	Seat Spring	A thru L
	3352		Adjusting Spring	D-F, L	17	4455	S-258	Friction Spring	A thru L
	3361		Adjusting Spring	G-J	18	4454	S-257	Back Cap O-Ring	A thru L
6	3358		Bonnet Spacer	A thru L	19	4453		Back Cap	A thru L
7	7311	S-319	Diaphragm Assembly	A thru L	20	H68A		Outlet Gauge	A, B, C
			Diaphragm Assembly Consists of:			H70D		Outlet Gauge	D, E, F
	3400		Diaphragm Nut			H67K		Outlet Gauge	G-J
	3362		Diaphragm Washer			H68P		Outlet Gauge	K
	7305	S-245	Diaphragm			H69B		Outlet Gauge	L
	3399		Diaphragm Button						

# SMITH/TESCOM

## Model H1600A

### Two-Stage Regulator



# SMITH/TESCOM

## Model H1600A

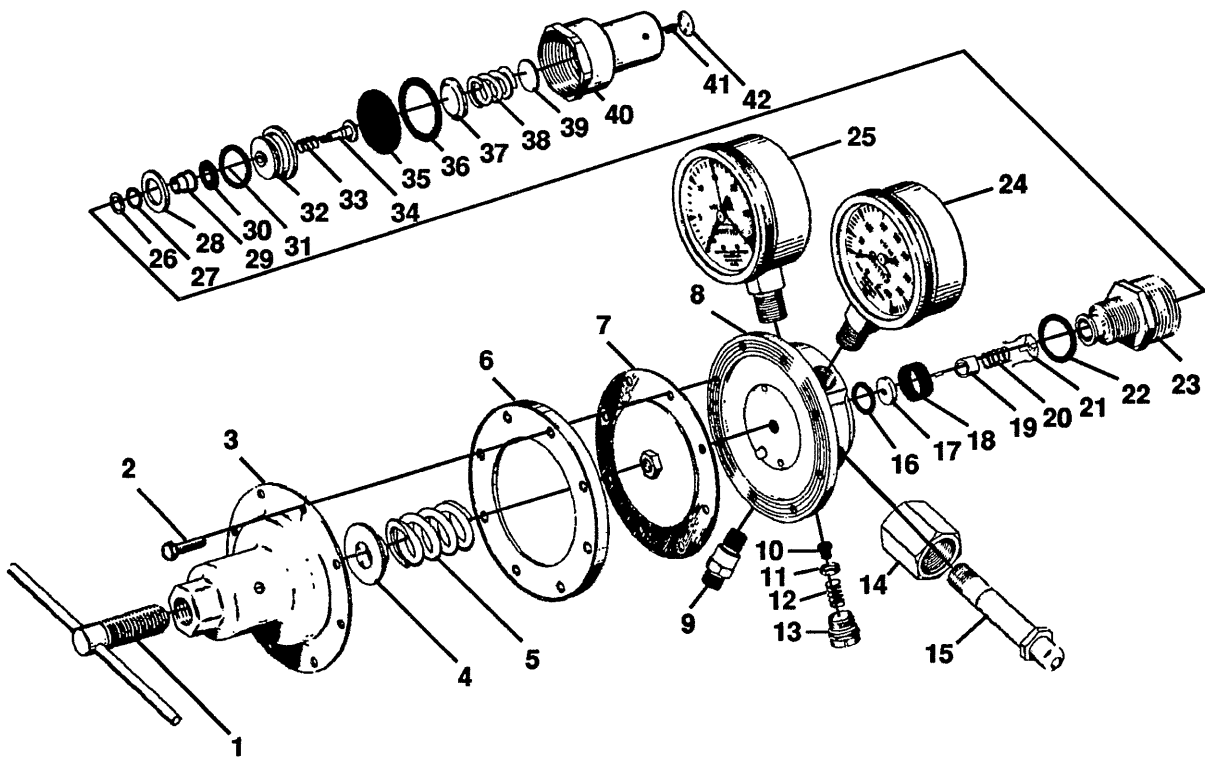
### Two-Stage Regulator

REF. NO.	MFG. NO.	S-S NO.	DESCRIPTION	CODE	REF. NO.	MFG. NO.	S-S NO.	DESCRIPTION	CODE
	H1610A-540		Two Stage, O <sub>2</sub> Regulator	A	17	3388	S-252	Nozzle	A thru E
	H1611A-540		Two Stage, O <sub>2</sub> Regulator	B	18	4462	S-260	Filter	A thru E
	H1620A-300		Two Stage, Acety. Reg.	C	19	4456	S-262	Seat Assembly	A thru E
	H1621A-510		Two Stage, Acety. Reg.	D	20	3357	S-244	Seat Spring	A thru E
	H1622A-510		Two Stage, Fuel Gas Reg.	E	21	4455	S-258	Friction Spring	A thru E
1	3397	S-255	Adjusting Screw	A	22	4454	S-257	Back Cap O-Ring	A thru E
	4473	S-300	Adjusting Screw	B	23	3375		1st. Stage Body	A thru E
	3396		Adjusting Screw	C, D, E	24	H71C		Inlet Gauge	A, B
2	4600		Bonnet Screws (8)	A thru E		H70D		Inlet Gauge	C, D, E
3	7923	S-412	Bonnet	A, B	25	H69B		Outlet Gauge	A
	7922		Bonnet	C, D, E		H70D		Outlet Gauge	B
4	3389		Adjusting Spring Button	A, C, D, E		H67K		Outlet Gauge	C, D
	4469		Adjusting Spring Button	B		H68P		Outlet Gauge	E
5	3352		Spring, Adjusting	A	26	3368	S-296	O-Ring Back-Up Washer	A thru E
	3351		Spring, Adjusting	B	27	3369	S-297	O-Ring 1/16" x 3/8" x 1/2"	A, B, E
	3361		Spring, Adjusting	C, D		3372	S-248	O-Ring 1/16" x 3/8" x 1/2"	C, D
	3353		Spring, Adjusting	E	28	3376		Seat Retainer Ring	A thru E
6	7912		Bonnet Spacer	A thru E	29	3367	S-295	Nozzle	A thru E
7	7907	S-388	Diaphragm Assembly	A thru E	30	3370	S-246	Seat	A, B, E
			Diaphragm Assembly Consists of:			3370-A	S-247	Seat	C, D
	3400		Diaphragm Nut		31	H713-30	S-172	O-Ring 1/8" x 3/4" x 1"	A thru E
	3362		Diaphragm Washer		32	3373		Seat Retainer Block	A thru E
	7905	S-372	Diaphragm		33	4476		Seat Spring	A thru E
	3399		Diaphragm Button		34	3371	S-346	Stem	A thru E
8	7912		Body	A	35	7306	S-250	Diaphragm	A, B, C
	7910		Body	B		3378		Diaphragm	D, E
	7911		Body	C, D, E	36	3377	S-249	Diaphragm Washer	A thru E
9	H693		Check Valve	A, B	37	3379		Diaphragm Button	A thru E
	H694		Check Valve	C, D, E	38	3355		Adjusting Spring	A, B
10	1222	S-065	Relief Valve Seat	A, B		3356		Adjusting Spring	C, D, E
11	1221	S-064	Relief Valve Seat Retainer	A, B	39	3380		Spring Button	A thru E
12	12075	S-062	Relief Valve Spring	A	40	3381		Bonnet	A thru E
	1171	S-063	Relief Valve Spring	B	41	3382		1st. Stage Adjusting Screw	A thru E
13	1248	S-162	Relief Valve Body	A	42	4467-2		1st. Stage Cover	A, B
	1280		Relief Valve Body	B		4467-1		1st. Stage Cover	C, D
14	CGA540-1		Inlet Nut	A, B		4467-3		1st. Stage Cover	E
	CGA300-1		Inlet Nut	C		H1601		Complete 1st Stage Assy.	A, B
	CGA510-1		Inlet Nut	D, E				(Includes items 11 thru 18 and 26 thru 42)	
* 15	4497	S-264	Inlet Tailpiece	A, B				Complete 1st. Stage Assy.	C, D
* 16	4488	S-301	Inlet Tailpiece	C		H1602		(Includes items 11 thru 18 and 26 thru 42)	
* 17	4494	S-302	Inlet Tailpiece	D, E		H1603		Complete 1st. Stage Assy.	E
			* Tailpiece Includes H713-23 Filter and L607 Retaining Ring					(Includes items 11 thru 18 and 26 thru 42)	
16	4451	S-256	Nozzle O-Ring	A, B, E					
	4486-1	S-263	Nozzle O-Ring	C, D					

# SMITH/TESCOM

## Model H1600

### Two-Stage Regulator





**SEAL-SEAT**

# SMITH/TESCOM

## Model H1600

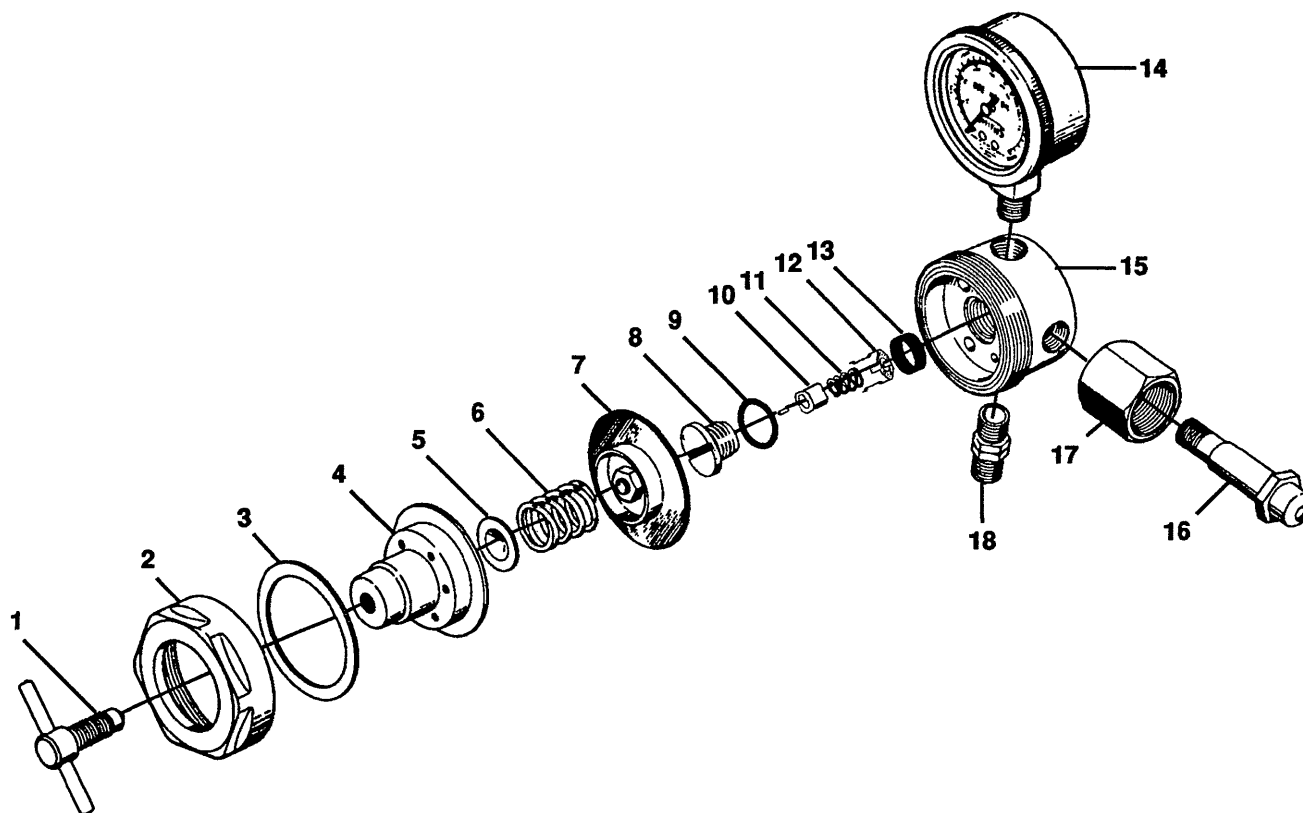
### Two-Stage Regulator

REF. NO.	MFG. NO.	S-S NO.	DESCRIPTION	CODE	REF. NO.	MFG. NO.	S-S NO.	DESCRIPTION	CODE
	H1610-540		Two Stage, O <sub>2</sub> Regulator	A		4486-1	S-263	Nozzle O-Ring	C, D
	H1611-540		Two Stage., O <sub>2</sub> Regulator	B	17	3388	S-252	Nozzle	A thru E
	H1620-300		Two Stage, Acety. Reg.	C	18	4462	S-260	Filter	A thru E
	H1621-510		Two Stage, Acety. Reg.	D	19	4456	S-262	Seat Assembly	A thru E
	H1622-510		Two Stage, LP Gas	E	20	3357	S-244	Seat Spring	A thru E
1	3397	S-255	Adjusting Screw	A	21	4455	S-258	Friction Washer	A thru E
	4473	S-300	Adjusting Screw	B	22	4454	S-257	O-Ring	A thru E
	3396	S-254	Adjusting Screw	C, D, E	23	3376		1st Stage Body	A thru E
2	4600		Bonnet Screws (6)	A thru E	24	H71C		Inlet Gauge	A, B
3	3392		Bonnet	A, B		H70D		Inlet Gauge	C, D, E
	3391		Bonnet	C, D, E	25	H698		Outlet Gauge	A
4	3389		Adjusting Spring Button	A, C, D, E		H70D		Outlet Gauge	B
	4469		Adjusting Spring Button	B		H67K		Outlet Gauge	C, D
5	3352		Spring, Adjusting	A		H68P		Outlet Gauge	E
	3351		Spring, Adjusting	B	26	3368	S-296	O-Ring Back Up Washer	A thru E
	3361		Spring, Adjusting	C, D	27	3369	S-297	O-Ring 1/16" x 3/8" x 1/2"	A, B, E
	3353		Spring, Adjusting	E		3372	S-248	O-Ring 1/16 x 3/8" x 1/2"	C, D
6	3358		Bonnet Spacer	A thru E	28	3376		Seat Retainer Ring	A thru E
7	7311	S-319	Diaphragm Assembly	A, B, C	29	3367	S-295	Nozzle	A thru E
	4465		Diaphragm Assembly	D, E	30	3370	S-246	Seat	A, B, E
			Diaphragm Assembly Consists of:			3370-A	S-247	Seat	C, D
	3400		Diaphragm Nut	A thru E	31	H713-30	S-013	O-Ring 1/8" x 3/4" x 1"	A thru E
	3362		Diaphragm Washer	A thru E	32	3373		Seat Retainer Block	A thru E
	7305	S-245	Diaphragm	A, B, C	33	4476		Seat Spring	A thru E
	3360		Diaphragm	D, E	34	3371	S-346	Stem	A thru E
	3399		Diaphragm, Bottom	A thru E	35	7306	S-250	Diaphragm	A, B, C
8	3363		Body	A, B		3378		Diaphragm	D, E
	4463		Body	C, D, E	36	3377	S-249	Diaphragm Washer	A thru E
9	H693		Outlet Connection/ Check Valve	A, B	37	3379		Diaphragm Button	A thru E
	H694		Outlet Connection/ Check Valve	C, D, E	38	3355		Adjusting Spring	A, B
						3356		Adjusting Spring	C, D, E
10	1222	S-065	Relief Valve Seat	A, B	39	3380		Spring Button	A thru E
11	1221	S-064	Relief Valve Seat Retainer	A, B	40	3381		Bonnet	A thru E
12	1170		Relief Valve Spring	A	41	3382		1st. Stage Adjusting Screw	A thru E
	1171	S-063	Relief Valve Spring	B	42	4467-2		1st. Stage Cover	A, B
13	1248	S-162	Relief Valve Body	A, B		4467-1		1st. Stage Cover	C, D
14	CGA540-1		Inlet Nut	A, B		4467-3		1st. Stage Cover	E
	CGA300-1		Inlet Nut	C		H1601		Complete 1st Stage Assy.	A, B
	CGA510-1		Inlet Nut	D, E				(Includes items 11 thru 18 and 26 thru 42)	
* 15	4497	S-264	Inlet Tailpiece	A, B		H1602		Complete 1st. Stage Assy.	C, D
*	4438		Inlet Tailpiece	C				(Includes items 11 thru 18 and 26 thru 42)	
*	4494	S-302	Inlet Tailpiece	D, E		H1603		Complete 1st. Stage Assy.	E
			* Tailpiece Includes H713-23 Filter and L607 Retaining Ring					(Includes items 11 thru 18 and 26 thru 42)	
16	4451	S-256	Nozzle O-Ring	A, B, E					

# SMITH/TESCOM

## Model H1700A

### Line Regulator

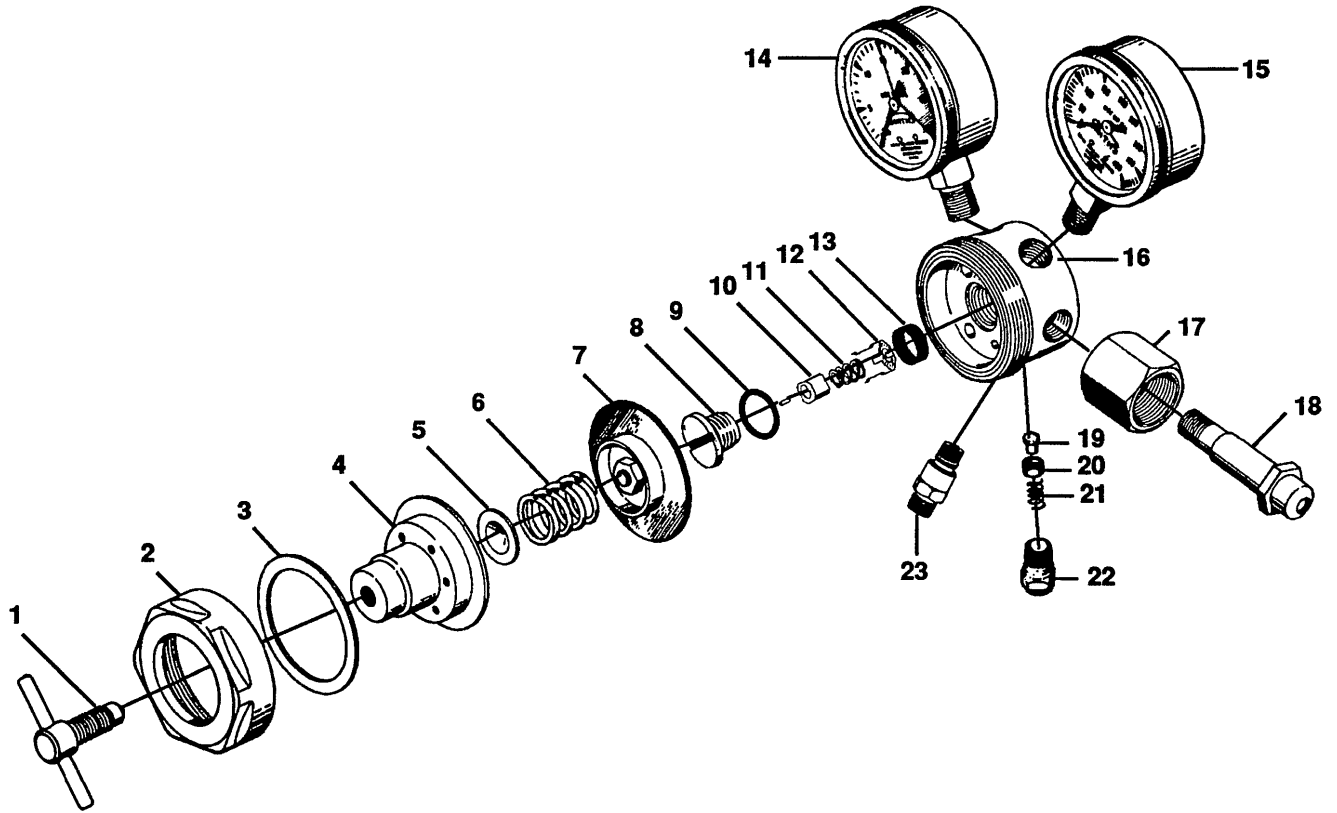


REF. NO.	MFG. NO.	S-S NO.	DESCRIPTION	CODE	REF. NO.	MFG. NO.	S-S NO.	DESCRIPTION	CODE
	H1708		Line Regulator, Air	A	14	H68N		Outlet Pressure Gauge	A, B, C
	H1774-540		Line Regulator, Oxygen	B		H67N		Outlet Pressure Gauge	D, E, F
	H1775		Line Regulator, Oxygen	C	15	4566		Body	A
	H1777		Line Regulator, Fuel	D		4565		Body	B thru F
	H1778		Line Regulator, Fuel	E	16	CGA540-2		Inlet Tailpiece	B, E
	H1779		Line Regulator, Fuel	F		H725-1		Inlet Tailpiece	C, F
1	7714	S-317	Adjusting Screw Assembly	A thru F		CGA300-2		Inlet Tailpiece	D
2	H1100-5		Bonnet Ring	A thru F	17	CGA540-1		Inlet Nut	B
3	H713-6	S-056	Bonnet Washer	A thru F		H561		Inlet Nut	C
4	1980		Bonnet Sub-Assembly	A		H46B		Inlet Nut	D
	H713-4	S-236	Bonnet Sub-Assembly	B, C		H43		Inlet Nut	E
	H715-4		Bonnet Sub-Assembly	D, E, F		3439		Inlet Nut	F
5	H713-21		Spring Button	A thru F	18	H138		Outlet Connection	A, B, C
6	H713-20	S-172	Adjusting Spring	A, B, C		H137		Outlet Connection	D, E, F
	H715-3		Adjusting Spring	D, E, F					
7	H713-16A	S-057	Diaphragm Sub-Assembly	A thru F					
8	12024	S-383	Nozzle	A thru F					
9	4562	S-215	Nozzle O-Ring	A thru F					
10	12022	S-216	Seat Sub-Assembly	A thru F					
11	3357	S-244	Seat Spring	A thru F					
12	4455	S-258	Friction Spring	A thru F					
13	4553	S-266	Screen Filter	A thru F					

# SMITH/TESCOM

## Model H1700A

### Cylinder Regulator



REF. NO.	MFG. NO.	S-S NO.	DESCRIPTION	CODE	REF. NO.	MFG. NO.	S-S NO.	DESCRIPTION	CODE
	H1710A-540		Cylinder Reg., Oxygen	A	14	H68N		Outlet Pressure Gauge	A
	H1720A-300		Cylinder Reg., Acetylene	B		H67N		Outlet Pressure Gauge	B, C, E
	H1721A-510		Cylinder Reg., Acety. or MAPP	C		H69C		Outlet Pressure Gauge	D
	H1722A-510		Cylinder Reg., Propane	D	15	H71N		Inlet Pressure Gauge	A
	H1726A-520		Cylinder Regulator	E		H70N		Inlet Pressure Gauge	B thru E
1	7714	S-317	Adjusting Screw Assembly	A thru E	16	4564		Regulator Body	A
2	H1100-5		Bonnet Ring	A thru E		4567		Regulator Body	B thru E
3	H713-6	S-056	Bonnet Washer	A thru E	17	CGA540-1		Inlet Nut	A
4	H713-4	S-236	Bonnet Sub-Assembly	A		CGA300-1		Inlet Nut	B
	H715-4		Bonnet Sub-Assembly	B thru E		7316		Inlet Nut	C, D
5	H713-21		Spring Button	A thru E		H54		Inlet Nut	E
6	H713-20	S-172	Adjusting Spring	A	18	CGA540-2		Inlet Tailpiece	A
	H715-3		Adjusting Spring	B, C, E		CGA300-2		Inlet Tailpiece	B
	4422		Adjusting Spring	D		CGA510-1		Inlet Tailpiece	C, D
7	H713-16A	S-057	Diaphragm Sub-Assembly	A thru E		H53		Inlet Tailpiece	E
8	12023	S-382	Nozzle	A	19	1222	S-065	Seat	A
	12024	S-383	Nozzle	B thru E	20	1221	S-064	Seat Retainer	A
9	4562	S-215	Nozzle O-Ring	A thru E	21	12075	S-062	Spring	A
10	12022	S-216	Seat Sub-Assembly	A thru E	22	1248	S-162	Relief Valve Body	A
11	3357	S-244	Seat Spring	A thru E	23	H693		Check Valve	A
12	4455	S-258	Friction Spring	A thru E		H694		Check Valve	B thru E
13	4553	S-266	Screen Filter	A thru E					















